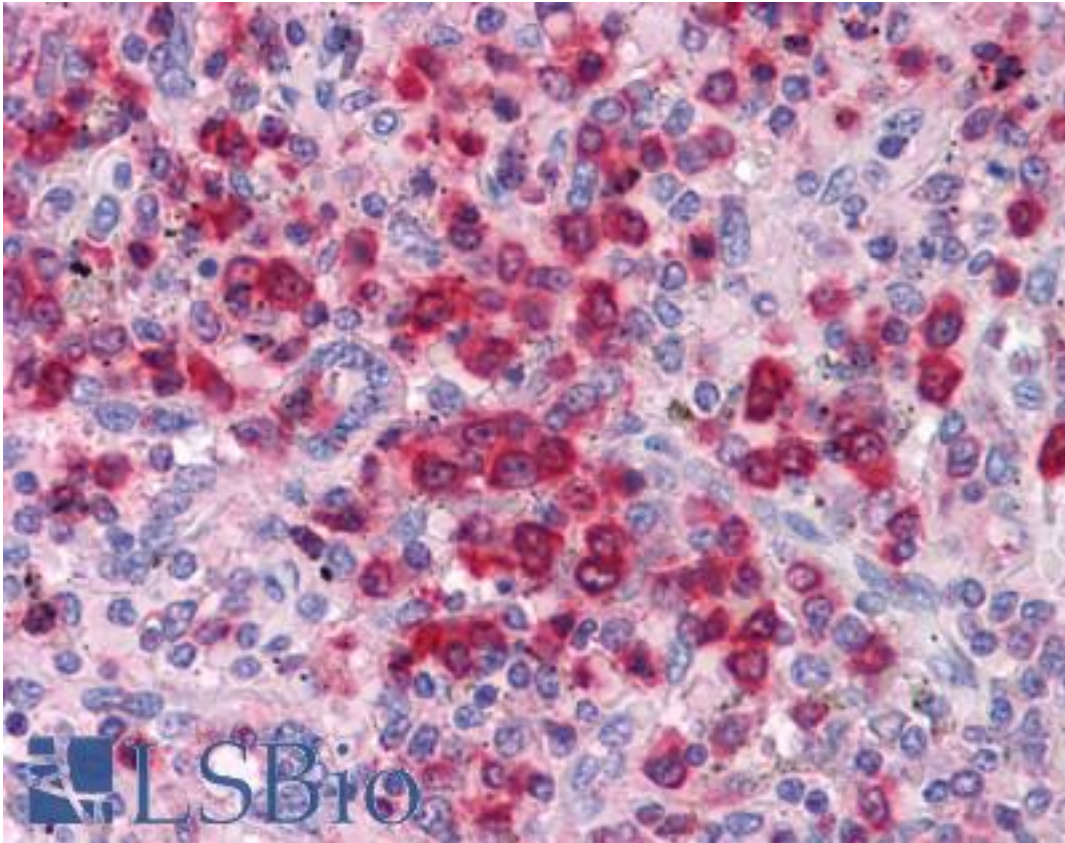


HNE / Neutrophil Elastase Sheep anti-Human Polyclonal Antibody - LS-B4244 - LSBio	
CatalogID:	LS-B4244
Validation:	This antibody replaces catalog number LS-C23010. It has been validated for use in the following assays: IHC-Fr.
Target:	elastase, neutrophil expressed (ELANE)
Synonyms:	ELANE Antibody, Bone marrow serine protease Antibody, ELA2 Antibody, Elastase 2, neutrophil Antibody, Elastase-2 Antibody, HLE Antibody, Medullasin Antibody, Granulocyte-derived elastase Antibody, Neutrophil elastase Antibody, NE Antibody, Human leukocyte elastase Antibody, PMN elastase Antibody, PMN-E Antibody, SCN1 Antibody, Polymorphonuclear elastase Antibody, Elastase, neutrophil expressed Antibody, GE Antibody, Leukocyte elastase Antibody, Lysosomal elastase Antibody
Family / Subfamily:	Protease / Serine S1
Host	ELANE antibody was produced in Sheep
Clonality:	Polyclonal
Isotype:	IgG
Immunogen Species:	HNE / Neutrophil Elastase antibody was raised against Human
Antigen Type:	Purified protein
Immunogen:	HNE / Neutrophil Elastase antibody was raised against neutrophil elastase (active-site blocked) prepared from human sputum.
Specificity:	Specific for elastase.
Reactivity:	Human
Purification:	Immunoaffinity purified
Presentation:	10 mM HEPES, pH 7.4, 0.15 M sodium chloride, 50% glycerol.
Recommended Storage:	Short term 4°C, long term aliquot and store at -20°C, avoid freeze thaw cycles.
Usage Summary:	Suitable for use in ELISA, IHC with FFPE tissues and Immunoelectrophoresis.
Uses:	IHC - Paraffin (5 µg/ml), ELISA, Immunoelectrophoresis (Optimal dilution to be determined by the researcher)
Size:	50 µg
Concentration:	1 mg/ml

Immunohistochemistry Image:



Anti-ELANE / Neutrophil Elastase antibody IHC of human spleen. Immunohistochemistry of formalin-fixed, paraffin-embedded tissue after heat-induced antigen retrieval. Antibody LS-B4244 concentration 5 ug/ml.

Requested From:

Japan

Laboratory Reagent For In Vitro Research Use Only

Not for resale without prior written consent from LifeSpan BioSciences, Inc.

Created on 9/23/2014

© 2014 LifeSpan BioSciences