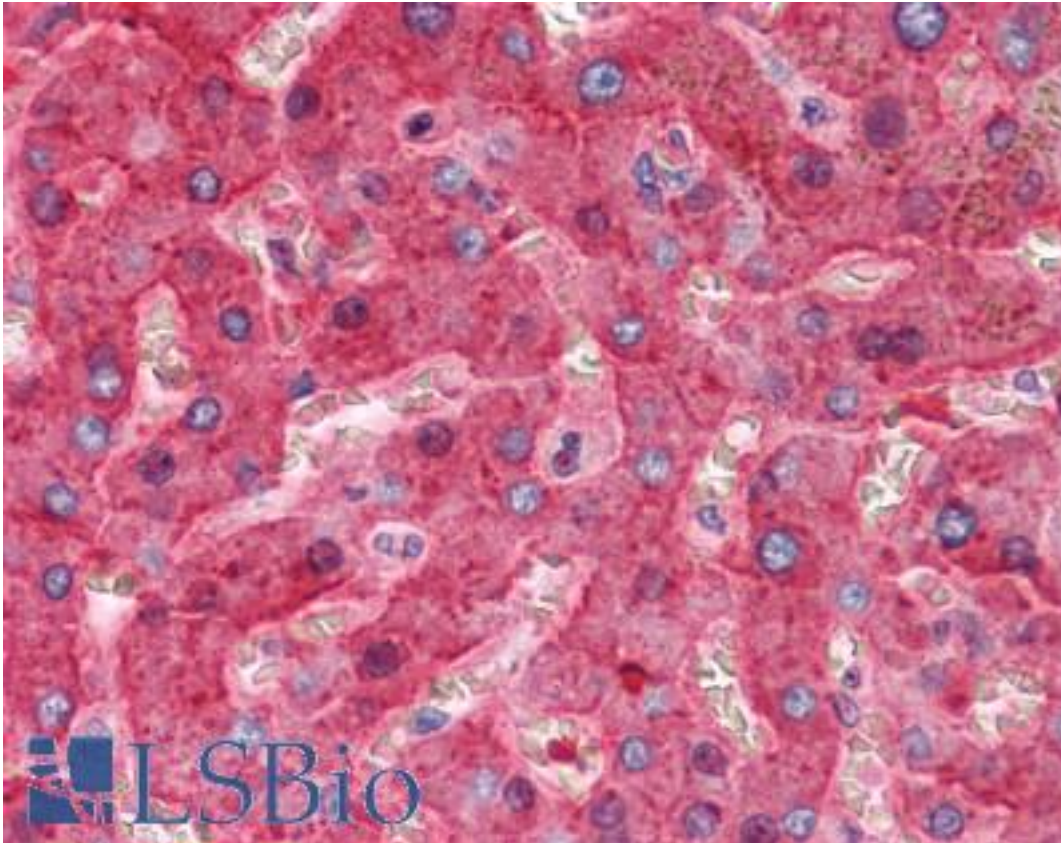


SERPING1 / C1 Inhibitor Goat anti-Human Polyclonal Antibody - LS-B4241 - LSBio

<b>CatalogID:</b>	LS-B4241
<b>Validation:</b>	This antibody replaces catalog number LS-C12188. It has been validated for use in the following assays: IHC-P.
<b>Target:</b>	serpin peptidase inhibitor, clade G (C1 inhibitor), member 1 (SERPING1)
<b>Synonyms:</b>	SERPING1 Antibody, C1-inhibiting factor Antibody, C1IN Antibody, C1 Inh Antibody, C1-INH Antibody, C1INH Antibody, C1NH Antibody, C1 Inhibitor Antibody, HAE1 Antibody, HAE2 Antibody, Plasma protease C1 inhibitor Antibody, C1 esterase inhibitor Antibody, Serpin G1 Antibody
<b>Host</b>	SERPING1 antibody was produced in Goat
<b>Clonality:</b>	Polyclonal
<b>Isotype:</b>	IgG
<b>Immunogen Species:</b>	SERPING1 / C1 Inhibitor antibody was raised against Human
<b>Antigen Type:</b>	Purified protein
<b>Immunogen:</b>	SERPING1 / C1 Inhibitor antibody was raised against c1 esterase Inhibitor (also called C1-Inactivator) purified from human plasma.
<b>Specificity:</b>	Recognizes human C1 esterase inhibitor.
<b>Reactivity:</b>	Human
<b>Purification:</b>	Immunoaffinity purified
<b>Presentation:</b>	0.01 M HEPES, pH 7.4, 0.15 M sodium chloride, 50% glycerol.
<b>Recommended Storage:</b>	Short term 4°C, long term aliquot and store at -20°C, avoid freeze thaw cycles.
<b>Usage Summary:</b>	Suitable for use in ELISA, IHC with FFPE tissues and Immunoelectrophoresis.
<b>Uses:</b>	IHC - Paraffin (5 µg/ml), ELISA, Immunoelectrophoresis (Optimal dilution to be determined by the researcher)
<b>Size:</b>	250 µg

**Immunohistochemistry Image:**



Anti-SERPING1 / C1INH antibody IHC of human liver. Immunohistochemistry of formalin-fixed, paraffin-embedded tissue after heat-induced antigen retrieval. Antibody LS-B4241 concentration 5 ug/ml.

**Requested From:**

Japan

Laboratory Reagent For In Vitro Research Use Only

Not for resale without prior written consent from LifeSpan BioSciences, Inc.

Created on 9/23/2014

© 2014 LifeSpan BioSciences