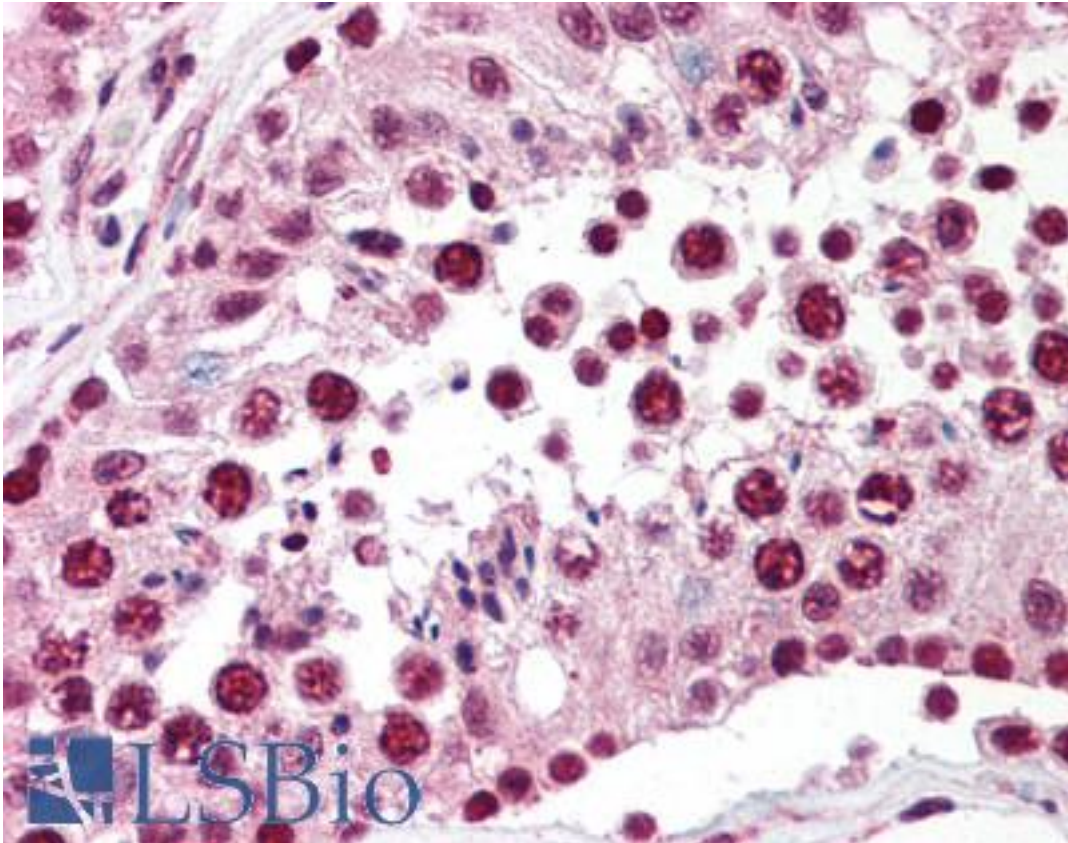


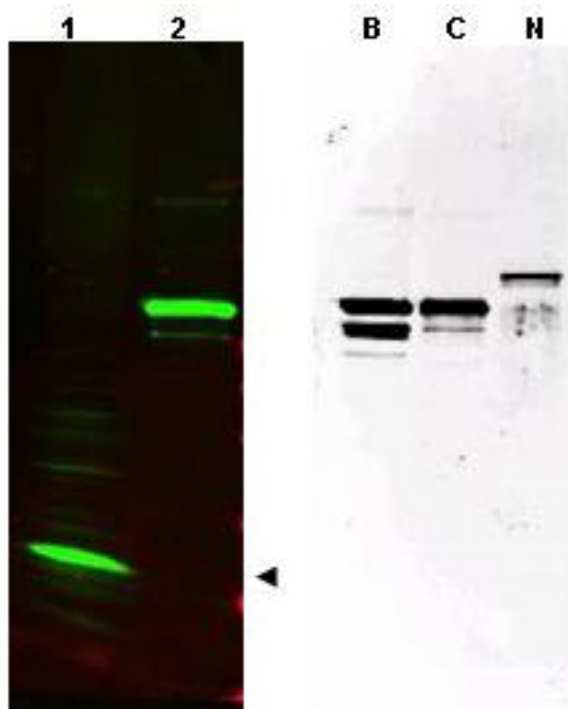
SPANXC / SPANX-C Rabbit anti-Human Polyclonal (aa31-47) Antibody - LS-B424 - LSBio	
CatalogID:	LS-B424
Validation:	This antibody replaces catalog number LS-C19001. It has been validated for use in the following assays: IHC.
Target:	SPANX family, member C (SPANXC)
Synonyms:	SPANXC Antibody, CTp11 Antibody, CT11.3 Antibody, SPANX family member C Antibody, SPAN-Xc protein Antibody, SPANX family, member C Antibody, SPANX-C Antibody, Cancer/testis antigen 11.3 Antibody
Host	SPANXC antibody was produced in Rabbit
Clonality:	Polyclonal
Immunogen Species:	SPANXC / SPANX-C antibody was raised against Human
Antigen Type:	Synthetic peptide
Immunogen:	SPANXC / SPANX-C antibody was raised against synthetic peptide from human SPANXC.
Specificity:	Amino acids 31-47 of human SPANX-C protein.
Epitope:	aa31-47
Reactivity:	Human
Purification:	Immunoaffinity purified
Presentation:	0.02 M potassium phosphate, 0.15 M sodium chloride, pH 7.2, 0.01% sodium azide.
Recommended Storage:	Long term: -20°C; Short term: +4°C. Avoid repeat freeze-thaw cycles.
Usage Summary:	Immunohistochemistry: LS-B424 was validated for use in immunohistochemistry on a panel of 21 formalin-fixed, paraffin-embedded (FFPE) human tissues after heat induced antigen retrieval in pH 6.0 citrate buffer. After incubation with the primary antibody, slides were incubated with biotinylated secondary antibody, followed by alkaline phosphatase-streptavidin and chromogen. The stained slides were evaluated by a pathologist to confirm staining specificity. The optimal working concentration for LS-B424 was determined to be 5 ug/ml.
Uses:	IHC - Paraffin (5 µg/ml), Western blot (1:500 - 1:3000), ELISA (1:10000 - 1:50000) (Optimal dilution to be determined by the researcher)
Size:	50 µg
Concentration:	1 mg/ml

Immunohistochemistry Image:



Anti-SPANXC antibody IHC of human testis. Immunohistochemistry of formalin-fixed, paraffin-embedded tissue after heat-induced antigen retrieval. Antibody LS-B424 concentration 5 ug/ml.

Western Blot Image:



Anti-SPANX (pan) Antibody - Western Blot. Western blot of affinity purified anti-SPANX (pan) antibody shows detection of a band at ~17 kD corresponding to SPANX-C present in a nuclear extract from VWM105 cells (left panel, arrowhead). VWM105 cells are derived from a human melanoma and are positive for SPANX proteins. Lane 2 shows reactivity with a purified recombinant SPANX-C fusion protein. The right panel shows similar reactivity with purified recombinant SPANX-B, SPANX-C and SPANX-N proteins. Proteins were separated by SDS-PAGE, transferred to nitrocellulose, and probed with the primary antibody diluted to 1:1000. IRDye800 conjugated Gt-a-Rabbit IgG [H&L] MX (was used (left). IRDye is a trademark of LI-COR, Inc. Size estimation was made by comparison to prestained MW markers as indicated. Personal Communication. Vladimir Larionov, NIH, CCR, Bethesda, MD.

Requested From:

Japan

Laboratory Reagent For In Vitro Research Use Only

Not for resale without prior written consent from LifeSpan BioSciences, Inc.

Created on 9/23/2014

© 2014 LifeSpan BioSciences