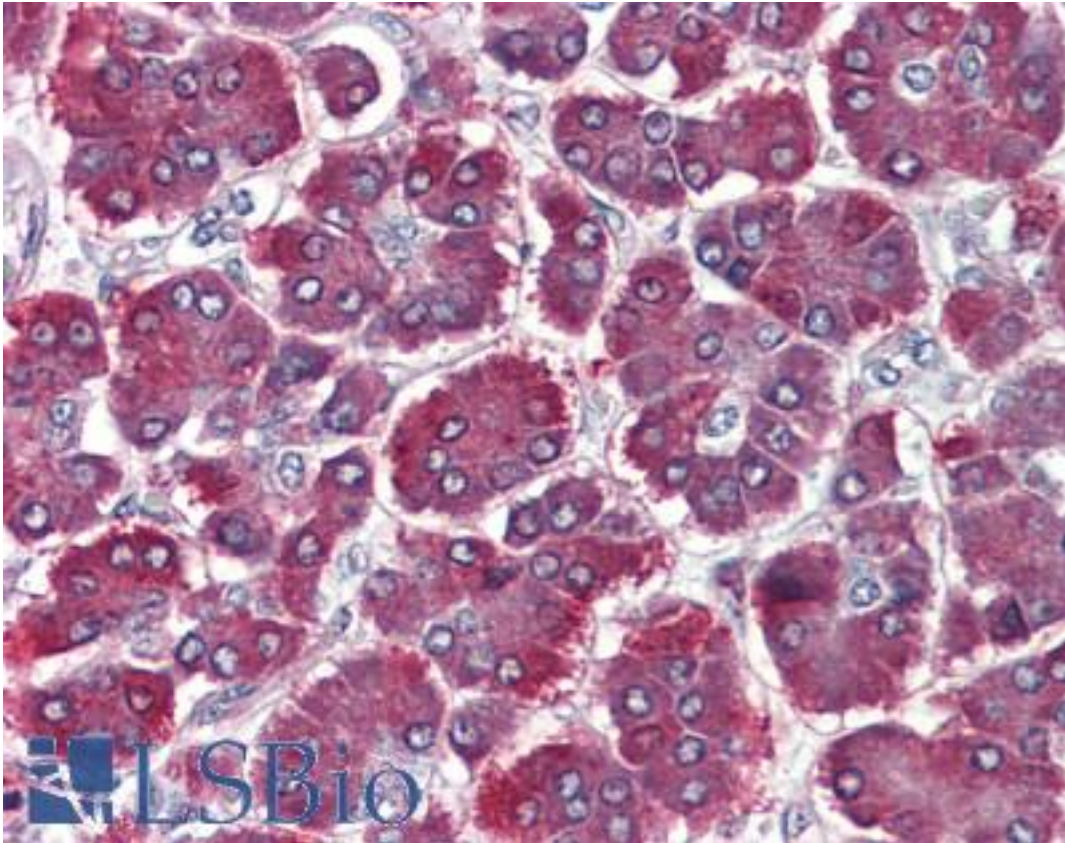


Trypsin Mouse anti-Human Monoclonal Antibody - LS-B4236 - LSBio

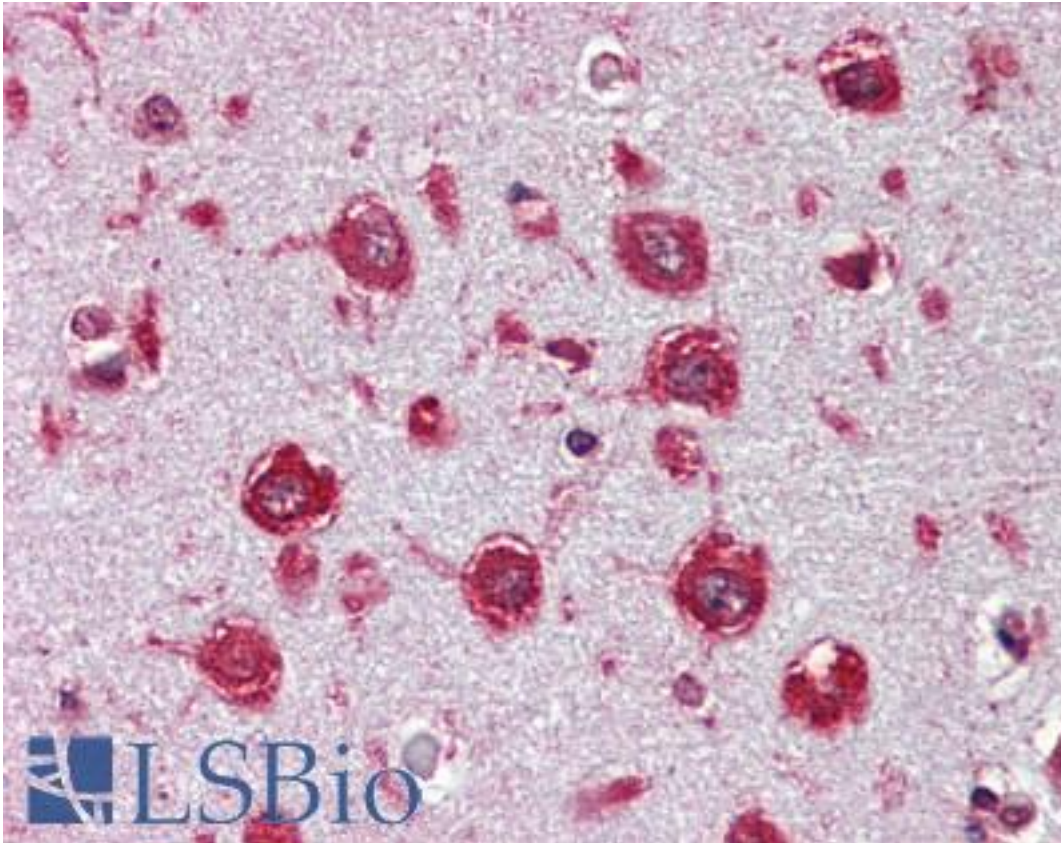
CatalogID:	LS-B4236
Validation:	This antibody replaces catalog number LS-C115837. It has been validated for use in the following assays: IHC-P.
Target:	Trypsin
Host	Trypsin antibody was produced in Mouse
Clonality:	Monoclonal
Isotype:	IgG2b
Immunogen Species:	Trypsin antibody was raised against Human
Antigen Type:	Purified protein
Immunogen:	Trypsin antibody was raised against purified human pancreatic trypsin.
Specificity:	Specifically recognizes pancreatic trypsin. Does not cross- react with pancreatic chymotrypsin.
Reactivity:	Human
Purification:	Protein G purified
Presentation:	PBS, pH 7.4
Recommended Storage:	Long term: -70°C; Short term: -20°C
Usage Summary:	May be used in immunoassays to detect and quantitate pancreatic trypsin.
Uses:	IHC - Paraffin (10 µg/ml), ELISA (1:12500) (Optimal dilution to be determined by the researcher)
Size:	50 µg
Concentration:	0.9 mg/ml

Immunohistochemistry Image:



Anti-Trypsin antibody IHC of human pancreas. Immunohistochemistry of formalin-fixed, paraffin-embedded tissue after heat-induced antigen retrieval. Antibody LS-B4236 concentration 10 ug/ml.

Immunohistochemistry Image:



Anti-Trypsin antibody IHC of human brain, cortex. Immunohistochemistry of formalin-fixed, paraffin-embedded tissue after heat-induced antigen retrieval. Antibody LS-B4236 concentration 10 ug/ml.

Requested From:

Japan

Laboratory Reagent For In Vitro Research Use Only

Not for resale without prior written consent from LifeSpan BioSciences, Inc.

Created on 9/23/2014

© 2014 LifeSpan BioSciences