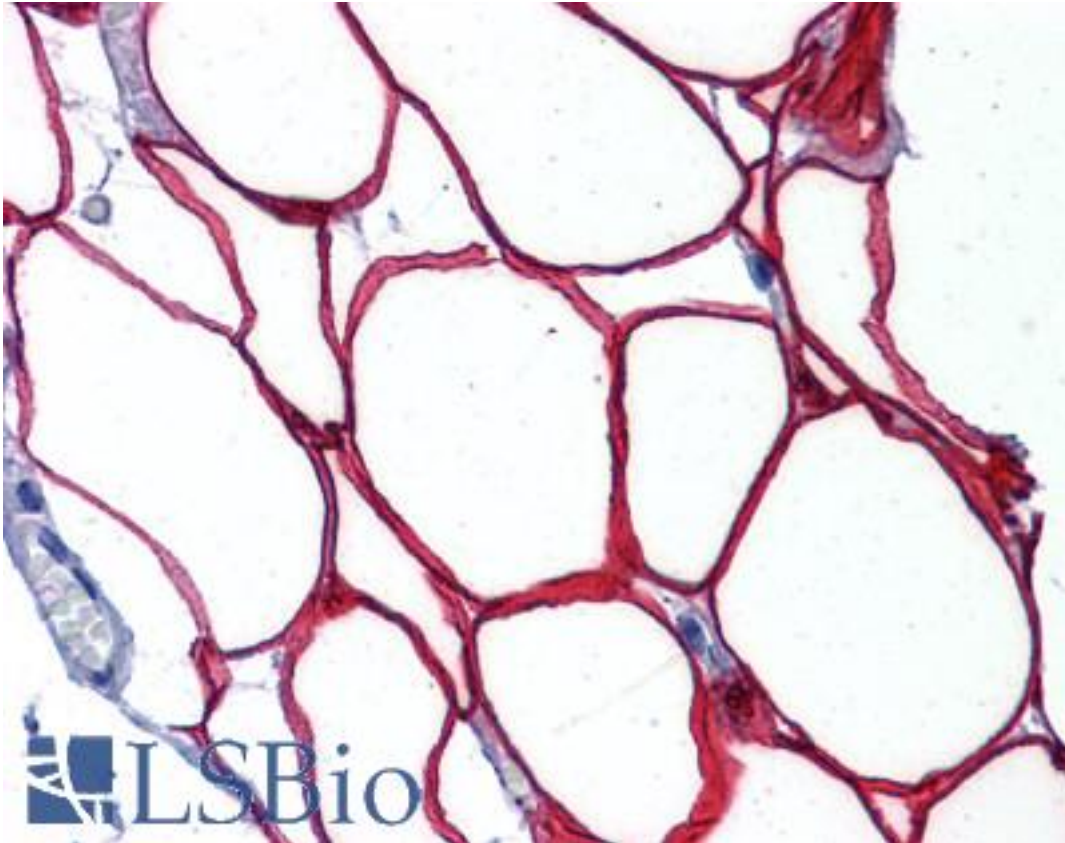


RNF25 Rabbit anti-Human Polyclonal Antibody - LS-B4226 - LSBio

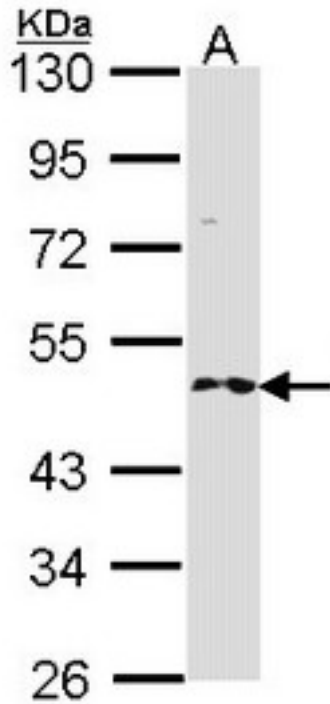
CatalogID:	LS-B4226
Validation:	This antibody replaces catalog number LS-C109375. It has been validated for use in the following assays: IHC-P.
Target:	ring finger protein 25 (RNF25)
Synonyms:	RNF25 Antibody, AO7 Antibody, Ring finger protein 25 Antibody, Ring finger protein AO7 Antibody
Host	RNF25 antibody was produced in Rabbit
Clonality:	Polyclonal
Immunogen Species:	RNF25 antibody was raised against Human
Antigen Type:	Synthetic peptide
Immunogen:	RNF25 antibody was raised against synthetic peptide containing a sequence corresponding to a region within amino acids 377 and 439 of RNF25.
Specificity:	Human RNF25.
Reactivity:	Human
Purification:	Immunoaffinity purified
Presentation:	PBS, pH 7, 40% Glycerol, 0.01% Thimerosal
Recommended Storage:	Aliquot and store at -20°C. Minimize freezing and thawing.
Uses:	IHC - Paraffin (10 µg/ml), Western blot (1:500 - 1:3000) (Optimal dilution to be determined by the researcher)
Size:	50 µl

Immunohistochemistry Image:



Anti-RNF25 antibody IHC of human adipocytes. Immunohistochemistry of formalin-fixed, paraffin-embedded tissue after heat-induced antigen retrieval. Antibody LS-B4226 concentration 10 ug/ml.

Western Blot Image:



Sample (30 ug of whole cell lysate). A: H1299. 10% SDS PAGE. RNF25 antibody diluted at 1:1000.

Requested From:

Japan

Laboratory Reagent For In Vitro Research Use Only

Not for resale without prior written consent from LifeSpan BioSciences, Inc.

Created on 9/23/2014

© 2014 LifeSpan BioSciences