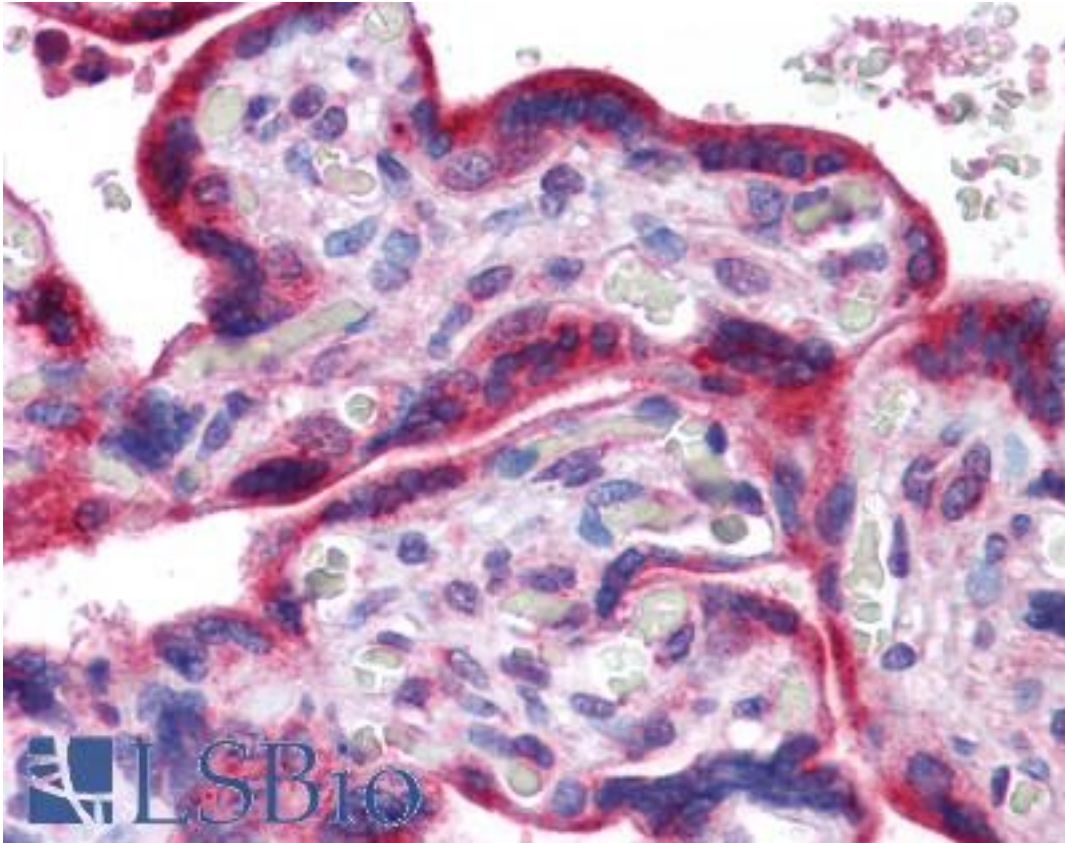


PLK1 / PLK-1 Rabbit anti-Human Polyclonal Antibody - LS-B4225 - LSBio

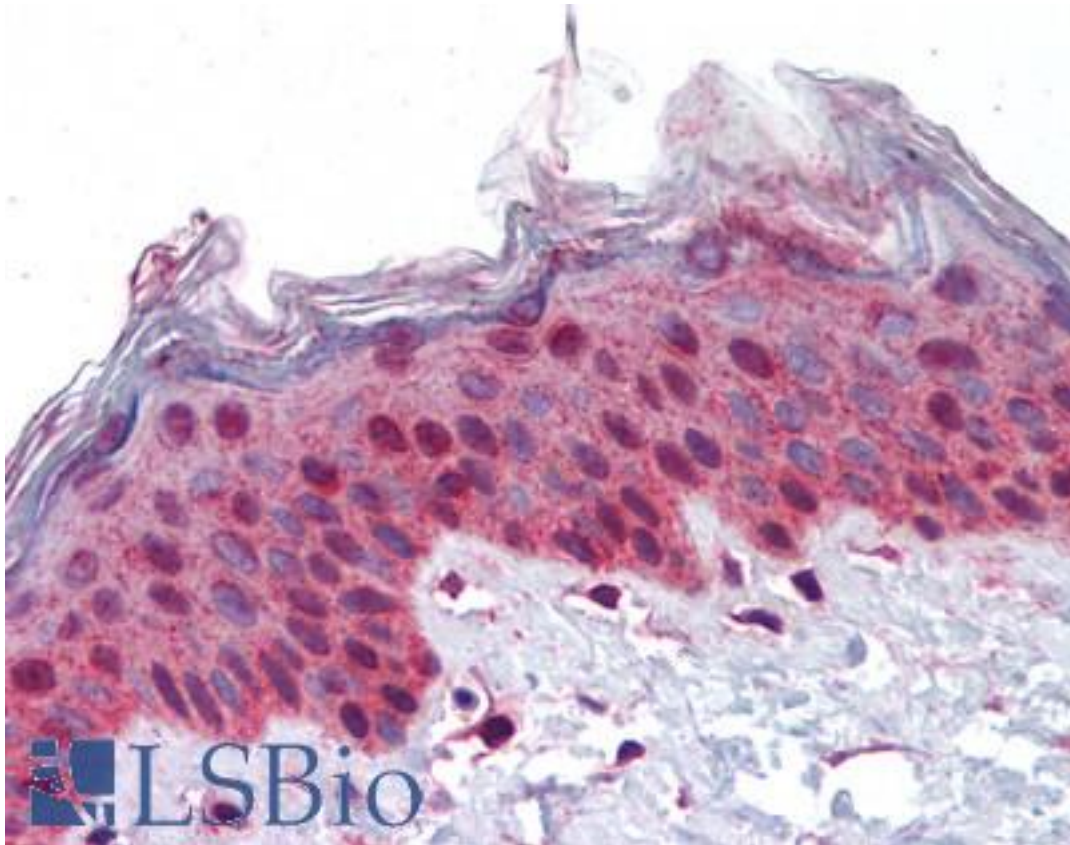
CatalogID:	LS-B4225
Validation:	This antibody replaces catalog number LS-C109374. It has been validated for use in the following assays: IHC-P.
Target:	polo-like kinase 1 (PLK1)
Synonyms:	PLK1 Antibody, Polo like kinase Antibody, Polo-like kinase (Drosophila) Antibody, Polo-like kinase 1 Antibody, STPK13 Antibody, Polo (Drosophia)-like kinase Antibody, PLK Antibody, PLK-1 Antibody
Family / Subfamily:	Protein Kinase / Polo
Host	PLK1 antibody was produced in Rabbit
Clonality:	Polyclonal
Immunogen Species:	PLK1 / PLK-1 antibody was raised against Human
Immunogen:	PLK1 / PLK-1 antibody was raised against recombinant protein fragment containing a sequence corresponding to a region within amino acids 161 and 440 of Human PLK1.
Specificity:	Human PLK1. Predicted cross-reactivity based on amino acid sequence homology: mouse (95%), rat (95%), bovine (95%).
Reactivity:	Human
Purification:	Immunoaffinity purified
Presentation:	0.1 M Tris-glycine, pH 7, 10% Glycerol, 0.01% Thimerosal
Recommended Storage:	Aliquot and store at -20°C. Minimize freezing and thawing.
Uses:	IHC - Paraffin (10 µg/ml), Western blot (1:500 - 1:3000) (Optimal dilution to be determined by the researcher)
Size:	50 µl
Concentration:	1 mg/ml

Immunohistochemistry Image:



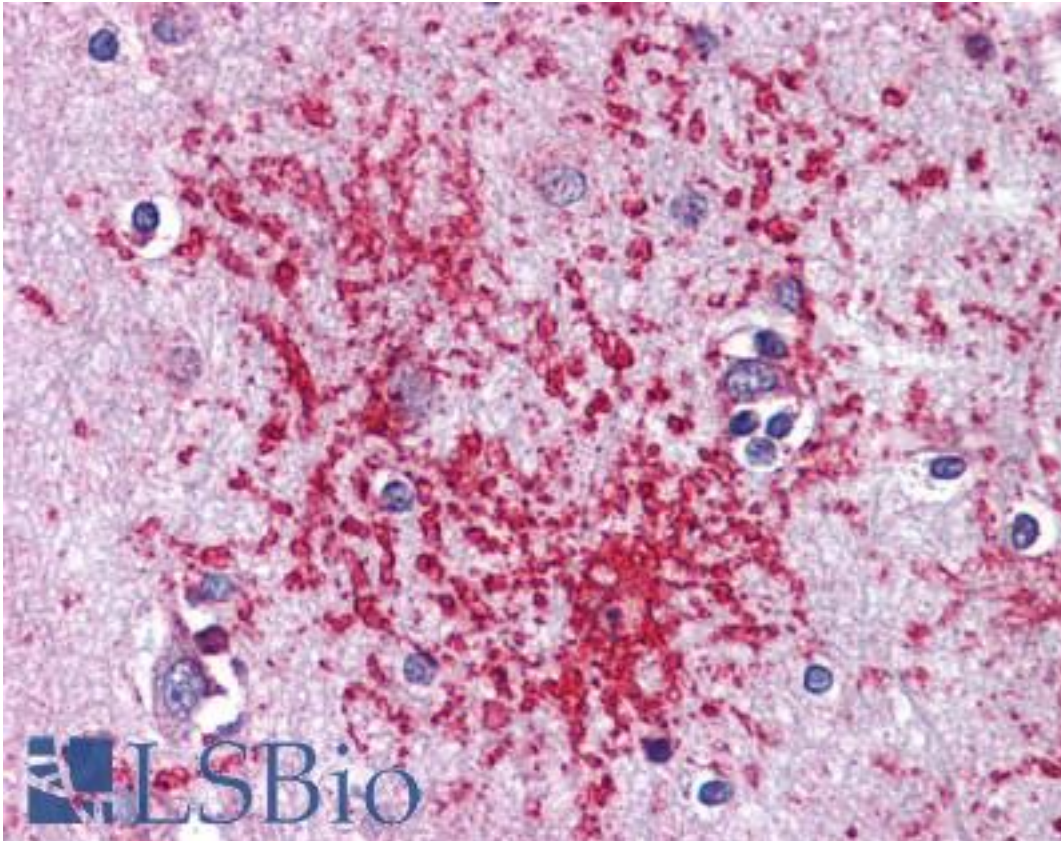
Anti-PLK1 antibody IHC of human placenta. Immunohistochemistry of formalin-fixed, paraffin-embedded tissue after heat-induced antigen retrieval. Antibody LS-B4225 concentration 10 ug/ml.

Immunohistochemistry Image:



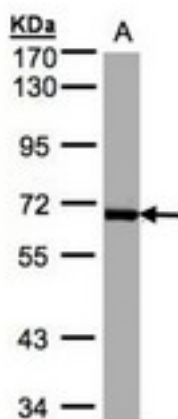
Anti-PLK1 antibody IHC of human skin. Immunohistochemistry of formalin-fixed, paraffin-embedded tissue after heat-induced antigen retrieval. Antibody LS-B4225 concentration 10 ug/ml.

Immunohistochemistry Image:



Anti-PLK1 antibody IHC of human brain, cortex. Immunohistochemistry of formalin-fixed, paraffin-embedded tissue after heat-induced antigen retrieval. Antibody LS-B4225 concentration 10 ug/ml.

Western Blot Image:



Sample(30 ug whole cell lysate). A: Raji. 7.5% SDS PAGE. PLK1 antibody diluted at 1:1000.

Requested From:

Japan

Laboratory Reagent For In Vitro Research Use Only

Not for resale without prior written consent from LifeSpan BioSciences, Inc.

Created on 9/23/2014

© 2014 LifeSpan BioSciences