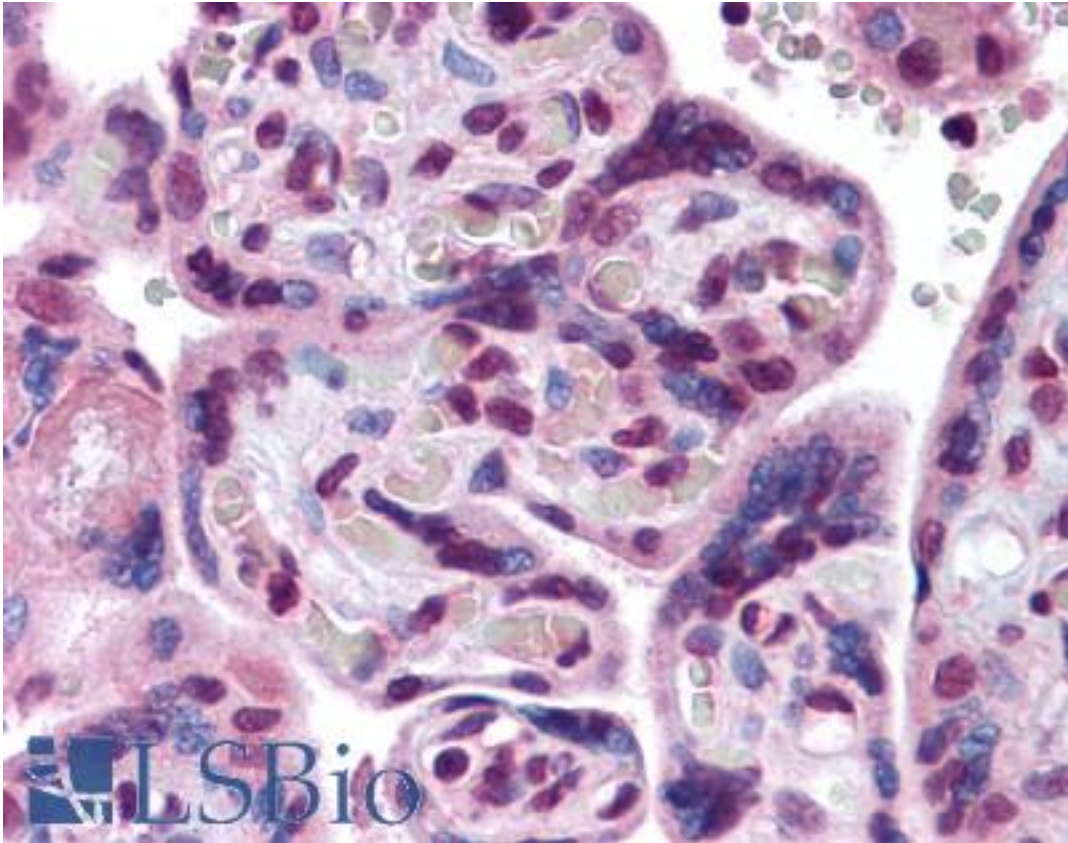


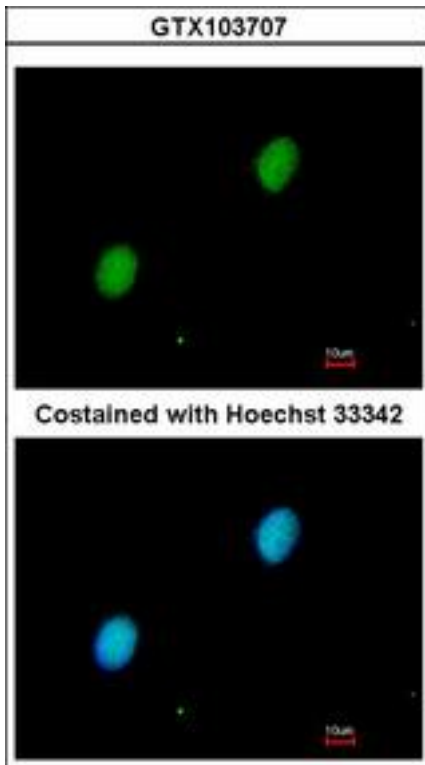
HIF2A / EPAS1 Rabbit anti-Human Polyclonal Antibody - LS-B4223 - LSBio	
CatalogID:	LS-B4223
Validation:	This antibody replaces catalog number LS-C109372. It has been validated for use in the following assays: IHC-P.
Target:	endothelial PAS domain protein 1 (EPAS1)
Synonyms:	EPAS1 Antibody, BHLHe73 Antibody, ECYT4 Antibody, HIF-1-alpha-like factor Antibody, HIF2-alpha Antibody, HIF2A Antibody, EPAS-1 Antibody, HIF-2-alpha Antibody, HIF-1alpha-like factor Antibody, MOP2 Antibody, Member of PAS protein 2 Antibody, PASD2 Antibody
Host	EPAS1 antibody was produced in Rabbit
Clonality:	Polyclonal
Immunogen Species:	HIF2A / EPAS1 antibody was raised against Human
Immunogen:	HIF2A / EPAS1 antibody was raised against recombinant fragment corresponding to a region within amino acids 74 and 376 of HIF2 alpha (Uniprot ID#Q99814)
Specificity:	Mouse (97%), Chicken (94%), Pig (99%), Rat (95%), Xenopus laevis (86%), Bovine (98%), Xenopus tropicalis (86%)
Reactivity:	Human
Predicted Reactivity:	Rat, Bovine, Pig, Chicken, Xenopus
Purification:	Immunoaffinity purified
Presentation:	PBS, 20% glycerol (pH 7), 0.025% proclin
Recommended Storage:	Aliquot and store at -20°C. Minimize freezing and thawing.
Uses:	IHC - Paraffin (10 µg/ml), ICC, Immunofluorescence (1:100 - 1:200), Western blot (1:500 - 1:3000) (Optimal dilution to be determined by the researcher)
Size:	50 µl
Concentration:	1 mg/ml

Immunohistochemistry Image:



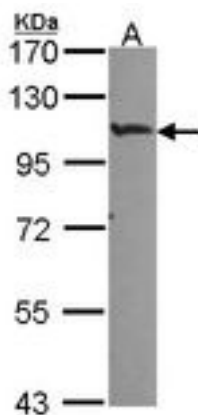
Anti-HIF2A antibody IHC of human placenta. Immunohistochemistry of formalin-fixed, paraffin-embedded tissue after heat-induced antigen retrieval. Antibody LS-B4223 concentration 10 ug/ml.

Immunofluorescence Image:



Immunofluorescence of paraformaldehyde-fixed HeLa, using HIF2 alpha antibody at 1:200 dilution.

Western Blot Image:



Sample (30 ug of whole cell lysate). A: A549. 7.5% SDS PAGE. HIF-2 alpha antibody. EPAS1 antibody diluted at 1:1000.

Requested From:

Japan

Laboratory Reagent For In Vitro Research Use Only

Not for resale without prior written consent from LifeSpan BioSciences, Inc.

Created on 9/23/2014

© 2014 LifeSpan BioSciences