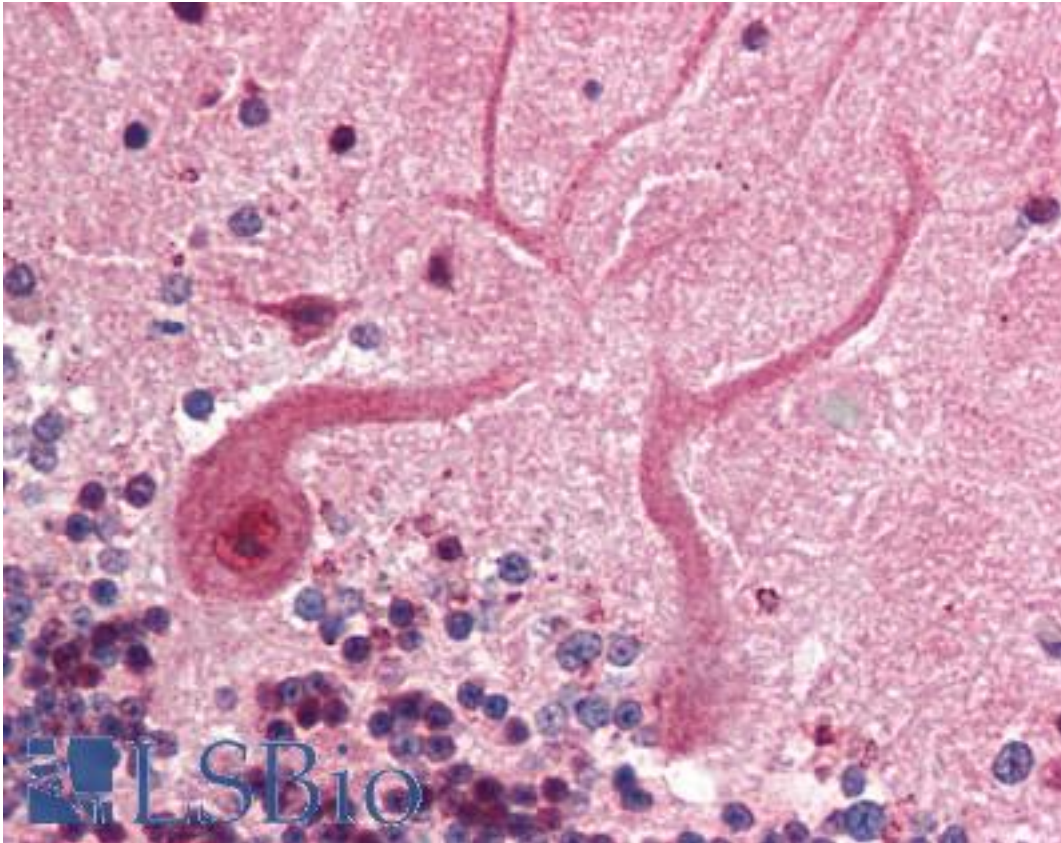


SKP1 Rabbit anti-Human Polyclonal (C-Terminus) Antibody - LS-B422 - LSBio	
CatalogID:	LS-B422
Validation:	This antibody replaces catalog number LS-C19095. It has been validated for use in the following assays: IHC.
Target:	S-phase kinase-associated protein 1 (SKP1)
Synonyms:	SKP1 Antibody, Cyclin A/CDK2-associated p19 Antibody, OCP-2 Antibody, OCP-II Antibody, Organ of Corti protein 2 Antibody, SIII Antibody, TCEB1L Antibody, Organ of Corti protein II Antibody, p19A Antibody, SKP1A Antibody, EMC19 Antibody, OCP2 Antibody, p19skp1 Antibody
Host	SKP1 antibody was produced in Rabbit
Clonality:	Polyclonal
Immunogen Species:	SKP1 antibody was raised against Human
Antigen Type:	Synthetic peptide
Immunogen:	SKP1 antibody was raised against synthetic peptide from human SKP1.
Specificity:	Amino acids 152-163 of Human SKP1 (C-terminus) coupled to KLH.
Epitope:	C-Terminus
Reactivity:	Human
Purification:	Delipidated and defibrinated
Presentation:	Contains 0.01% sodium azide
Recommended Storage:	+4°C or -20°C, Avoid repeated freezing and thawing.
Usage Summary:	Immunohistochemistry: LS-B422 was validated for use in immunohistochemistry on a panel of 21 formalin-fixed, paraffin-embedded (FFPE) human tissues after heat induced antigen retrieval in pH 6.0 citrate buffer. After incubation with the primary antibody, slides were incubated with biotinylated secondary antibody, followed by alkaline phosphatase-streptavidin and chromogen. The stained slides were evaluated by a pathologist to confirm staining specificity. The optimal working concentration for LS-B422 was determined to be 1:500.
Uses:	IHC - Paraffin (1:500), Western blot (1:500 - 1:1000), Immunoprecipitation, ELISA (1:2000 - 1:10000) (Optimal dilution to be determined by the researcher)
Size:	50 µl

Immunohistochemistry Image:



Anti-SKP1 antibody IHC of human brain, cerebellum. Immunohistochemistry of formalin-fixed, paraffin-embedded tissue after heat-induced antigen retrieval. Antibody LS-B422 dilution 1:500.

Requested From:

Japan

Laboratory Reagent For In Vitro Research Use Only

Not for resale without prior written consent from LifeSpan BioSciences, Inc.

Created on 9/23/2014

© 2014 LifeSpan BioSciences