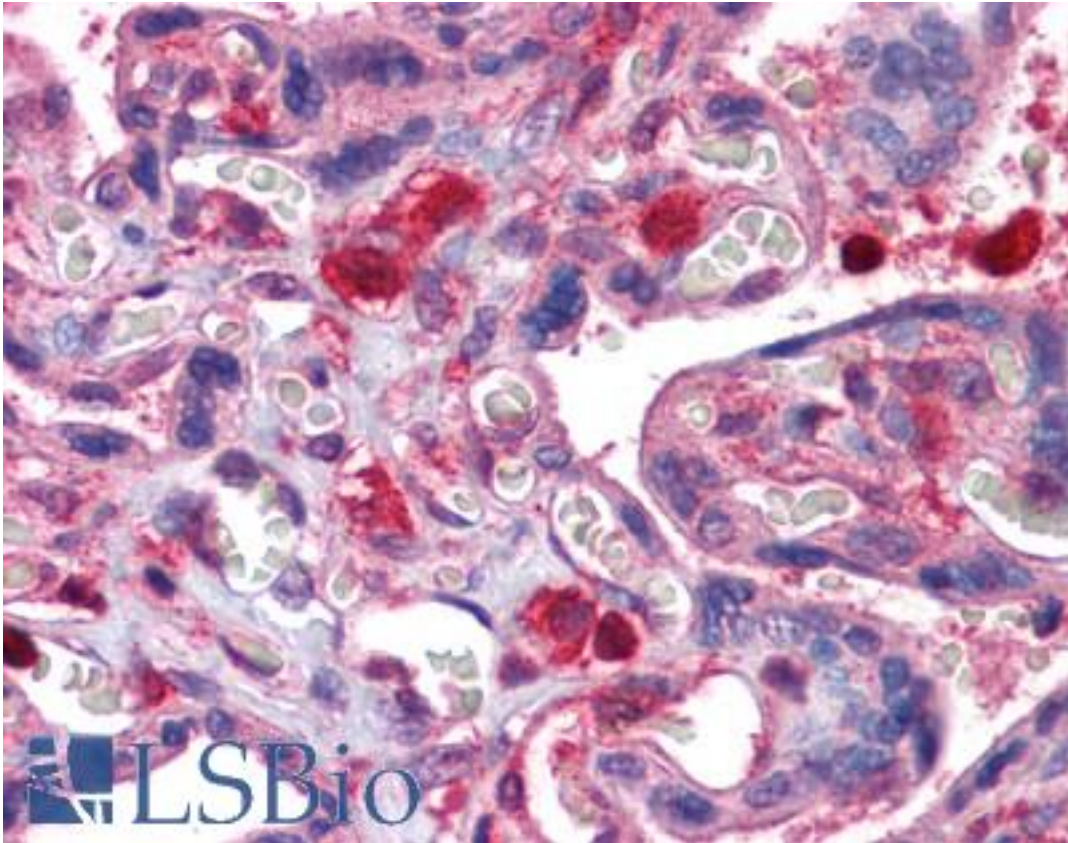


GDI2 Rabbit anti-Human Polyclonal Antibody - LS-B4219 - LSBio

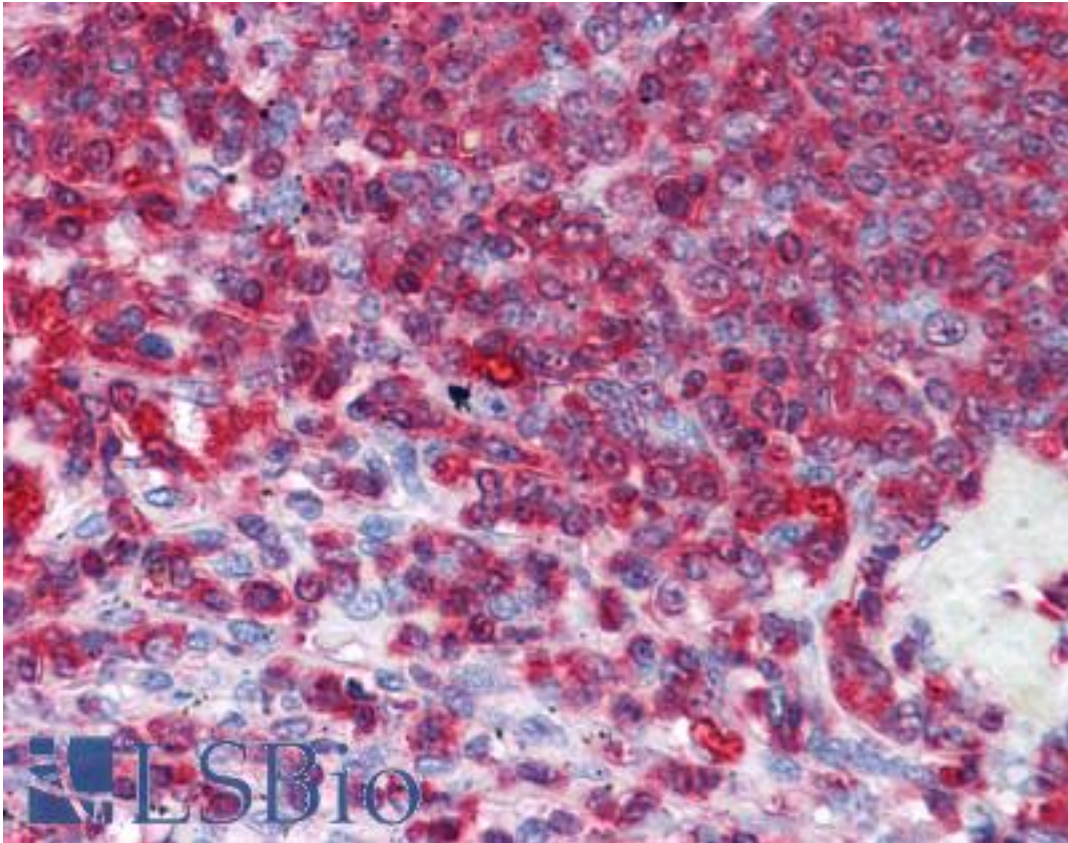
CatalogID:	LS-B4219
Validation:	This antibody replaces catalog number LS-C109368. It has been validated for use in the following assays: IHC-P.
Target:	GDP dissociation inhibitor 2 (GDI2)
Synonyms:	GDI2 Antibody, GDP dissociation inhibitor 2 Antibody, GDI-2 Antibody, Rab GDI beta Antibody, RABGDIB Antibody
Host	GDI2 antibody was produced in Rabbit
Clonality:	Polyclonal
Immunogen Species:	GDI2 antibody was raised against Human
Immunogen:	GDI2 antibody was raised against recombinant protein fragment containing a sequence corresponding to a region within amino acids 1 and 197 of Human Rho GDI2.
Specificity:	Human Rho GDI2. Predicted cross-reactivity based on amino acid sequence homology: mouse (90%), rat (89%), bovine (93%).
Reactivity:	Human
Purification:	Immunoaffinity purified
Presentation:	0.1 M Tris-glycine, pH 7, 10% Glycerol, 0.01% Thimerosal
Recommended Storage:	Aliquot and store at -20°C. Minimize freezing and thawing.
Uses:	IHC - Paraffin (10 µg/ml), Western blot (1:500 - 1:3000) (Optimal dilution to be determined by the researcher)
Size:	50 µl
Concentration:	1 mg/ml

Immunohistochemistry Image:



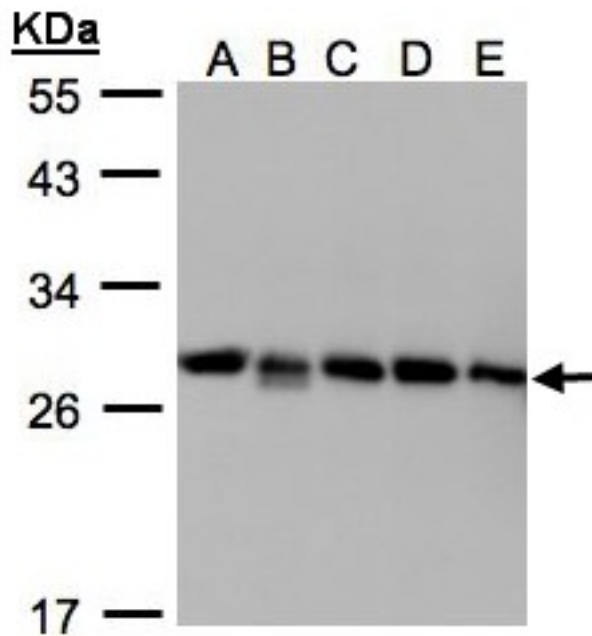
Anti-GDI2 antibody IHC of human placenta. Immunohistochemistry of formalin-fixed, paraffin-embedded tissue after heat-induced antigen retrieval. Antibody LS-B4219 concentration 10 ug/ml.

Immunohistochemistry Image:



Anti-GDI2 antibody IHC of human spleen. Immunohistochemistry of formalin-fixed, paraffin-embedded tissue after heat-induced antigen retrieval. Antibody LS-B4219 concentration 10 ug/ml.

Western Blot Image:



Sample(30g whole cell lysate). A: 293T. B: A431. C: H1299. D: HeLa S3. E: Hep G2. 12% SDS PAGE. GDI2 antibody diluted at 1:1000

Requested From:

Japan

Laboratory Reagent For In Vitro Research Use Only

Not for resale without prior written consent from LifeSpan BioSciences, Inc.

Created on 9/23/2014

© 2014 LifeSpan BioSciences