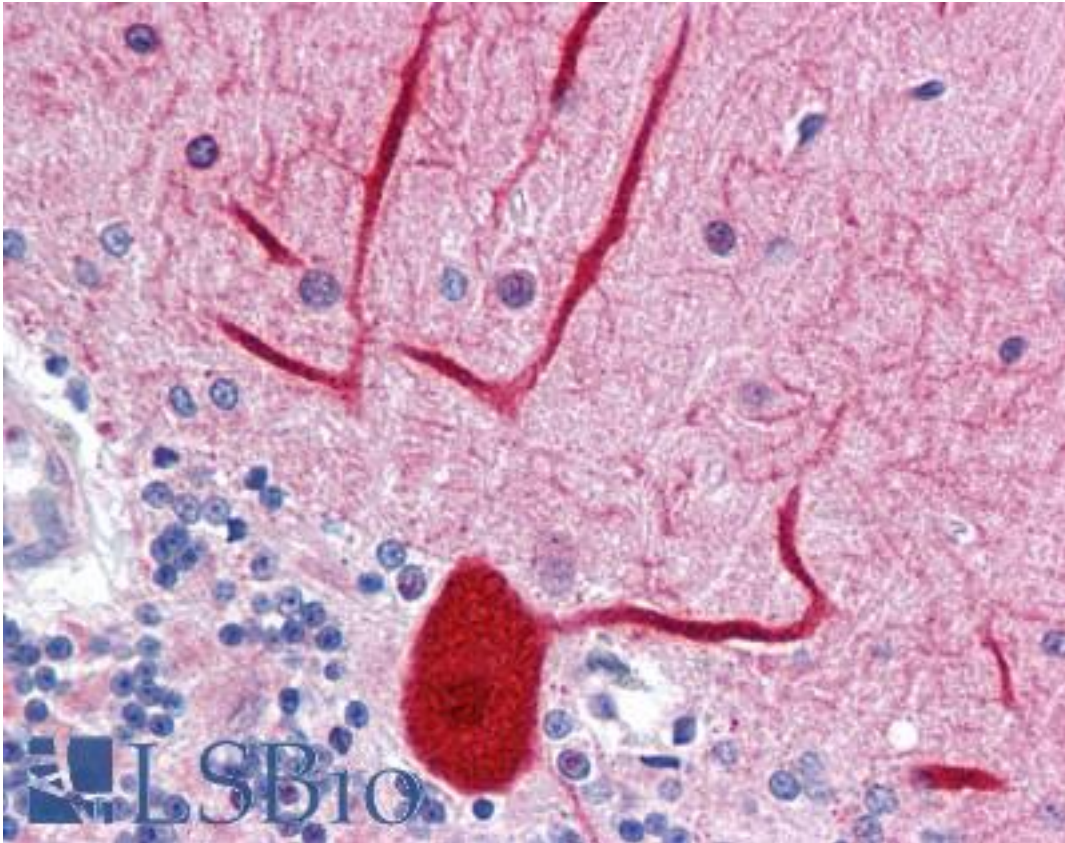


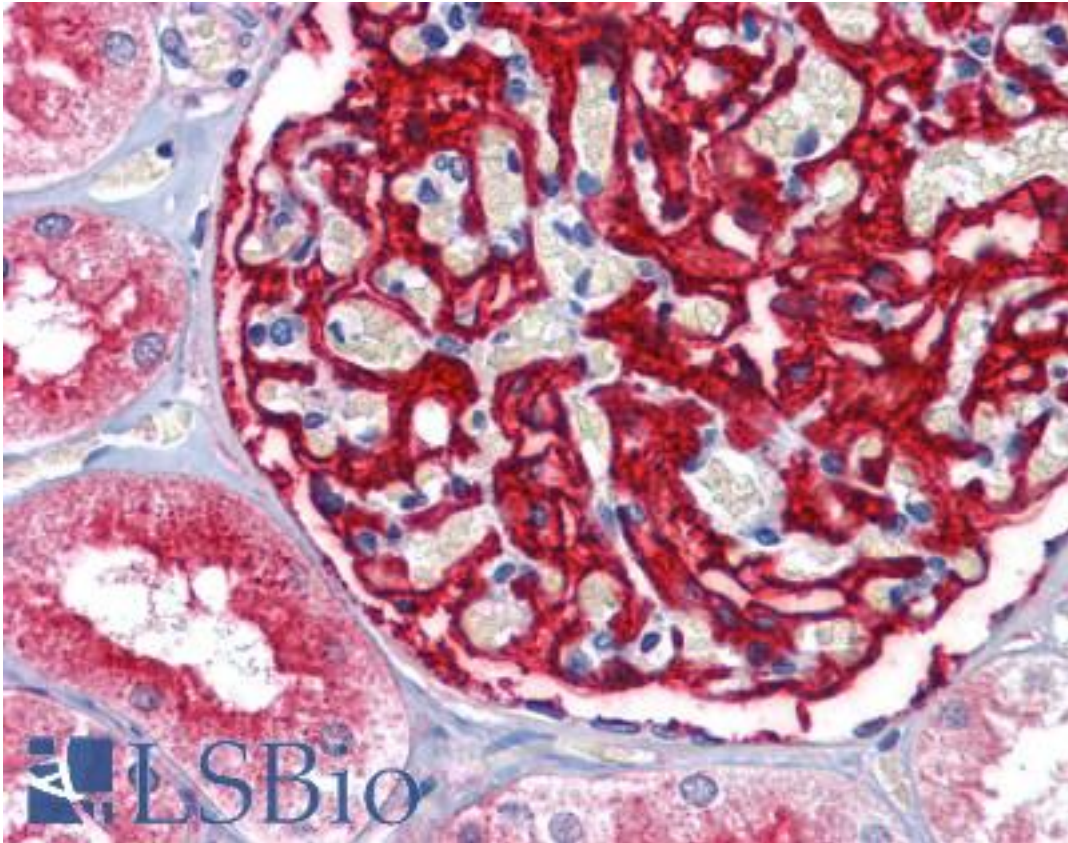
ENPEP / Aminopeptidase A Rabbit anti-Human Polyclonal Antibody - LS-B4216 - LSBio	
<b>CatalogID:</b>	LS-B4216
<b>Validation:</b>	This antibody replaces catalog number LS-C109364. It has been validated for use in the following assays: IHC-P.
<b>Target:</b>	glutamyl aminopeptidase (aminopeptidase A) (ENPEP)
<b>Synonyms:</b>	ENPEP Antibody, APA Antibody, Aminopeptidase A Antibody, AP-A Antibody, CD249 antigen Antibody, Differentiation antigen gp160 Antibody, EAP Antibody, Glutamyl aminopeptidase Antibody, gp160 Antibody, CD249 Antibody
<b>Family / Subfamily:</b>	Exopeptidase / Metallopeptidase M1
<b>Host</b>	ENPEP antibody was produced in Rabbit
<b>Clonality:</b>	Polyclonal
<b>Immunogen Species:</b>	ENPEP / Aminopeptidase A antibody was raised against Human
<b>Immunogen:</b>	ENPEP / Aminopeptidase A antibody was raised against recombinant protein fragment containing a sequence corresponding to a region within amino acids 689 and 932 of Human ENPEP.
<b>Specificity:</b>	Human Glutamyl aminopeptidase. Predicted cross-reactivity based on amino acid sequence homology: mouse (85%), rat (86%), bovine (89%), pig (90%).
<b>Reactivity:</b>	Human
<b>Purification:</b>	Immunoaffinity purified
<b>Presentation:</b>	0.1 M Tris-glycine, pH 7, 10% Glycerol, 0.01% Thimerosal
<b>Recommended Storage:</b>	Aliquot and store at -20°C. Minimize freezing and thawing.
<b>Uses:</b>	IHC - Paraffin (10 µg/ml), Western blot (1:500 - 1:3000) (Optimal dilution to be determined by the researcher)
<b>Size:</b>	50 µl
<b>Concentration:</b>	1 mg/ml

**Immunohistochemistry Image:**



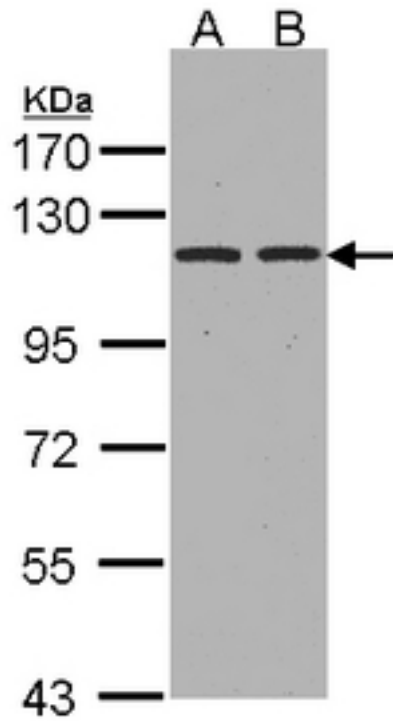
Anti-ENPEP antibody IHC of human brain, cerebellum. Immunohistochemistry of formalin-fixed, paraffin-embedded tissue after heat-induced antigen retrieval. Antibody LS-B4216 concentration 10 ug/ml.

**Immunohistochemistry Image:**



Anti-ENPEP antibody IHC of human kidney. Immunohistochemistry of formalin-fixed, paraffin-embedded tissue after heat-induced antigen retrieval. Antibody LS-B4216 concentration 10 ug/ml.

**Western Blot Image:**



Sample(30 ug whole cell lysate). A: Hep G2. B: HeLa S3. 7.5% SDS PAGE. ENPEP antibody diluted at 1:1000.

**Requested From:**

Japan

Laboratory Reagent For In Vitro Research Use Only

Not for resale without prior written consent from LifeSpan BioSciences, Inc.

Created on 9/23/2014

© 2014 LifeSpan BioSciences