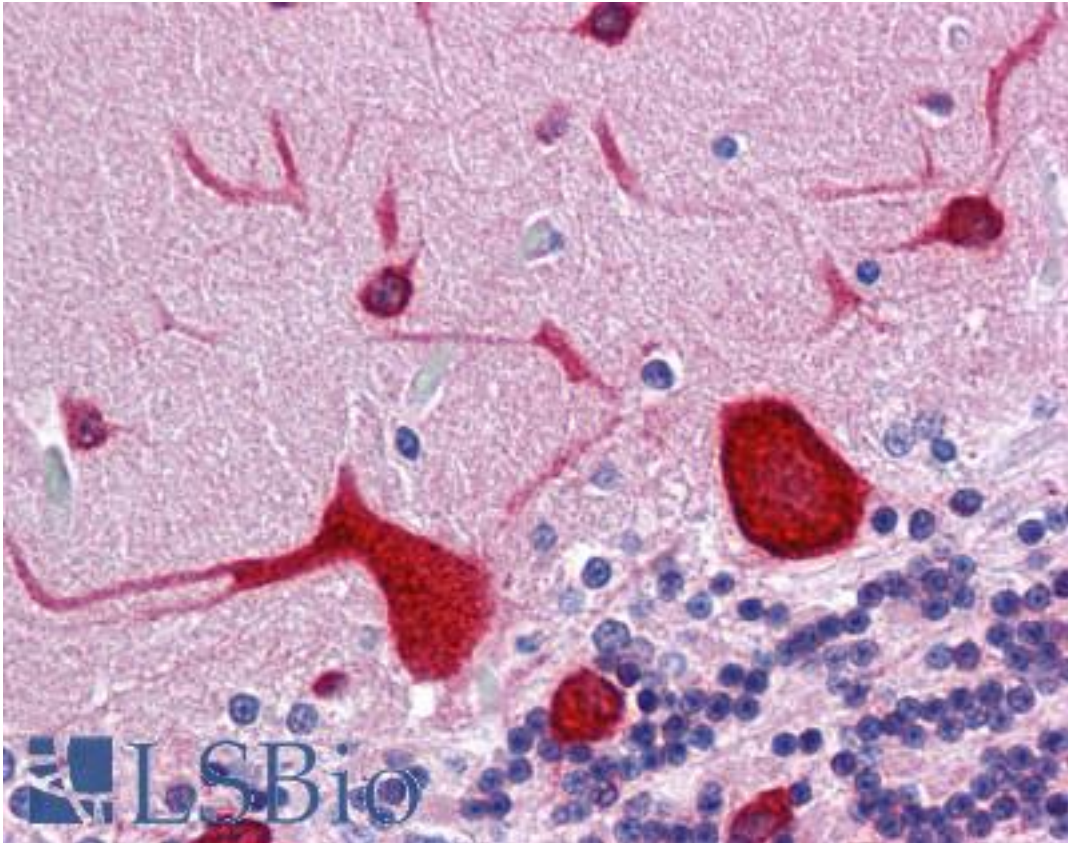


EEF1A2 Rabbit anti-Human Polyclonal Antibody - LS-B4214 - LSBio

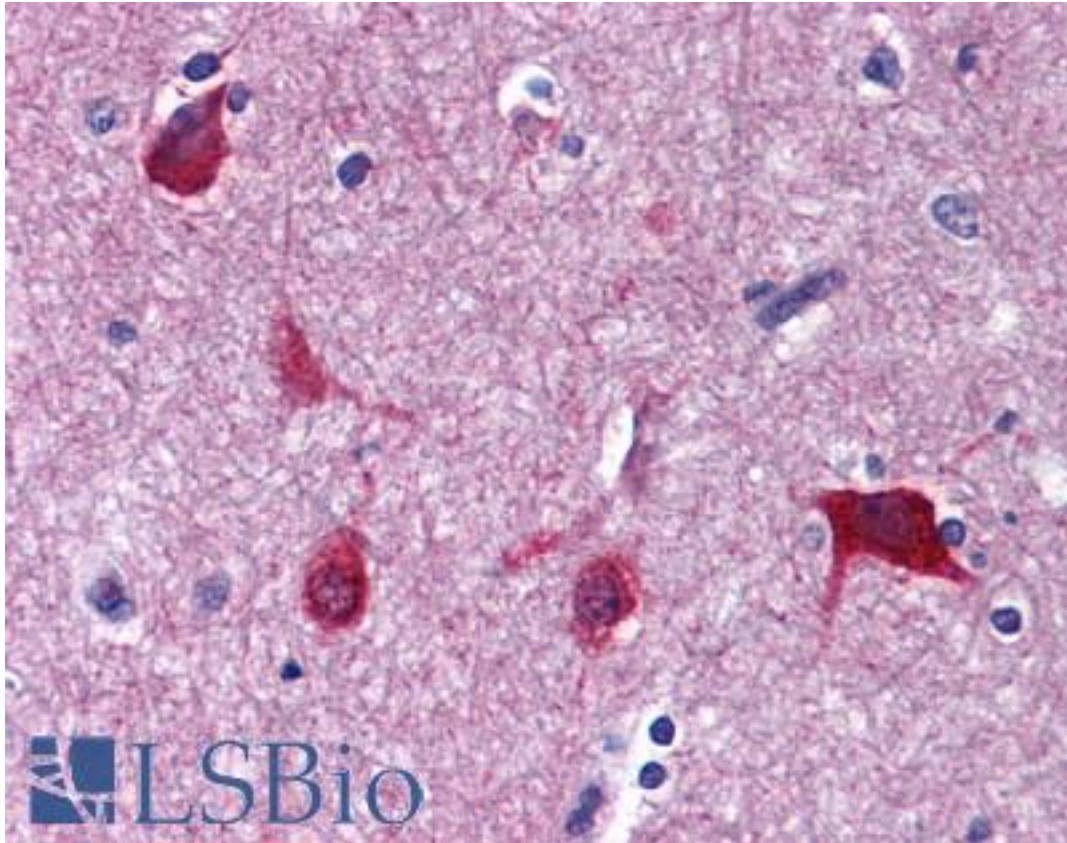
CatalogID:	LS-B4214
Validation:	This antibody replaces catalog number LS-C109353. It has been validated for use in the following assays: IHC-P.
Target:	eukaryotic translation elongation factor 1 alpha 2 (EEF1A2)
Synonyms:	EEF1A2 Antibody, EEF1A-2 Antibody, EF-1-alpha-2 Antibody, EEF1AL Antibody, EF1A Antibody, Statin-like Antibody, Statin-S1 Antibody, Statin Antibody, Statin S1 Antibody, STN Antibody, Elongation factor 1-alpha 2 Antibody, Elongation factor-1 alpha Antibody, HS1 Antibody, STNL Antibody
Host	EEF1A2 antibody was produced in Rabbit
Clonality:	Polyclonal
Immunogen Species:	EEF1A2 antibody was raised against Human
Immunogen:	EEF1A2 antibody was raised against recombinant protein fragment containing a sequence corresponding to a region within amino acids 238 and 443 of Human elongation factor 1A2.
Specificity:	Human EEF1A2. Predicted cross-reactivity based on amino acid sequence homology: mouse (99%), rat (91%), zebrafish (94%).
Reactivity:	Human
Purification:	Immunoaffinity purified
Presentation:	0.1 M Tris-glycine, pH 7, 10% Glycerol, 0.01% Thimerosal
Recommended Storage:	Aliquot and store at -20°C. Minimize freezing and thawing.
Uses:	IHC - Paraffin (10 µg/ml), Western blot (1:500 - 1:3000) (Optimal dilution to be determined by the researcher)
Size:	50 µl
Concentration:	1 mg/ml

Immunohistochemistry Image:



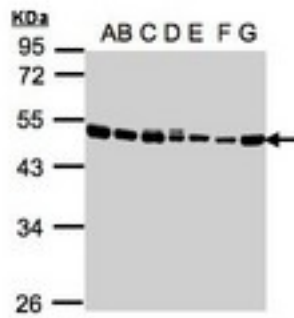
Anti-EEF1A2 antibody IHC of human brain, cerebellum. Immunohistochemistry of formalin-fixed, paraffin-embedded tissue after heat-induced antigen retrieval. Antibody LS-B4214 concentration 10 ug/ml.

Immunohistochemistry Image:



Anti-EEF1A2 antibody IHC of human brain, cortex. Immunohistochemistry of formalin-fixed, paraffin-embedded tissue after heat-induced antigen retrieval. Antibody LS-B4214 concentration 10 ug/ml.

Western Blot Image:



Sample(30g whole cell lysate). A: 293T. B: A431. C: H1299. D: HeLa S3. E: Hep G2. F: MOLT4. G: Raji. 10% SDS PAGE. EEF1A2 antibody diluted at 1:1000

Requested From:

Japan

Laboratory Reagent For In Vitro Research Use Only

Not for resale without prior written consent from LifeSpan BioSciences, Inc.

Created on 9/23/2014

© 2014 LifeSpan BioSciences