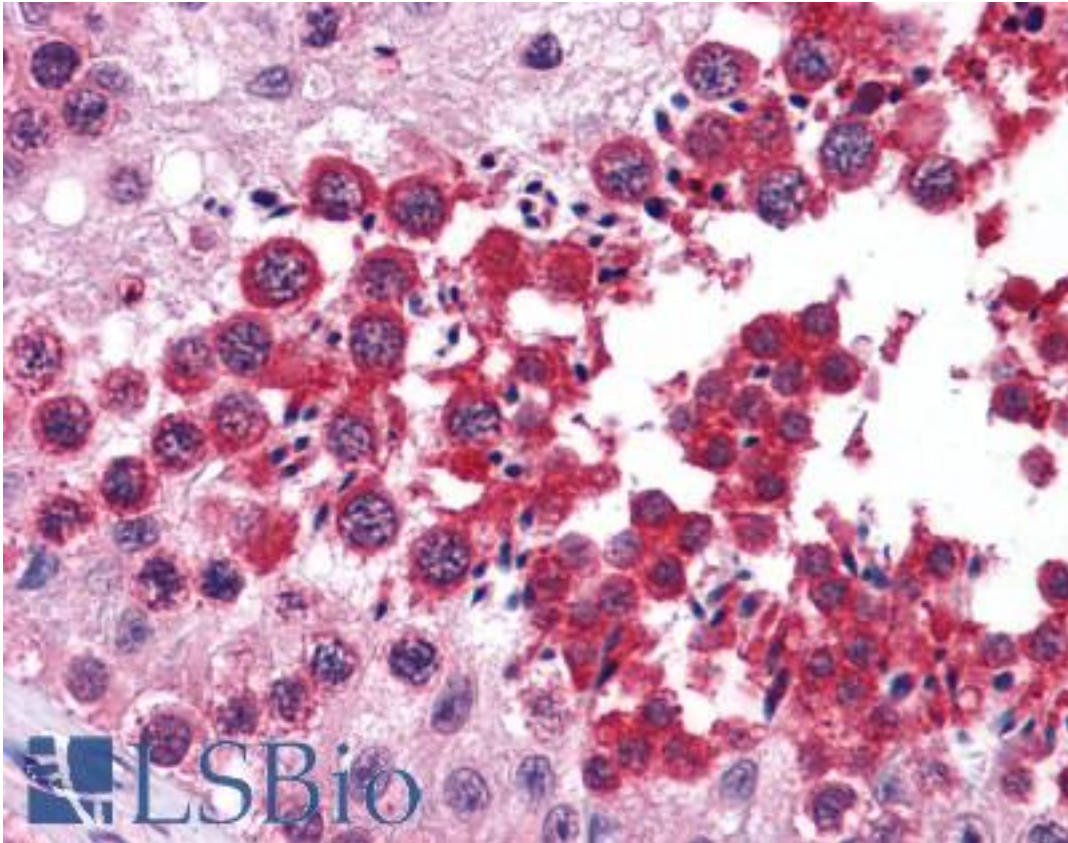


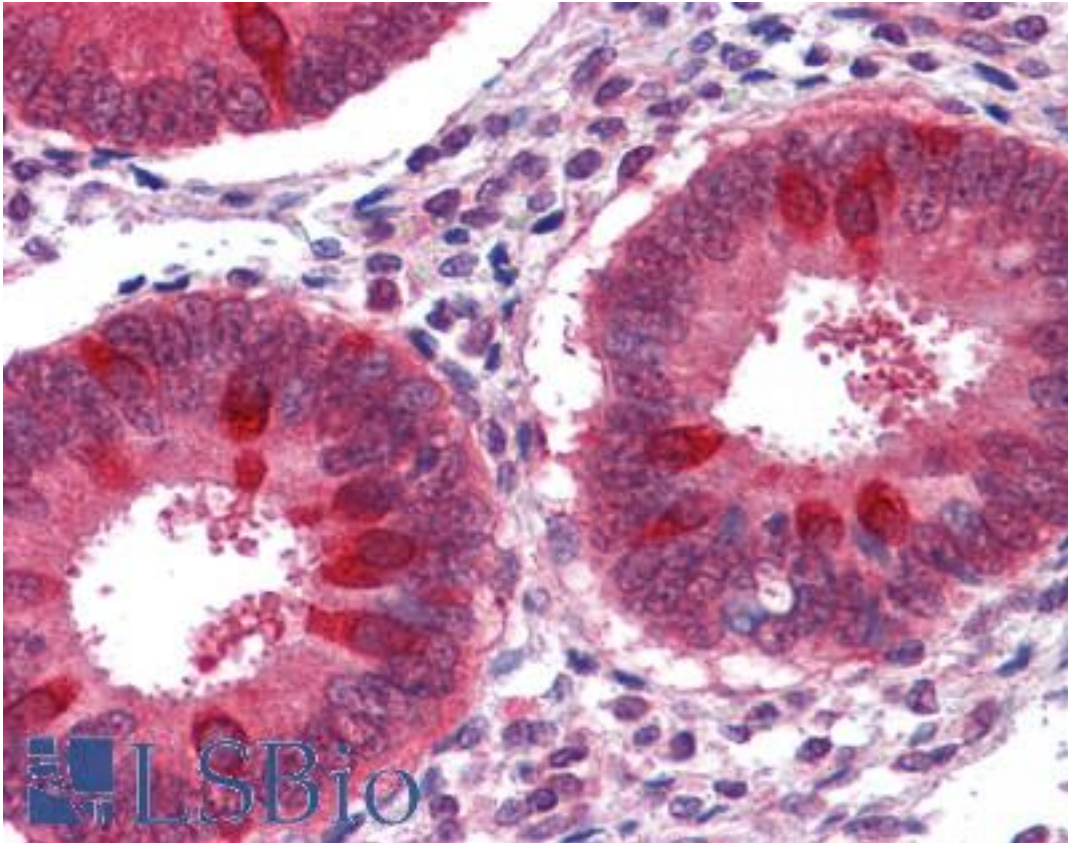
TIP48 / RUVBL2 Rabbit anti-Human Polyclonal Antibody - LS-B4213 - LSBio	
<b>CatalogID:</b>	LS-B4213
<b>Validation:</b>	This antibody replaces catalog number LS-C109352. It has been validated for use in the following assays: IHC-P.
<b>Target:</b>	RuvB-like AAA ATPase 2 (RUVBL2)
<b>Synonyms:</b>	RUVBL2 Antibody, 48 kDa TBP-interacting protein Antibody, ECP-51 Antibody, ECP51 Antibody, INO80J Antibody, INO80 complex subunit J Antibody, REPTIN Antibody, Reptin52 Antibody, RuvB-like 2 (E. coli) Antibody, RuvB-like 2 Antibody, TIP49B Antibody, TIP48 Antibody, RuvB (E coli homolog)-like 2 Antibody, RVB2 Antibody, CGI-46 Antibody, Repressing pontin 52 Antibody, Reptin 52 Antibody, Reptin52 protein Antibody, TAP54-beta Antibody, TBP-interacting protein, 48-KD Antibody, TIH2 Antibody
<b>Host</b>	RUVBL2 antibody was produced in Rabbit
<b>Clonality:</b>	Polyclonal
<b>Immunogen Species:</b>	TIP48 / RUVBL2 antibody was raised against Human
<b>Immunogen:</b>	TIP48 / RUVBL2 antibody was raised against recombinant protein fragment containing a sequence corresponding to a region within amino acids 304 and 458 of Human RUVBL2.
<b>Specificity:</b>	Human RUVBL2. Predicted cross-reactivity based on amino acid sequence homology: mouse (99%), rat (99%), bovine (98%), zebrafish (82%).
<b>Reactivity:</b>	Human
<b>Purification:</b>	Immunoaffinity purified
<b>Presentation:</b>	0.1 M Tris-glycine, pH 7, 10% Glycerol, 0.01% Thimerosal
<b>Recommended Storage:</b>	Aliquot and store at -20°C. Minimize freezing and thawing.
<b>Uses:</b>	IHC - Paraffin (10 µg/ml), Western blot (1:1000 - 1:10000) (Optimal dilution to be determined by the researcher)
<b>Size:</b>	50 µl
<b>Concentration:</b>	0.94 mg/ml

**Immunohistochemistry Image:**



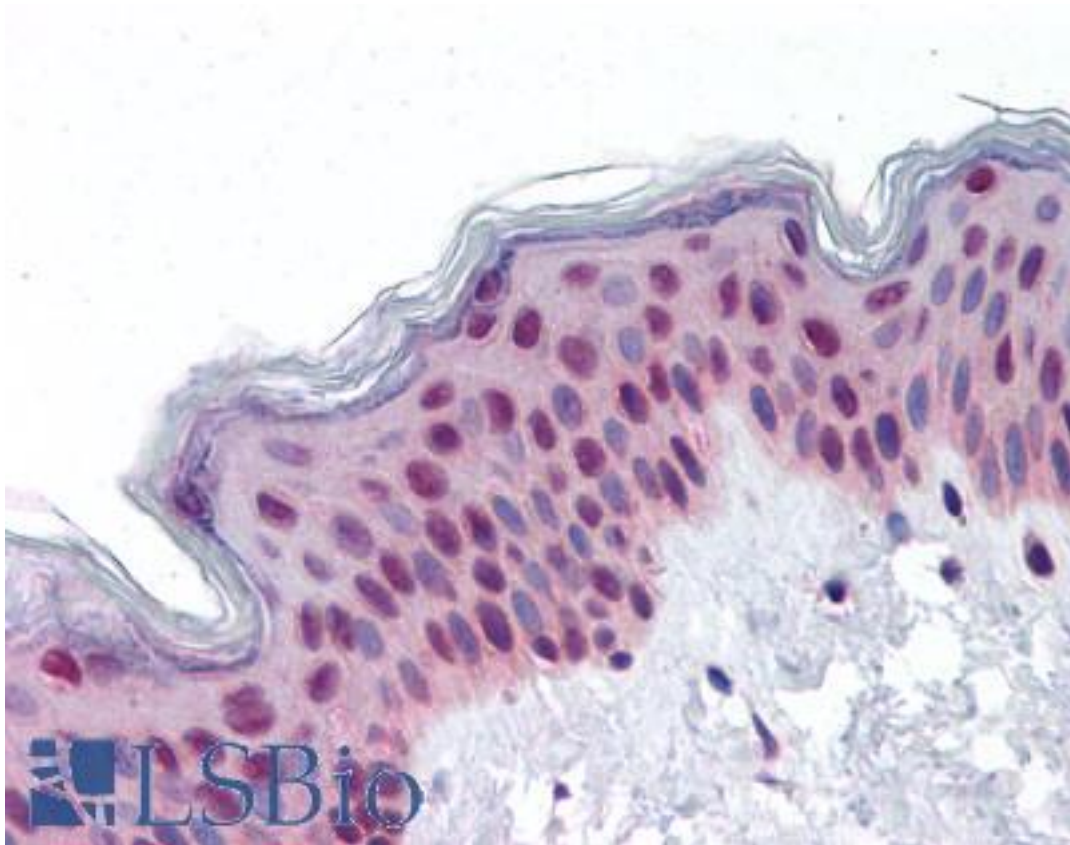
Anti-RUVBL2 antibody IHC of human testis. Immunohistochemistry of formalin-fixed, paraffin-embedded tissue after heat-induced antigen retrieval. Antibody LS-B4213 concentration 10 ug/ml.

**Immunohistochemistry Image:**



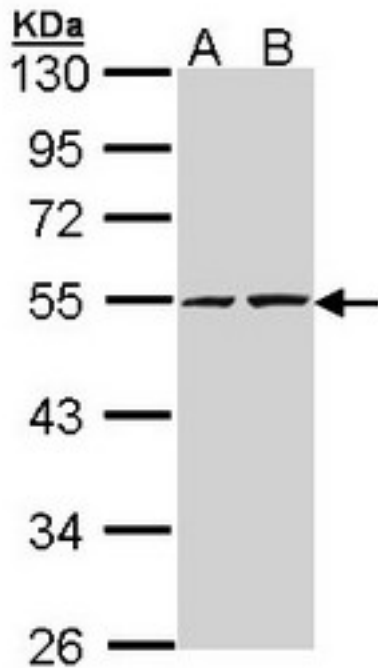
Anti-RUVBL2 antibody IHC of human uterus. Immunohistochemistry of formalin-fixed, paraffin-embedded tissue after heat-induced antigen retrieval. Antibody LS-B4213 concentration 10 ug/ml.

**Immunohistochemistry Image:**



Anti-RUVBL2 antibody IHC of human skin. Immunohistochemistry of formalin-fixed, paraffin-embedded tissue after heat-induced antigen retrieval. Antibody LS-B4213 concentration 10 ug/ml.

**Western Blot Image:**



Sample (30 ug of whole cell lysate). A: A431. B: H1299. 10% SDS PAGE. RUVBL2 antibody diluted at 1:5000.

**Requested From:**

Japan

Laboratory Reagent For In Vitro Research Use Only

Not for resale without prior written consent from LifeSpan BioSciences, Inc.

Created on 9/23/2014

© 2014 LifeSpan BioSciences