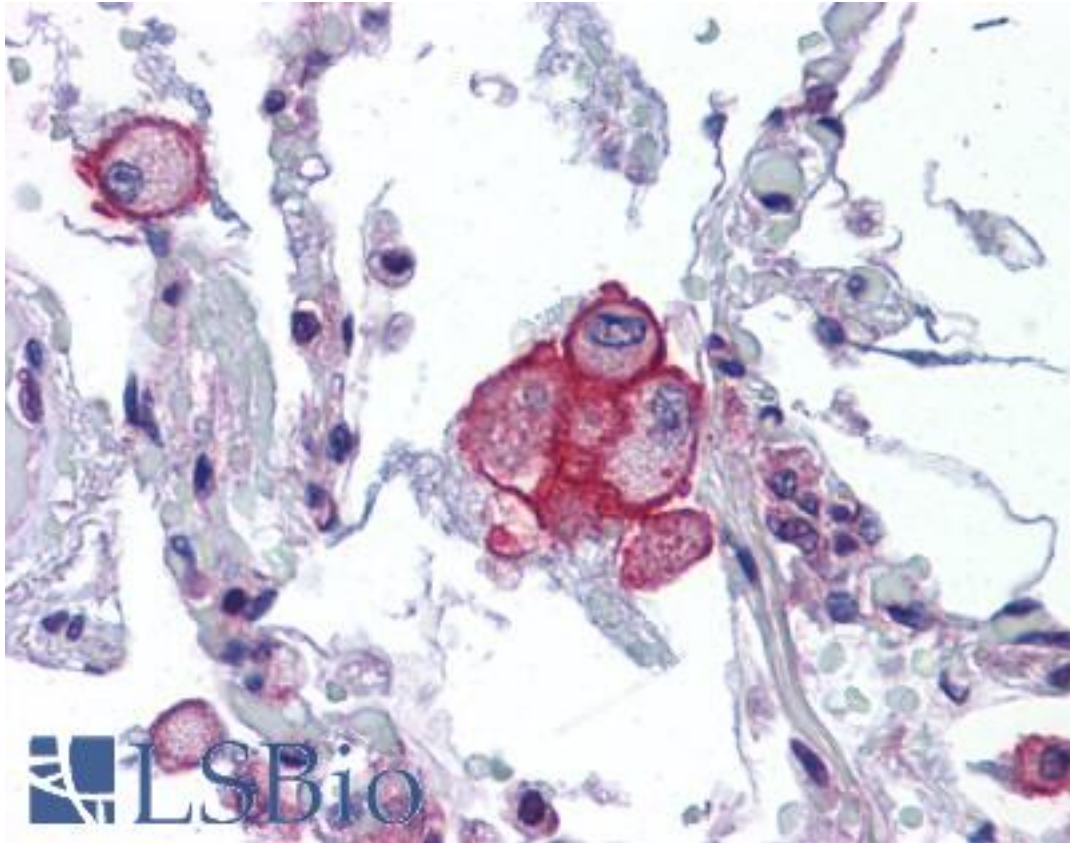


VRL1 / TRPV2 Rabbit anti-Human Polyclonal Antibody - LS-B4211 - LSBio

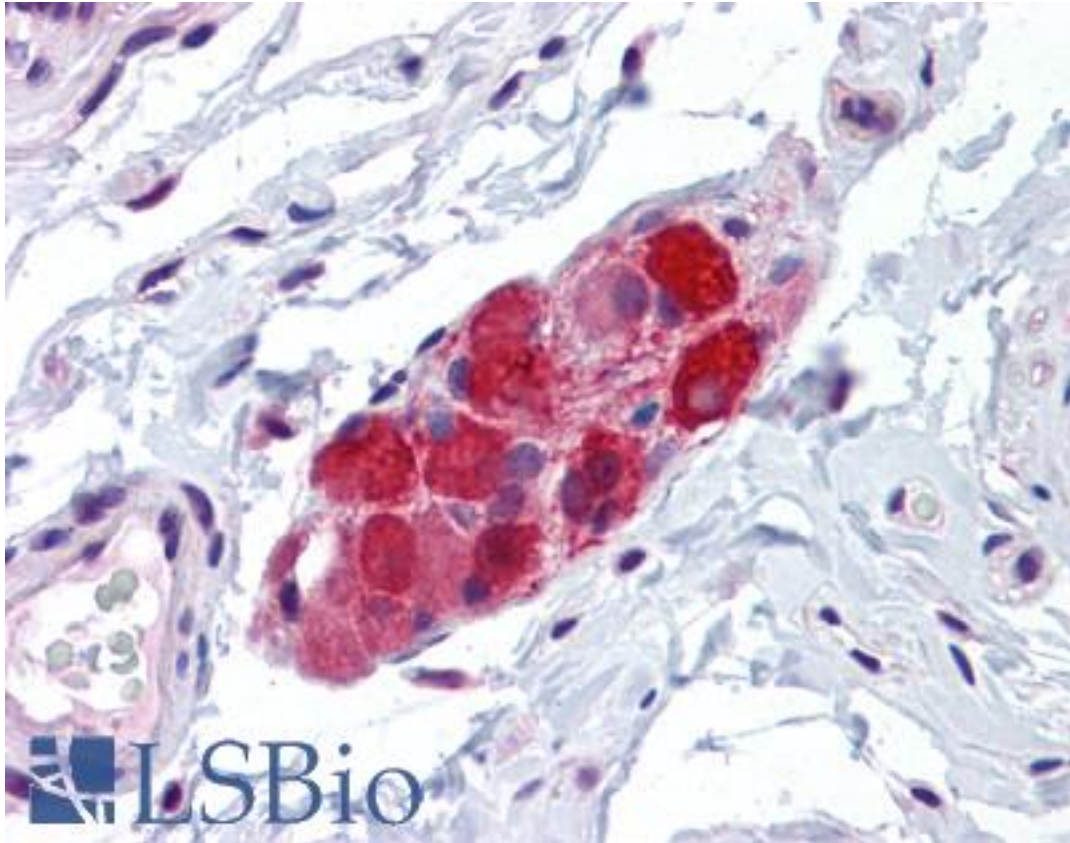
CatalogID:	LS-B4211
Validation:	This antibody replaces catalog number LS-C109350. It has been validated for use in the following assays: IHC-P.
Target:	transient receptor potential cation channel, subfamily V, member 2 (TRPV2)
Synonyms:	TRPV2 Antibody, GRC Antibody, OTRPC2 Antibody, Osm-9-like TRP channel 2 Antibody, VRL-1 Antibody, VRL1 Antibody, VRL Antibody
Family / Subfamily:	Ion Channel / Calcium channel - TRP
Host	TRPV2 antibody was produced in Rabbit
Clonality:	Polyclonal
Immunogen Species:	VRL1 / TRPV2 antibody was raised against Human
Immunogen:	VRL1 / TRPV2 antibody was raised against recombinant protein fragment containing a sequence corresponding to a region within amino acids 595 and 764 of VRL1.
Specificity:	Human and mouse VRL1.
Reactivity:	Human, Mouse
Purification:	Immunoaffinity purified
Presentation:	0.1 M Tris-glycine, pH 7, 10% Glycerol, 0.01% Thimerosal
Recommended Storage:	Aliquot and store at -20°C. Minimize freezing and thawing.
Uses:	IHC - Paraffin (10 µg/ml), Western blot (1:500 - 1:3000) (Optimal dilution to be determined by the researcher)
Size:	50 µl
Concentration:	0.71 mg/ml

Immunohistochemistry Image:



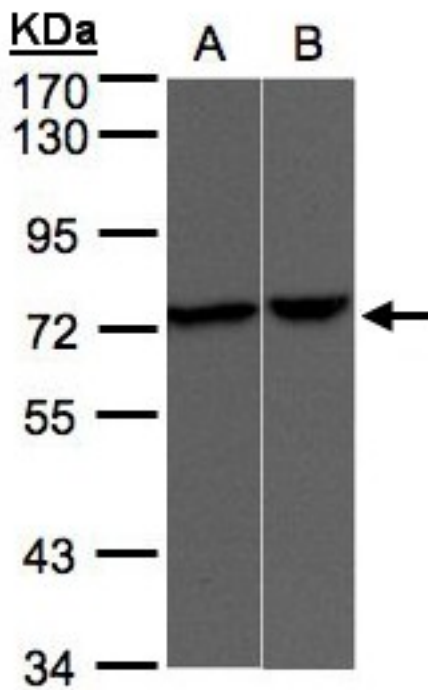
Anti-TRPV2 antibody IHC of human lung. Immunohistochemistry of formalin-fixed, paraffin-embedded tissue after heat-induced antigen retrieval. Antibody LS-B4211 concentration 10 ug/ml.

Immunohistochemistry Image:



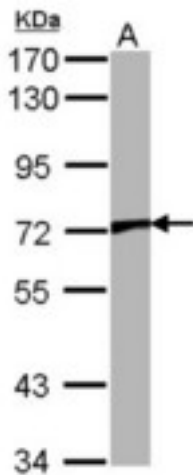
Anti-TRPV2 antibody IHC of human small intestine, submucosal plexus.
Immunohistochemistry of formalin-fixed, paraffin-embedded tissue after heat-induced antigen retrieval. Antibody LS-B4211 concentration 10 ug/ml.

Western Blot Image:



Sample(30 g of whole cell lysate). A: A431. B: Raji. 7.5% SDS PAGE. TRPV2 antibody diluted at 1:500.

Western Blot Image:



Sample (30 ug of whole cell lysate). A: NIH-3T3. 7.5% SDS PAGE. VRL1 antibody. TRPV2 antibody diluted at 1:1000.

Requested From:

Japan

Laboratory Reagent For In Vitro Research Use Only

Not for resale without prior written consent from LifeSpan BioSciences, Inc.

Created on 9/23/2014

© 2014 LifeSpan BioSciences