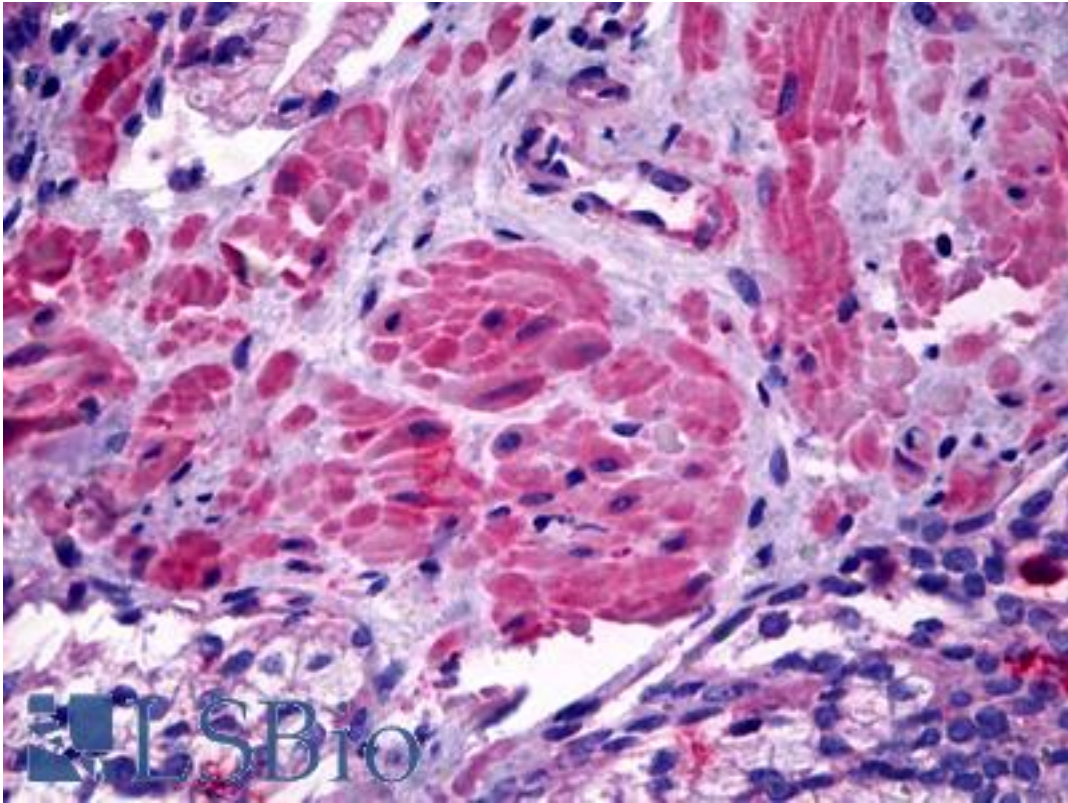


ACTG1 / Gamma Actin Rabbit anti-Human Polyclonal Antibody - LS-B4209 - LSBio

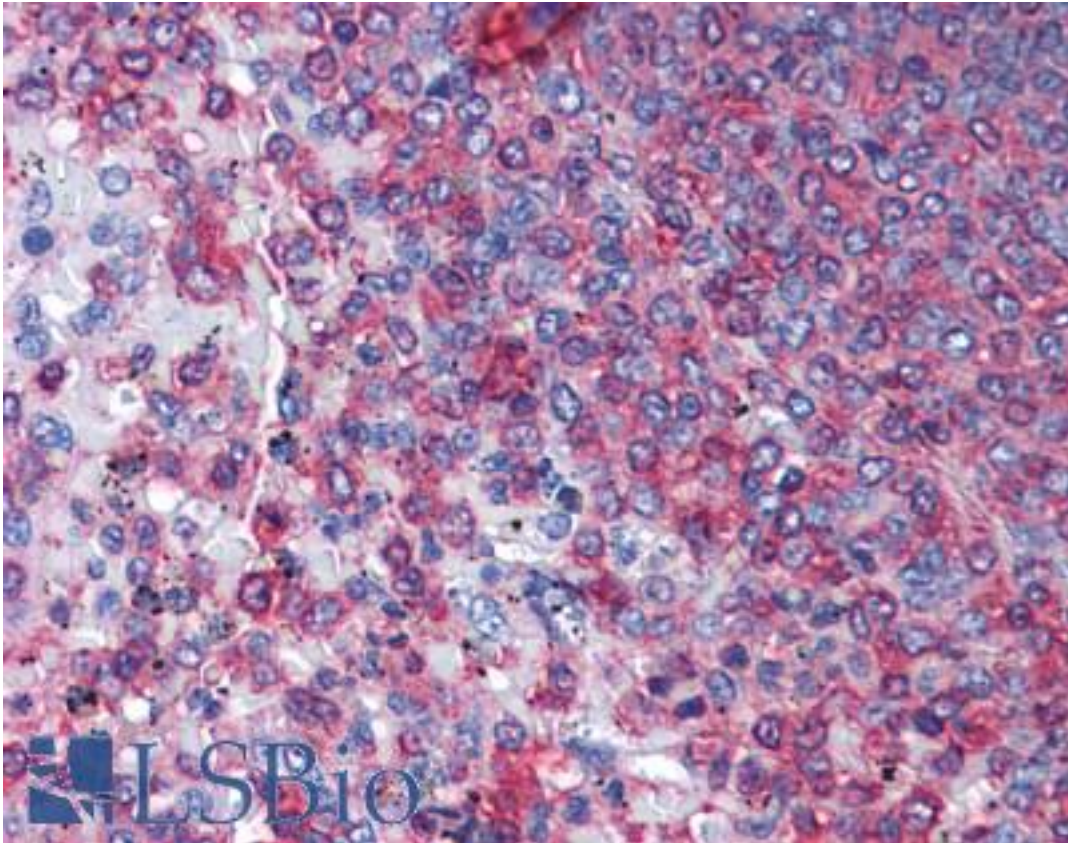
CatalogID:	LS-B4209
Validation:	This antibody replaces catalog number LS-C109275. It has been validated for use in the following assays: IHC-P.
Target:	actin, gamma 1 (ACTG1)
Synonyms:	ACTG1 Antibody, ACTG Antibody, Actin, gamma 1 Antibody, BRWS2 Antibody, Cytoskeletal gamma-actin Antibody, DFNA20 Antibody, Actin, cytoplasmic 2 Antibody, Gamma-actin Antibody, DFNA26 Antibody
Host	ACTG1 antibody was produced in Rabbit
Clonality:	Polyclonal
Immunogen Species:	ACTG1 / Gamma Actin antibody was raised against Human
Immunogen:	ACTG1 / Gamma Actin antibody was raised against recombinant protein fragment containing a sequence corresponding to a region within amino acids 1 and 119 of Human gamma-Actin.
Specificity:	Human gamma Actin. Predicted cross-reactivity based on amino acid sequence homology: zebrafish (100%), monkey (100%).
Reactivity:	Human
Purification:	Immunoaffinity purified
Presentation:	PBS, pH 7, 10% Glycerol, 0.01% Thimerosal
Recommended Storage:	Short term 4°C, long term aliquot and store at -20°C, avoid freeze thaw cycles.
Uses:	IHC - Paraffin (10 µg/ml), Western blot (1:500 - 1:3000) (Optimal dilution to be determined by the researcher)
Size:	50 µl

Immunohistochemistry Image:



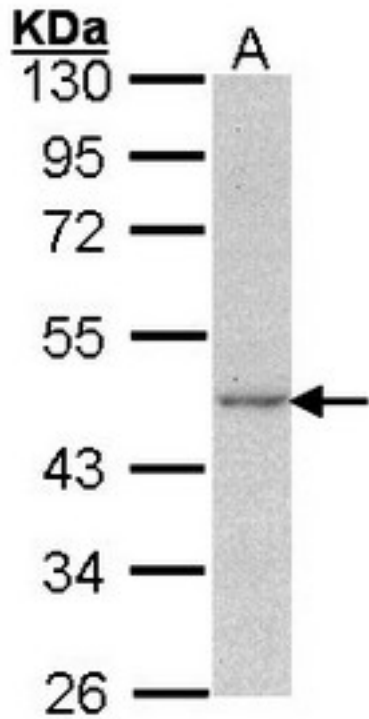
Anti-ACTG1 / Gamma-Actin antibody IHC of human prostate, smooth muscle.
Immunohistochemistry of formalin-fixed, paraffin-embedded tissue after heat-induced antigen retrieval. Antibody LS-B4209 concentration 10 ug/ml.

Immunohistochemistry Image:



Anti-ACTG1 / Gamma-Actin antibody IHC of human spleen. Immunohistochemistry of formalin-fixed, paraffin-embedded tissue after heat-induced antigen retrieval. Antibody LS-B4209 concentration 10 ug/ml.

Western Blot Image:



Sample (30 ug of whole cell lysate). A: A431. 10% SDS PAGE. ACTG1 antibody diluted at 1:1000.

Requested From:

Japan

Laboratory Reagent For In Vitro Research Use Only

Not for resale without prior written consent from LifeSpan BioSciences, Inc.

Created on 9/23/2014

© 2014 LifeSpan BioSciences