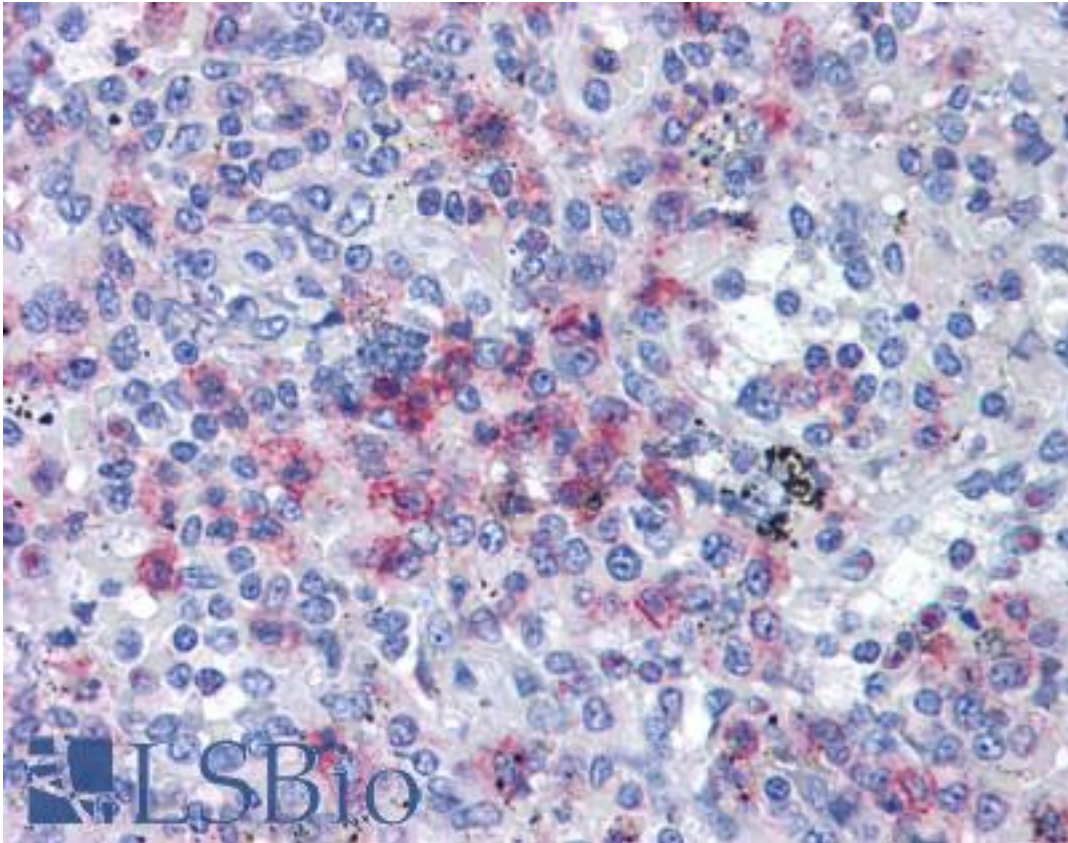


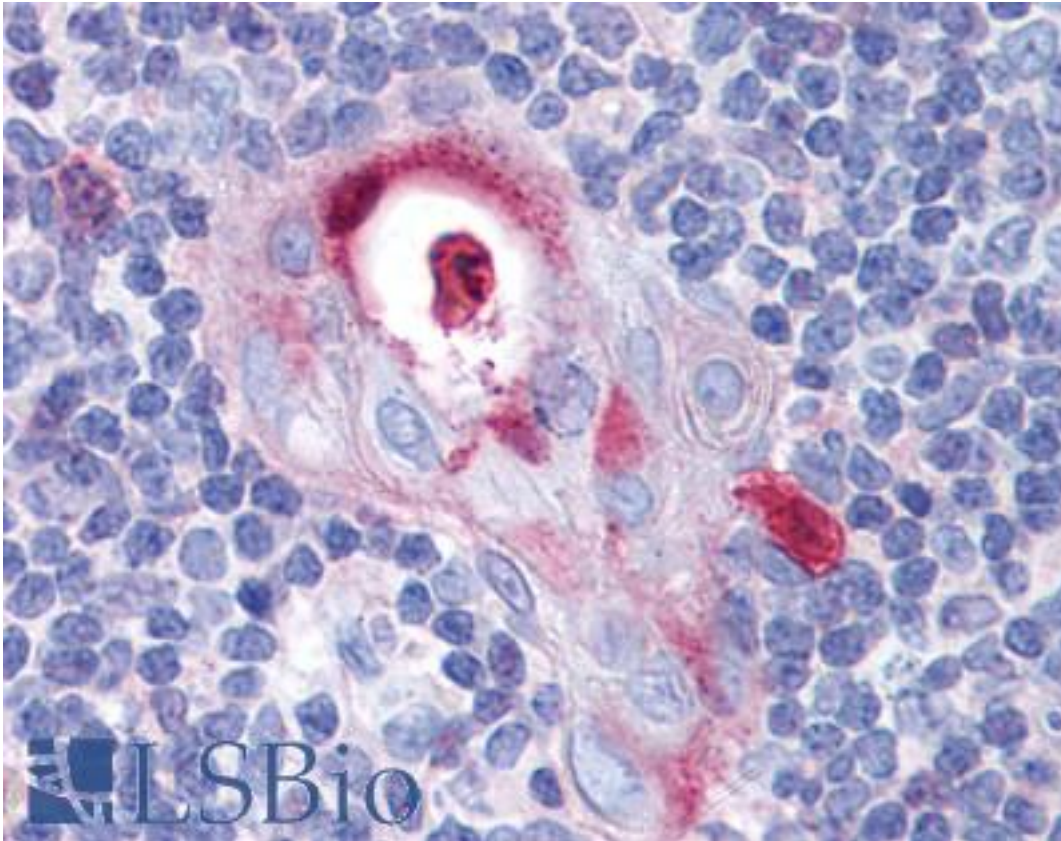
SPI1 / PU.1 Rabbit anti-Human Polyclonal Antibody - LS-B4206 - LSBio	
<b>CatalogID:</b>	LS-B4206
<b>Validation:</b>	This antibody replaces catalog number LS-C109346. It has been validated for use in the following assays: IHC-P.
<b>Target:</b>	spleen focus forming virus (SFFV) proviral integration oncogene (SPI1)
<b>Synonyms:</b>	SPI1 Antibody, 31 kDa-transforming protein Antibody, 31 kDa transforming protein Antibody, PU.1 Antibody, SFPI1 Antibody, SPI-1 Antibody, SPI-1 proto-oncogene Antibody, SPI-A Antibody, Transcription factor PU.1 Antibody
<b>Host</b>	SPI1 antibody was produced in Rabbit
<b>Clonality:</b>	Polyclonal
<b>Immunogen Species:</b>	SPI1 / PU.1 antibody was raised against Human
<b>Immunogen:</b>	SPI1 / PU.1 antibody was raised against recombinant protein fragment containing a sequence corresponding to a region within amino acids 1 and 122 of Human PU.1.
<b>Specificity:</b>	Human SPI1. Predicted cross-reactivity based on amino acid sequence homology: rat (81%), pig (94%).
<b>Reactivity:</b>	Human
<b>Purification:</b>	Immunoaffinity purified
<b>Presentation:</b>	PBS, pH 7, 40% Glycerol, 0.01% Thimerosal
<b>Recommended Storage:</b>	Aliquot and store at -20°C. Minimize freezing and thawing.
<b>Uses:</b>	IHC - Paraffin (10 µg/ml), Western blot (1:500 - 1:3000) (Optimal dilution to be determined by the researcher)
<b>Size:</b>	50 µl
<b>Concentration:</b>	1 mg/ml

**Immunohistochemistry Image:**



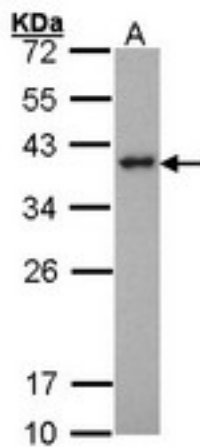
Anti-SPI1 / PU.1 antibody IHC of human spleen. Immunohistochemistry of formalin-fixed, paraffin-embedded tissue after heat-induced antigen retrieval. Antibody LS-B4206 concentration 10 ug/ml.

**Immunohistochemistry Image:**



Anti-SPI1 / PU.1 antibody IHC of human thymus. Immunohistochemistry of formalin-fixed, paraffin-embedded tissue after heat-induced antigen retrieval. Antibody LS-B4206 concentration 10 ug/ml.

**Western Blot Image:**



Sample (30 ug of whole cell lysate). A: HeLa. 12% SDS PAGE. SPI1 antibody diluted at 1:1000.

**Requested From:**

Japan

Laboratory Reagent For In Vitro Research Use Only

Not for resale without prior written consent from LifeSpan BioSciences, Inc.

Created on 9/23/2014

© 2014 LifeSpan BioSciences