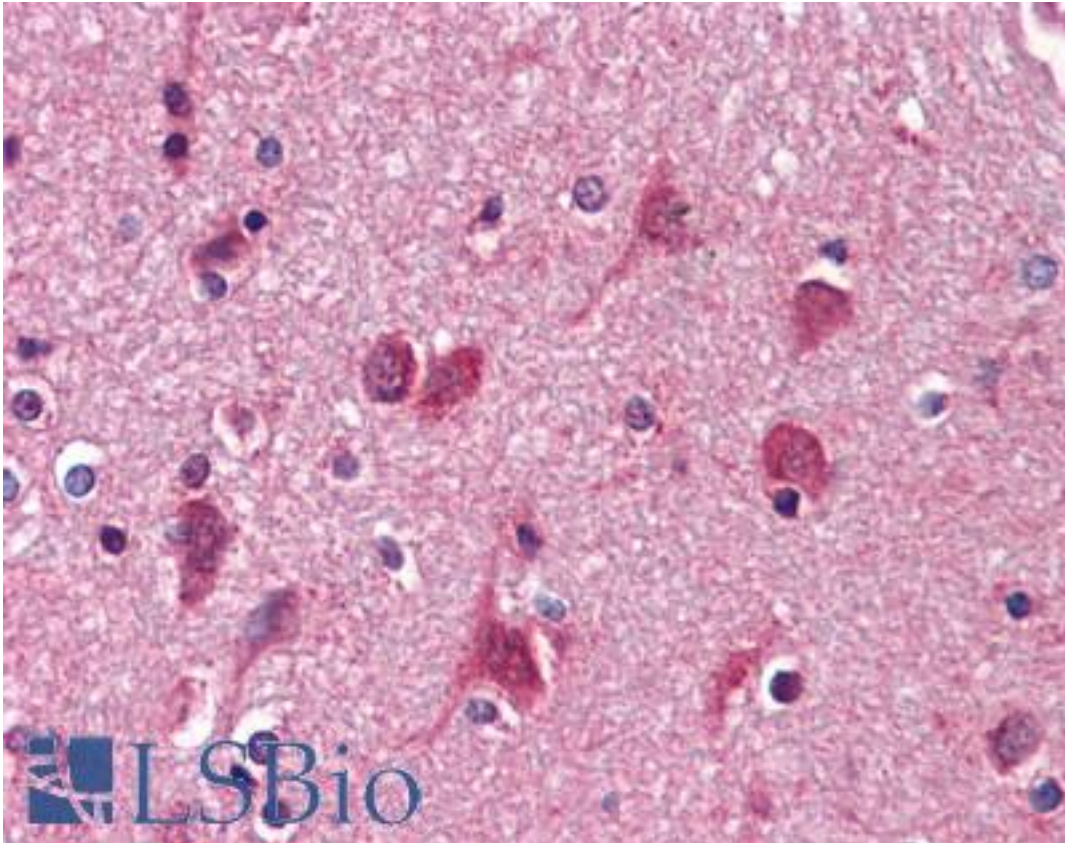


**AGPS Rabbit anti-Human Polyclonal Antibody - LS-B4204 - LSBio**

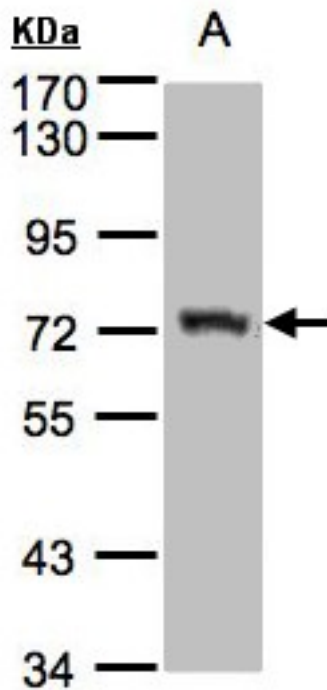
<b>CatalogID:</b>	LS-B4204
<b>Validation:</b>	This antibody replaces catalog number LS-C109343. It has been validated for use in the following assays: IHC-P.
<b>Target:</b>	alkylglycerone phosphate synthase (AGPS)
<b>Synonyms:</b>	AGPS Antibody, ALDHPSY Antibody, ADAP-S Antibody, ADPS Antibody, Alkyl-DHAP synthase Antibody, Aging-associated protein 5 Antibody, ADAS Antibody, ADHAPS Antibody
<b>Host</b>	AGPS antibody was produced in Rabbit
<b>Clonality:</b>	Polyclonal
<b>Immunogen Species:</b>	AGPS antibody was raised against Human
<b>Immunogen:</b>	AGPS antibody was raised against recombinant protein fragment containing a sequence corresponding to a region within amino acids 370 and 628 of Alkyl-DHAP synthase.
<b>Specificity:</b>	Human and mouse Alkyl-DHAP synthase. Predicted cross-reactivity based on amino acid sequence homology: mouse (95%), rat (94%), zebrafish (86%).
<b>Reactivity:</b>	Human, Mouse
<b>Purification:</b>	Immunoaffinity purified
<b>Presentation:</b>	PBS, pH 7, 40% Glycerol, 0.01% Thimerosal
<b>Recommended Storage:</b>	Aliquot and store at -20°C. Minimize freezing and thawing.
<b>Uses:</b>	IHC - Paraffin (10 µg/ml), Western blot (1:500 - 1:3000) (Optimal dilution to be determined by the researcher)
<b>Size:</b>	50 µl
<b>Concentration:</b>	1 mg/ml

**Immunohistochemistry Image:**



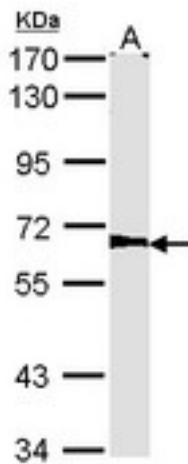
Anti-AGPS antibody IHC of human brain, cortex. Immunohistochemistry of formalin-fixed, paraffin-embedded tissue after heat-induced antigen retrieval. Antibody LS-B4204 concentration 10 ug/ml.

**Western Blot Image:**



Sample(30 g of whole cell lysate). A: Raji. 7.5% SDS PAGE. AGPS antibody diluted at 1:1500.

**Western Blot Image:**



Sample (30 ug of whole cell lysate). A: NIH-3T3. 7.5% SDS PAGE. Alkyl-DHAP synthase antibody. AGPS antibody diluted at 1:1000.

**Requested From:**

Japan

Laboratory Reagent For In Vitro Research Use Only

Not for resale without prior written consent from LifeSpan BioSciences, Inc.

Created on 9/23/2014

© 2014 LifeSpan BioSciences