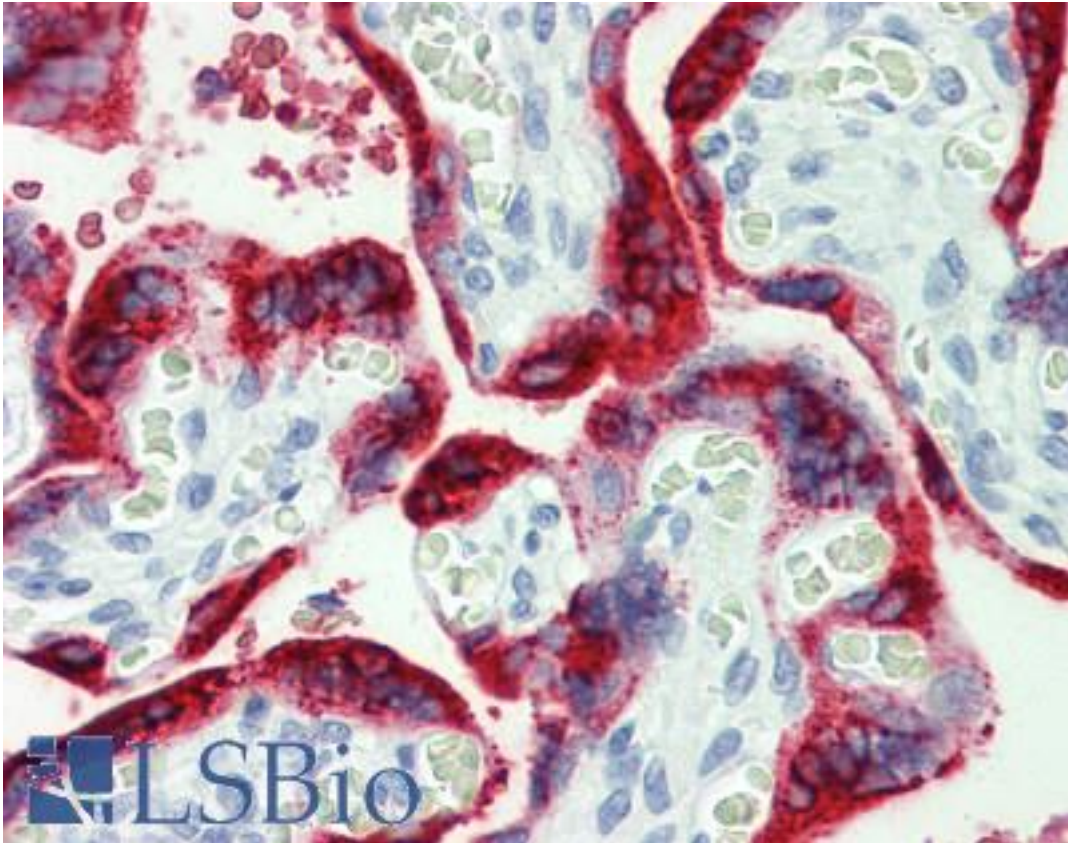


GH / Growth Hormone Rabbit anti-Human Polyclonal Antibody - LS-B4199 - LSBio

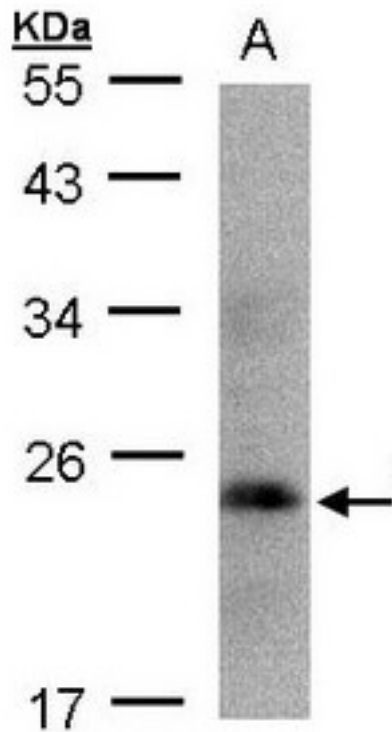
CatalogID:	LS-B4199
Validation:	This antibody replaces catalog number LS-C109338. It has been validated for use in the following assays: IHC-P.
Target:	growth hormone 1 (GH1)
Synonyms:	GH1 Antibody, Growth hormone Antibody, GH Antibody, GHN Antibody, IGHD1B Antibody, GH-N Antibody, Pituitary growth hormone Antibody, Growth hormone 1 Antibody, HGH-N Antibody, Somatotropin Antibody
Family / Subfamily:	Somatotropin
Host	GH1 antibody was produced in Rabbit
Clonality:	Polyclonal
Immunogen Species:	GH / Growth Hormone antibody was raised against Human
Immunogen:	GH / Growth Hormone antibody was raised against recombinant protein fragment containing a sequence corresponding to a region within amino acids 1 and 217 of Human Growth hormone.
Specificity:	Human GH1. Predicted cross-reactivity based on amino acid sequence homology: monkey (81%). Immunogen shares only 60% identity to mouse.
Reactivity:	Human
Purification:	Immunoaffinity purified
Presentation:	0.1 M Tris-glycine, pH 7, 10% Glycerol, 0.01% Thimerosal
Recommended Storage:	Aliquot and store at -20°C. Minimize freezing and thawing.
Uses:	IHC - Paraffin (10 µg/ml), Western blot (1:500 - 1:3000) (Optimal dilution to be determined by the researcher)
Size:	50 µl
Concentration:	1 mg/ml

Immunohistochemistry Image:



Anti-Growth Hormone antibody IHC of human placenta. Immunohistochemistry of formalin-fixed, paraffin-embedded tissue after heat-induced antigen retrieval. Antibody LS-B4199 concentration 10 ug/ml.

Western Blot Image:



Sample(30 ug whole cell lysate). A:293T. 12% SDS PAGE. GH1 antibody diluted at 1:1000

Requested From:

Japan

Laboratory Reagent For In Vitro Research Use Only

Not for resale without prior written consent from LifeSpan BioSciences, Inc.

Created on 9/23/2014

© 2014 LifeSpan BioSciences