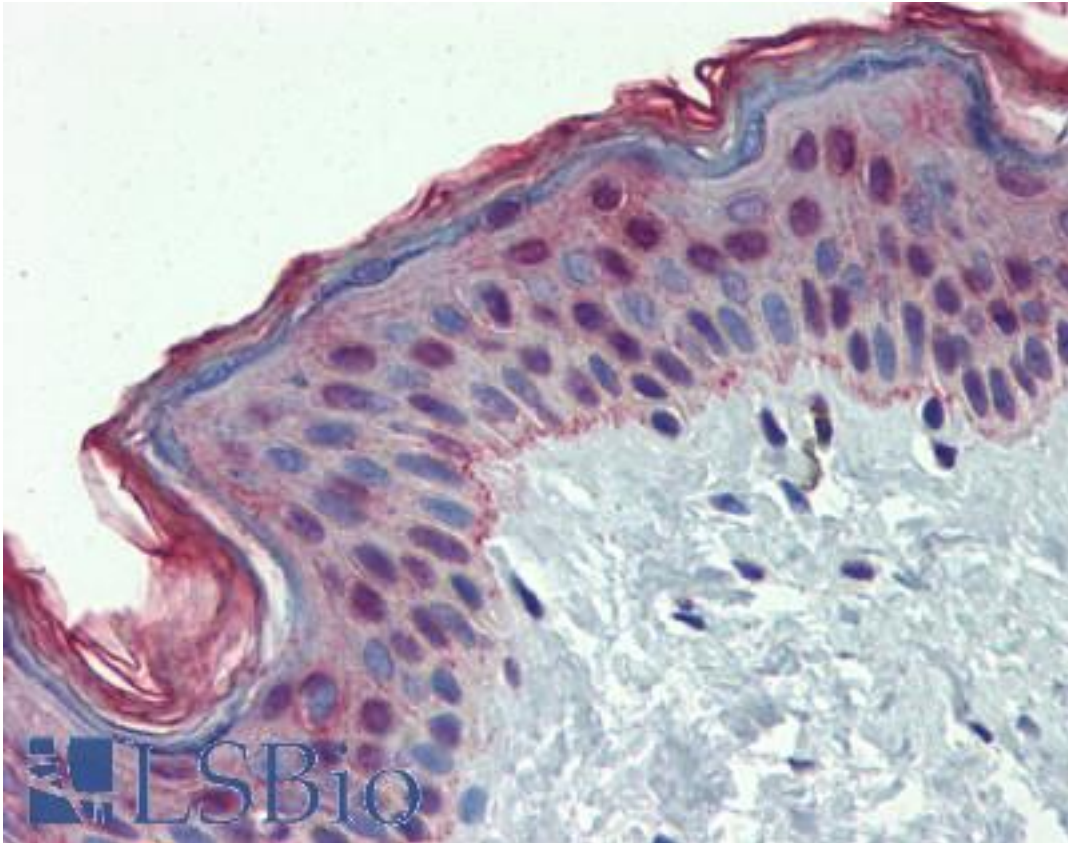


MMP3 / MMP-3 Rabbit anti-Human Polyclonal Antibody - LS-B4196 - LSBio

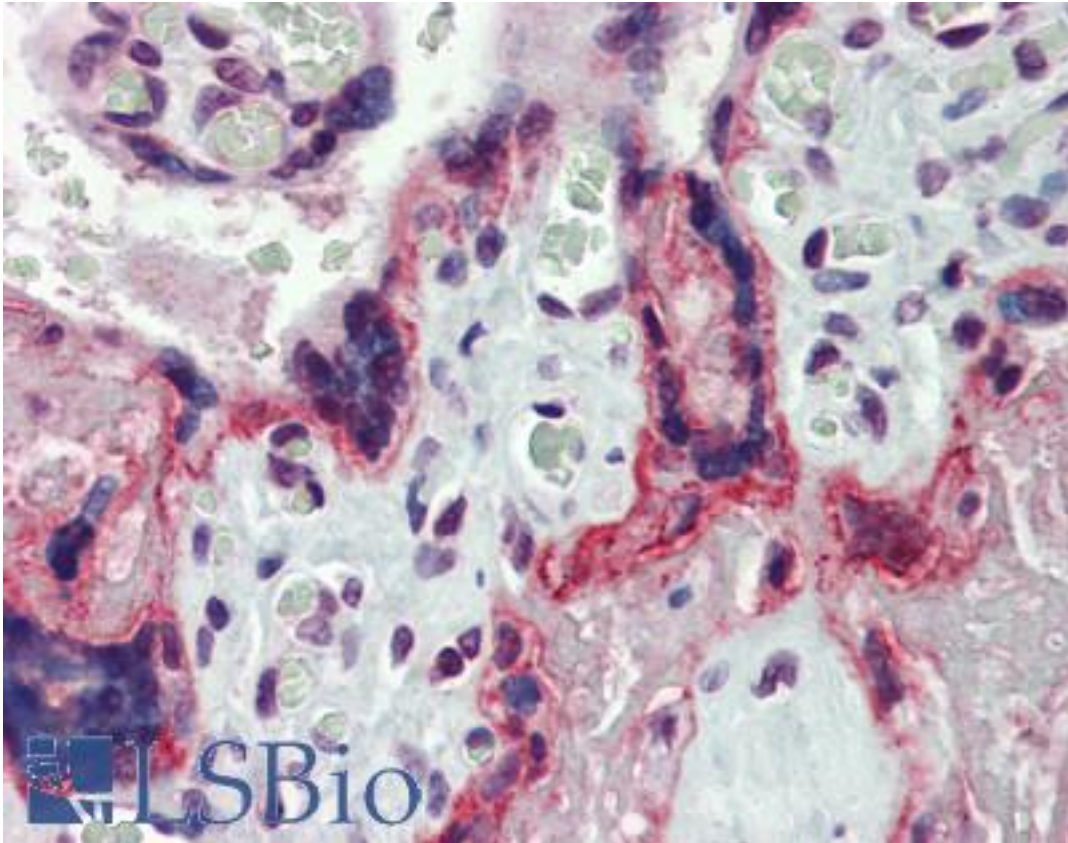
CatalogID:	LS-B4196
Validation:	This antibody replaces catalog number LS-C109324. It has been validated for use in the following assays: IHC-P.
Target:	matrix metalloproteinase 3 (stromelysin 1, progelatinase) (MMP3)
Synonyms:	MMP3 Antibody, CHDS6 Antibody, MMP-3 Antibody, Prostromelysin-1 Antibody, Proteoglycanase Antibody, SL-1 Antibody, STR1 Antibody, Matrix metalloproteinase-3 Antibody, Transin Antibody, Transin-1 Antibody, SLN-1 Antibody, STMY Antibody, Progelatinase Antibody, STMY1 Antibody, Stromelysin-1 Antibody
Family / Subfamily:	Protease / Metalloproteinase M10A
Host	MMP3 antibody was produced in Rabbit
Clonality:	Polyclonal
Immunogen Species:	MMP3 / MMP-3 antibody was raised against Human
Antigen Type:	Synthetic peptide
Immunogen:	MMP3 / MMP-3 antibody was raised against synthetic peptide containing a sequence corresponding to a region within amino acids 1 and 35 of MMP3.
Specificity:	Human MMP3.
Reactivity:	Human
Purification:	Immunoaffinity purified
Presentation:	0.1 M Tris-glycine, pH 7, 10% Glycerol, 0.01% Thimerosal
Recommended Storage:	Aliquot and store at -20°C. Minimize freezing and thawing.
Uses:	IHC - Paraffin (10 µg/ml), ICC, Immunofluorescence (1:100 - 1:200), Western blot (1:500 - 1:3000) (Optimal dilution to be determined by the researcher)
Size:	50 µl
Concentration:	0.73 mg/ml

Immunohistochemistry Image:



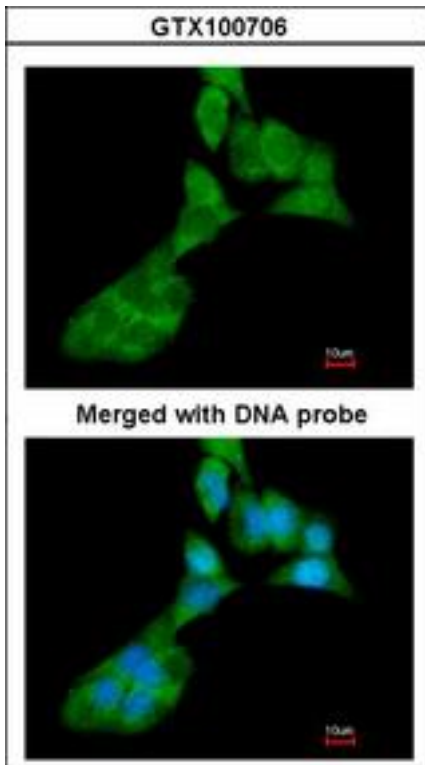
Anti-MMP3 antibody IHC of human skin. Immunohistochemistry of formalin-fixed, paraffin-embedded tissue after heat-induced antigen retrieval. Antibody LS-B4196 concentration 10 ug/ml.

Immunohistochemistry Image:



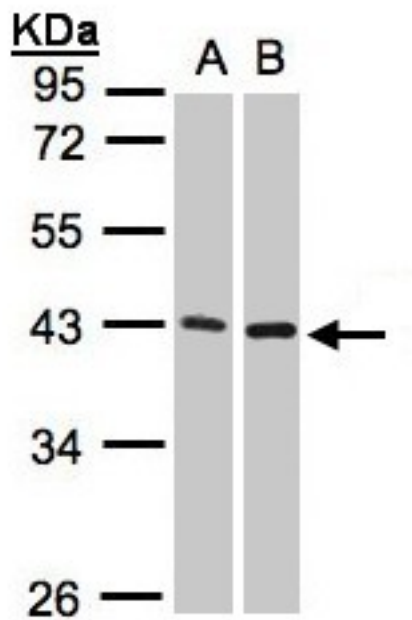
Anti-MMP3 antibody IHC of human placenta. Immunohistochemistry of formalin-fixed, paraffin-embedded tissue after heat-induced antigen retrieval. Antibody LS-B4196 concentration 10 ug/ml.

Immunofluorescence Image:



Immunofluorescence of paraformaldehyde-fixed A549, using MMP3 antibody at 1:200 dilution.

Western Blot Image:



Sample(30 ug whole cell lysate). A:293T. B: Raji. 10% SDS PAGE. MMP3 antibody diluted at 1:1000.

Requested From:

Japan

Laboratory Reagent For In Vitro Research Use Only

Not for resale without prior written consent from LifeSpan BioSciences, Inc.

Created on 9/23/2014

© 2014 LifeSpan BioSciences