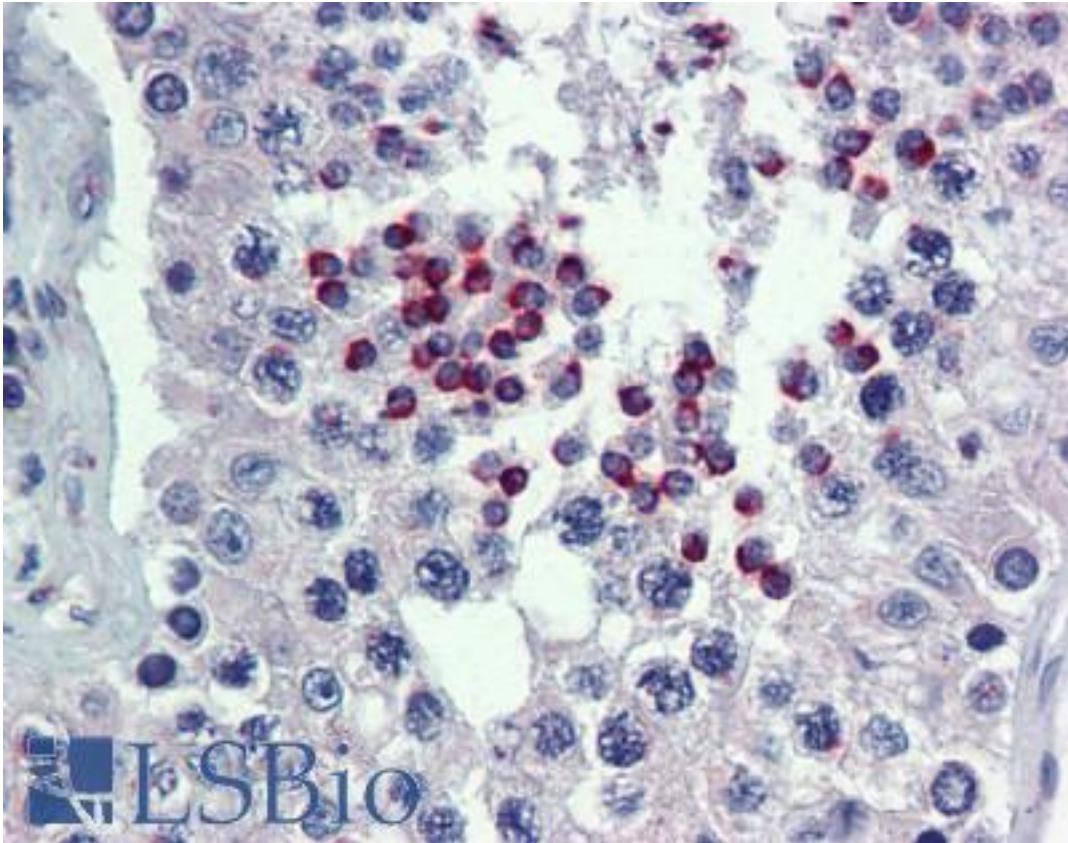


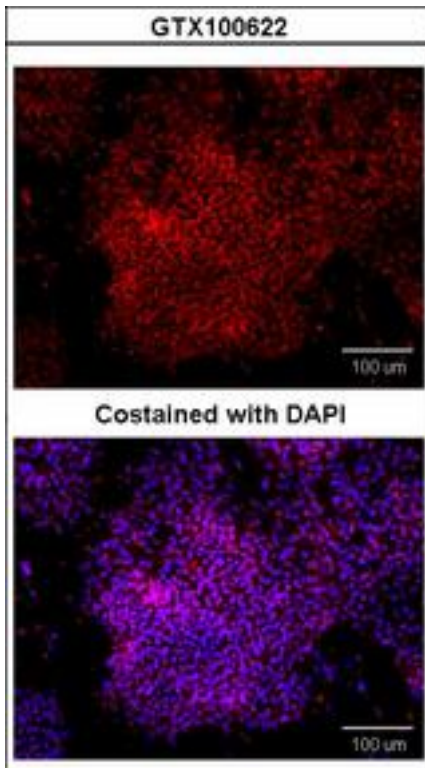
POU5F1 / OCT4 Rabbit anti-Human Polyclonal Antibody - LS-B4194 - LSBio	
CatalogID:	LS-B4194
Validation:	This antibody replaces catalog number LS-C109320. It has been validated for use in the following assays: IHC-P.
Target:	POU class 5 homeobox 1 (POU5F1)
Synonyms:	POU5F1 Antibody, Oct-4 Antibody, OCT3 Antibody, OCT4 Antibody, OTF4 Antibody, POU class 5 homeobox 1 Antibody, Octamer-binding protein 3 Antibody, Octamer-binding protein 4 Antibody, OTF-3 Antibody, Oct-3 Antibody, OTF3 Antibody
Host	POU5F1 antibody was produced in Rabbit
Clonality:	Polyclonal
Immunogen Species:	POU5F1 / OCT4 antibody was raised against Human
Immunogen:	POU5F1 / OCT4 antibody was raised against recombinant protein fragment containing a sequence corresponding to a region within amino acids 6 and 152 of OCT3/4.
Specificity:	Human OCT3/4. Predicted cross-reactivity based on amino acid sequence homology: rabbit (85%), bovine (85%), pig (88%), monkey (97%).
Reactivity:	Human
Purification:	Immunoaffinity purified
Presentation:	PBS, pH 7, 10% Glycerol, 0.01% Thimerosal
Recommended Storage:	Aliquot and store at -20°C. Minimize freezing and thawing.
Uses:	IHC - Paraffin (10 µg/ml), ICC (1:100 - 1:200), Immunofluorescence (1:100 - 1:200), Western blot (1:500 - 1:3000), Flow Cytometry (Optimal dilution to be determined by the researcher)
Size:	50 µl

Immunohistochemistry Image:



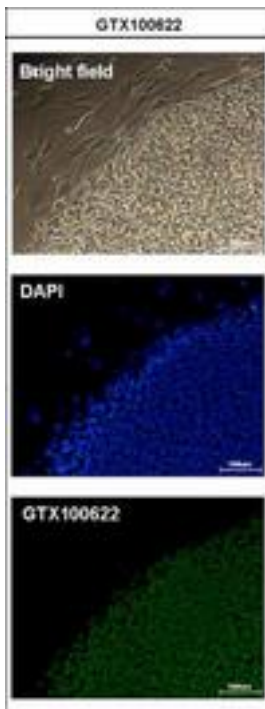
Anti-POU5F1 / OCT4 antibody IHC of human testis. Immunohistochemistry of formalin-fixed, paraffin-embedded tissue after heat-induced antigen retrieval. Antibody LS-B4194 concentration 10 ug/ml.

Immunofluorescence Image:



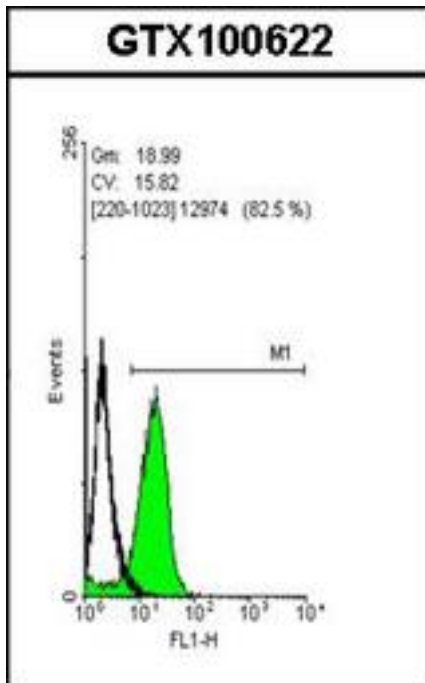
Immunofluorescence of paraformaldehyde-fixed human embryonic stem cell, using OCT3/4 antibody at 1:100 dilution.

Immunofluorescence Image:



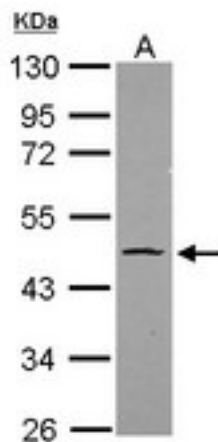
Immunofluorescence of paraformaldehyde-fixed human embryonic stem cell, using OCT3/4 antibody at 1:200 dilution.

Flow Cytometry Image:



Flow cytometry on human embryonic stem cells, staining with OCT3/4 antibody at 1:50 dilution (green) or rabbit IgG (black).

Western Blot Image:



Sample (20 ug). A: HeLa nucleus. 10% SDS PAGE. POU5F1 antibody diluted at 1:1000.

Requested From:

Japan

Laboratory Reagent For In Vitro Research Use Only

Not for resale without prior written consent from LifeSpan BioSciences, Inc.

Created on 9/23/2014

© 2014 LifeSpan BioSciences