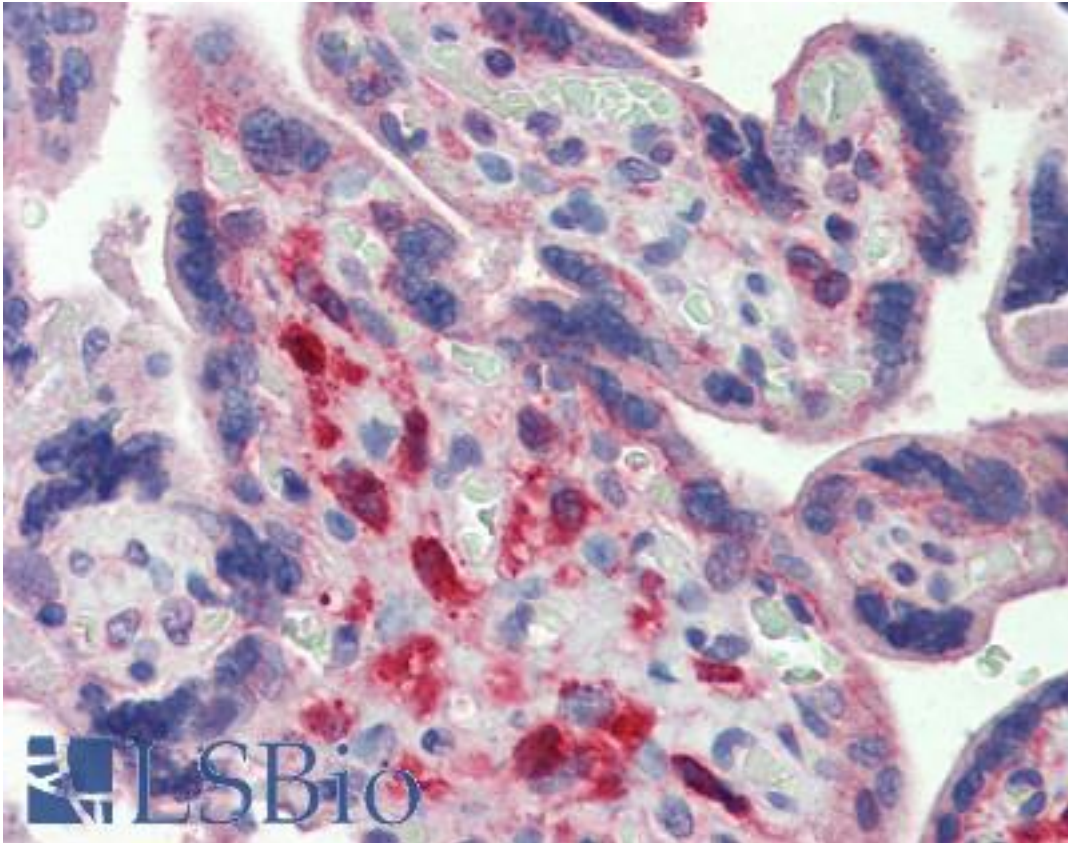


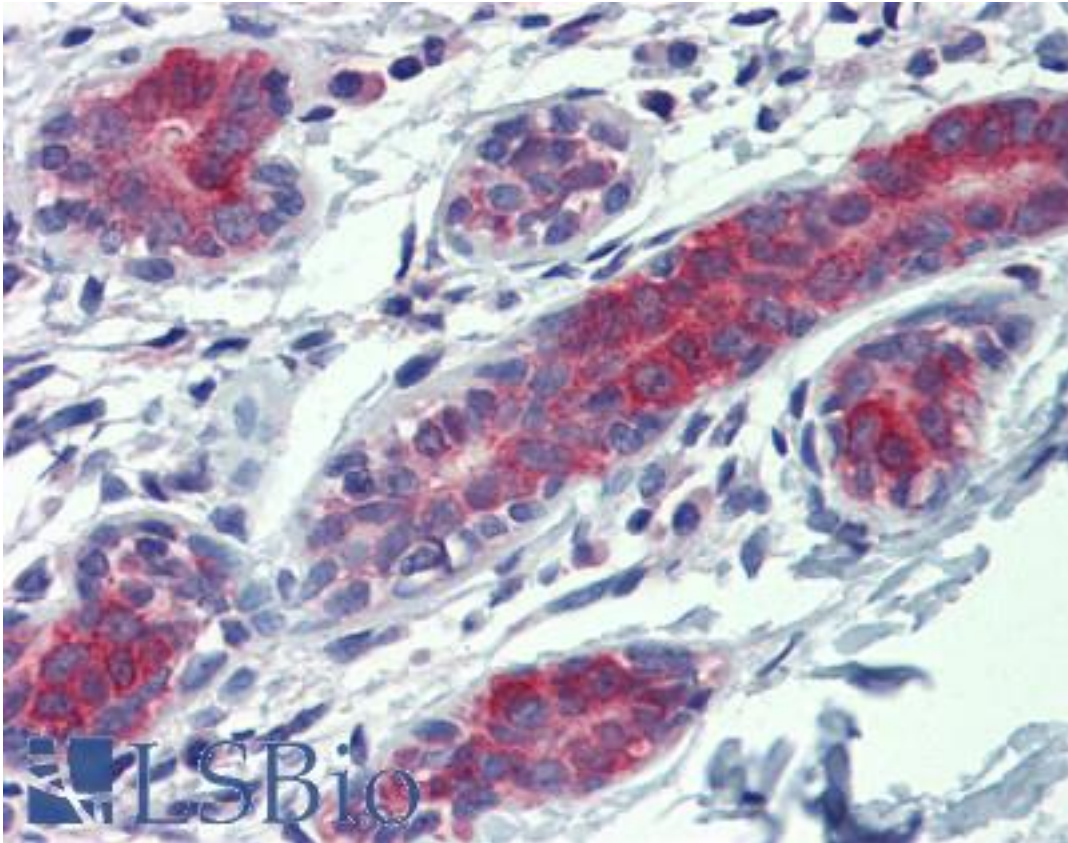
YES1 / c-Yes Rabbit anti-Human Polyclonal Antibody - LS-B4193 - LSBio	
<b>CatalogID:</b>	LS-B4193
<b>Validation:</b>	This antibody replaces catalog number LS-C109319. It has been validated for use in the following assays: IHC-P.
<b>Target:</b>	v-yes-1 Yamaguchi sarcoma viral oncogene homolog 1 (YES1)
<b>Synonyms:</b>	YES1 Antibody, C-yes Antibody, Cyes Antibody, Cellular yes-1 protein Antibody, HsT441 Antibody, Oncogene kinase yes1 Antibody, p61-YES Antibody, p61yes Antibody, p62c-yes Antibody, Proto-oncogene c-Yes Antibody, Tyrosine-protein kinase Yes Antibody, Yes kinase Antibody, v-yes Antibody, Yes Antibody, Yamaguchi sarcoma oncogene Antibody
<b>Family / Subfamily:</b>	Protein Kinase / Src
<b>Host</b>	YES1 antibody was produced in Rabbit
<b>Clonality:</b>	Polyclonal
<b>Immunogen Species:</b>	YES1 / c-Yes antibody was raised against Human
<b>Immunogen:</b>	YES1 / c-Yes antibody was raised against recombinant protein fragment containing a sequence corresponding to a region within amino acids 284 and 541 of c-Yes.
<b>Specificity:</b>	Human and mouse c-Yes. Predicted cross-reactivity based on amino acid sequence homology: rat (88%), bovine (89%), dogs (98%), zebrafish (95%).
<b>Reactivity:</b>	Human, Mouse
<b>Purification:</b>	Immunoaffinity purified
<b>Presentation:</b>	PBS, pH 7, 1% BSA, 20% Glycerol, 0.01% Thimerosal
<b>Recommended Storage:</b>	Aliquot and store at -20°C. Minimize freezing and thawing.
<b>Uses:</b>	IHC - Paraffin (10 µg/ml), ICC, Immunofluorescence (1:100 - 1:200), Western blot (1:500 - 1:3000) (Optimal dilution to be determined by the researcher)
<b>Size:</b>	50 µl
<b>Concentration:</b>	1 mg/ml

**Immunohistochemistry Image:**



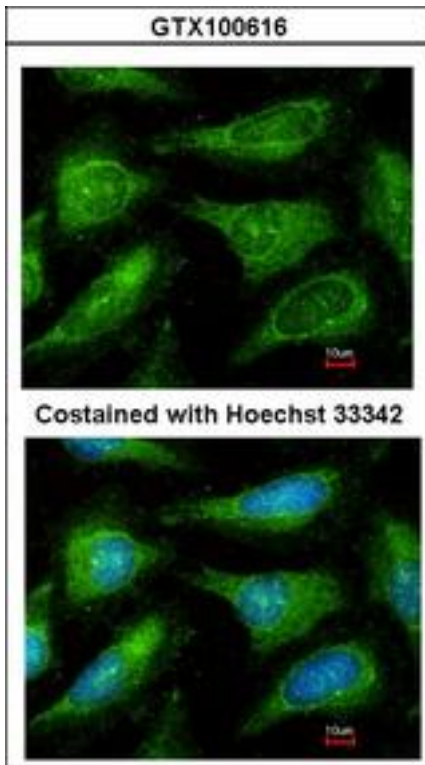
Anti-YES1 antibody IHC of human placenta. Immunohistochemistry of formalin-fixed, paraffin-embedded tissue after heat-induced antigen retrieval. Antibody LS-B4193 concentration 10 ug/ml.

**Immunohistochemistry Image:**



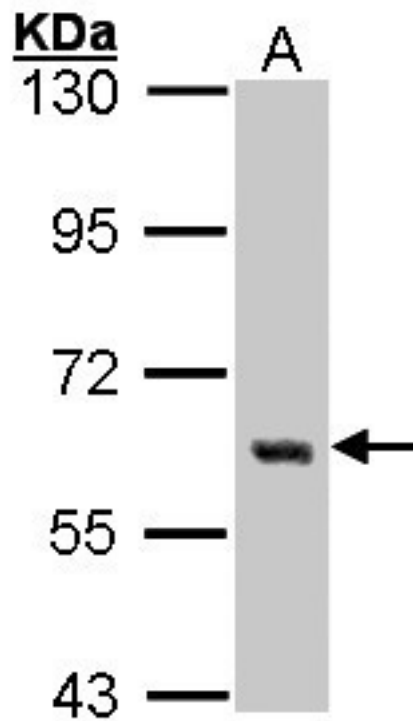
Anti-YES1 antibody IHC of human breast. Immunohistochemistry of formalin-fixed, paraffin-embedded tissue after heat-induced antigen retrieval. Antibody LS-B4193 concentration 10 ug/ml.

**Immunofluorescence Image:**



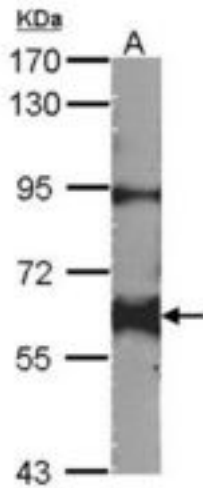
Immunofluorescence of methanol-fixed HeLa, using c-Yes antibody at 1:200 dilution.

**Western Blot Image:**



Sample (30 µg of whole cell lysate). A: A431. 7.5% SDS PAGE. YES1 antibody diluted at 1:1000.

**Western Blot Image:**



Sample (30 ug of whole cell lysate). A: NIH-3T3. 7.5% SDS PAGE. YES1 antibody diluted at 1:1000.

**Requested From:**

Japan

Laboratory Reagent For In Vitro Research Use Only

Not for resale without prior written consent from LifeSpan BioSciences, Inc.

Created on 9/23/2014

© 2014 LifeSpan BioSciences