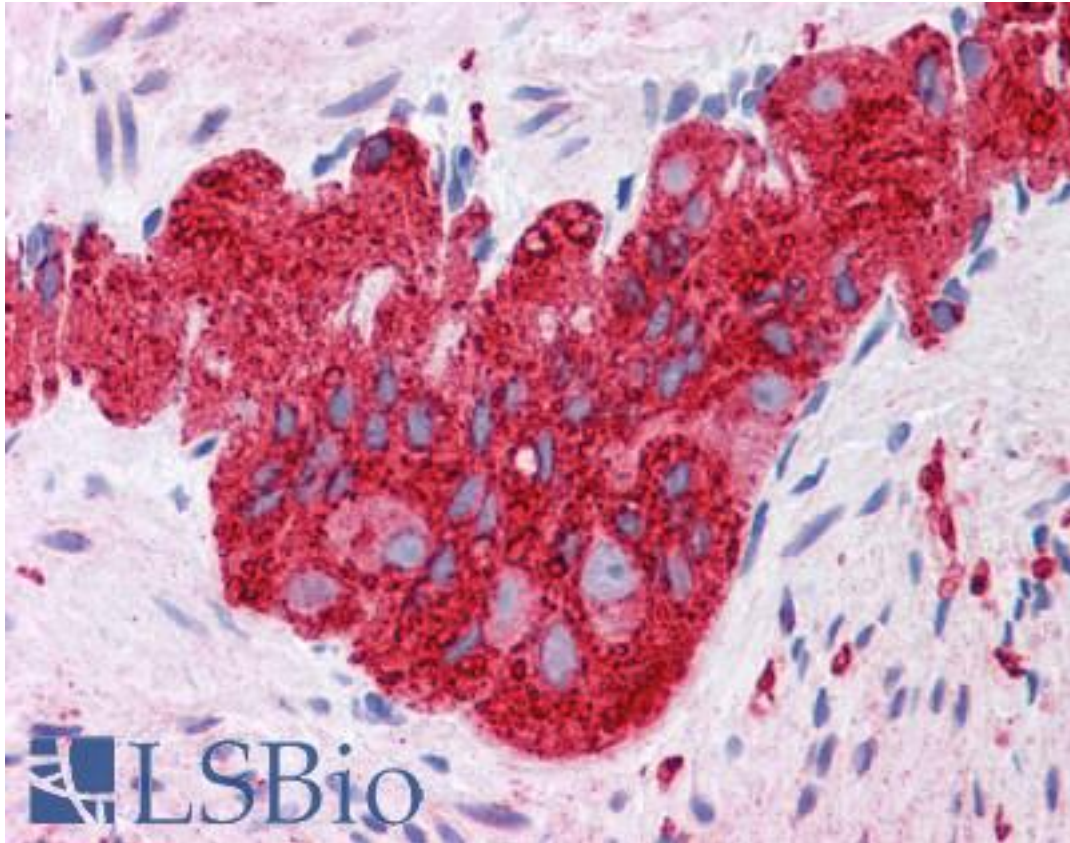


TUBB2B Mouse anti-Human Monoclonal (AT5B3) Antibody - LS-B4190 - LSBio

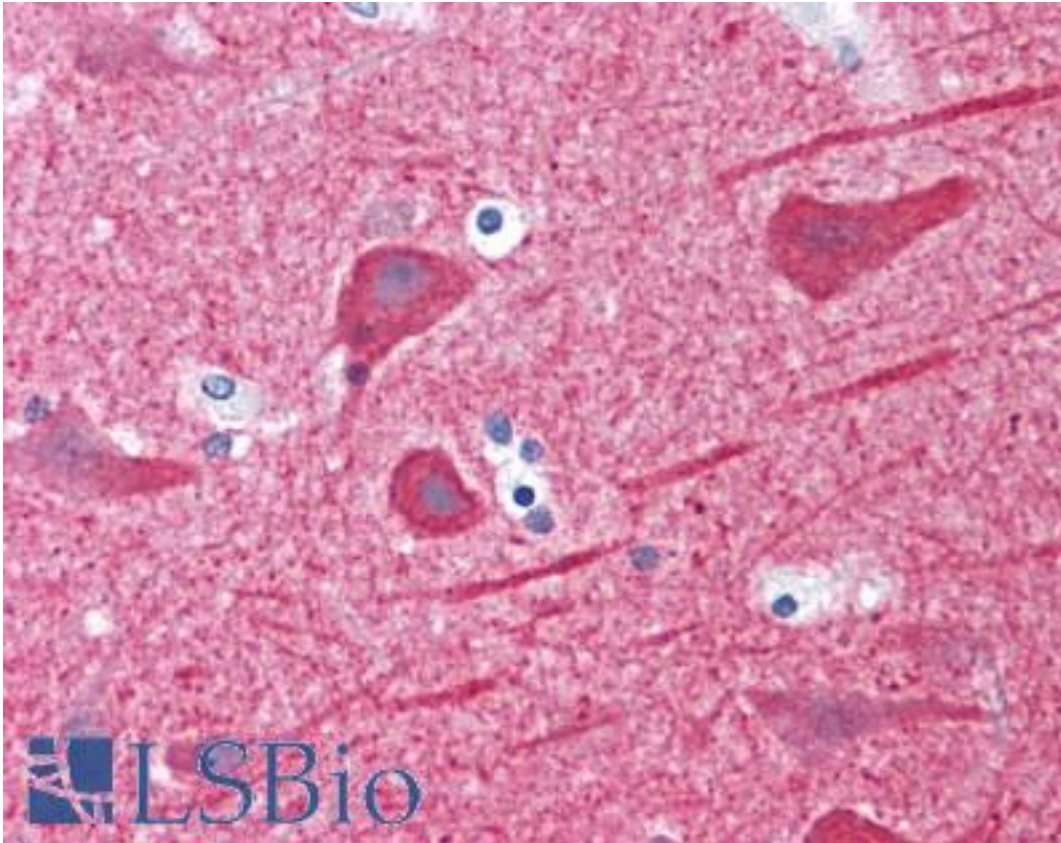
CatalogID:	LS-B4190
Validation:	This antibody replaces catalog number LS-C113062. It has been validated for use in the following assays: IHC-P.
Target:	tubulin, beta 2B class IIb (TUBB2B)
Synonyms:	TUBB2B Antibody, BA506K6.1 Antibody, Class IIb beta-tubulin Antibody, PMGYSA Antibody, RP11-506K6.1 Antibody, Tubulin, beta 2B Antibody, Class II beta-tubulin isotype Antibody, Tubulin beta-2B chain Antibody, Tubulin, beta 2B class IIb Antibody
Host	TUBB2B antibody was produced in Mouse
Clonality:	Monoclonal
Isotype:	Ig2a,k
Clone Name:	AT5B3
Immunogen Species:	TUBB2B antibody was raised against Human
Immunogen:	TUBB2B antibody was raised against recombinant human TUBB2b (aa1-445) purified from E. coli
Reactivity:	Human
Purification:	Protein G purified
Presentation:	Phosphate buffered saline, pH 7.4, 0.1% sodium azide
Recommended Storage:	Short term 4°C, long term aliquot and store at -20°C, avoid freeze thaw cycles. Store undiluted.
Uses:	IHC - Paraffin (5 µg/ml) (Optimal dilution to be determined by the researcher)
Size:	50 µl
Concentration:	1 mg/ml

Immunohistochemistry Image:



Anti-TUBB2B antibody IHC of human colon, submucosal plexus. Immunohistochemistry of formalin-fixed, paraffin-embedded tissue after heat-induced antigen retrieval. Antibody LS-B4190 concentration 5 ug/ml.

Immunohistochemistry Image:



Anti-TUBB2B antibody IHC of human brain, cortex. Immunohistochemistry of formalin-fixed, paraffin-embedded tissue after heat-induced antigen retrieval. Antibody LS-B4190 concentration 5 ug/ml.

Requested From:

Japan

Laboratory Reagent For In Vitro Research Use Only

Not for resale without prior written consent from LifeSpan BioSciences, Inc.

Created on 9/23/2014

© 2014 LifeSpan BioSciences