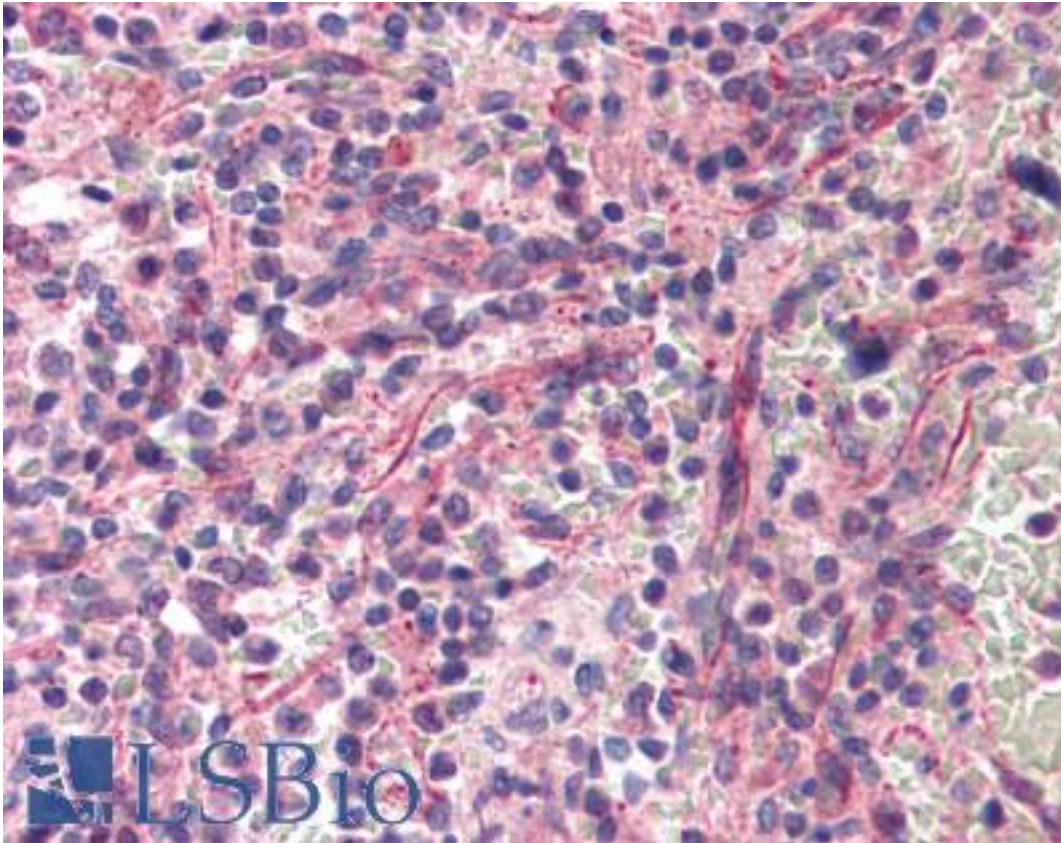


RPS6KB1 / P70S6K / S6K Rabbit anti-Human Polyclonal (C-Terminus) Antibody - LS-B419 - LSBio	
<b>CatalogID:</b>	LS-B419
<b>Validation:</b>	This antibody replaces catalog number LS-C18886. It has been validated for use in the following assays: IHC.
<b>Target:</b>	ribosomal protein S6 kinase, 70kDa, polypeptide 1 (RPS6KB1)
<b>Synonyms:</b>	RPS6KB1 Antibody, 70 kDa S6 kinase Antibody, p70 S6KA Antibody, p70-alpha Antibody, p70-S6K Antibody, p70 S6 kinase alpha Antibody, p70s6 kinase Antibody, S6K-beta-1 Antibody, STK14A Antibody, p70 ribosomal S6 kinase Antibody, p70 S6 kinase, alpha 1 Antibody, p70 S6 kinase, alpha 2 Antibody, p70 S6K-alpha Antibody, p70-S6K 1 Antibody, p70S6K Antibody, p70S6K1 Antibody, PS6K Antibody, Ribosomal protein S6 kinase I Antibody, S6K Antibody, S6K1 Antibody, p70 ribosomal S6 kinase alpha Antibody, p70(S6K)-alpha Antibody
<b>Family / Subfamily:</b>	Protein Kinase / P70 RSK
<b>Host</b>	RPS6KB1 antibody was produced in Rabbit
<b>Clonality:</b>	Polyclonal
<b>Immunogen Species:</b>	RPS6KB1 / P70S6K / S6K antibody was raised against Human
<b>Antigen Type:</b>	Synthetic peptide
<b>Immunogen:</b>	RPS6KB1 / P70S6K / S6K antibody was raised against synthetic peptide from human RPS6KB1 / S6K.
<b>Specificity:</b>	The carboxy terminal end of human p70S6K protein.
<b>Epitope:</b>	C-Terminus
<b>Reactivity:</b>	Human
<b>Purification:</b>	Immunoaffinity purified
<b>Presentation:</b>	0.02 M potassium phosphate, 0.15 M sodium chloride, pH 7.2, 0.01% sodium azide.
<b>Recommended Storage:</b>	+4°C or -20°C, Avoid repeated freezing and thawing.
<b>Usage Summary:</b>	Immunohistochemistry: LS-B419 was validated for use in immunohistochemistry on a panel of 21 formalin-fixed, paraffin-embedded (FFPE) human tissues after heat induced antigen retrieval in pH 6.0 citrate buffer. After incubation with the primary antibody, slides were incubated with biotinylated secondary antibody, followed by alkaline phosphatase-streptavidin and chromogen. The stained slides were evaluated by a pathologist to confirm staining specificity. The optimal working concentration for LS-B419 was determined to be 5 µg/ml.
<b>Uses:</b>	IHC - Paraffin (5 µg/ml), Western blot (1 µg/ml), Immunoprecipitation, ELISA (0.5 µg/ml) (Optimal dilution to be determined by the researcher)
<b>Size:</b>	50 µg

**Immunohistochemistry Image:**



Anti-RPS6KB1 / S6K antibody IHC of human spleen. Immunohistochemistry of formalin-fixed, paraffin-embedded tissue after heat-induced antigen retrieval. Antibody LS-B419 concentration 5 ug/ml.

**Western Blot Image:**



Anti-p70S6K antibody - Western Blot. Western blot of Affinity Purified anti-p70S6K antibody shows detection of a predominant band corresponding to p70S6K in mouse brain extract (right lane) after immunoprecipitation. The left lane shows mock immunoprecipitation.

<b>Requested From:</b>	Japan
Laboratory Reagent For In Vitro Research Use Only	
Not for resale without prior written consent from LifeSpan BioSciences, Inc.	
Created on 9/23/2014	
© 2014 LifeSpan BioSciences	