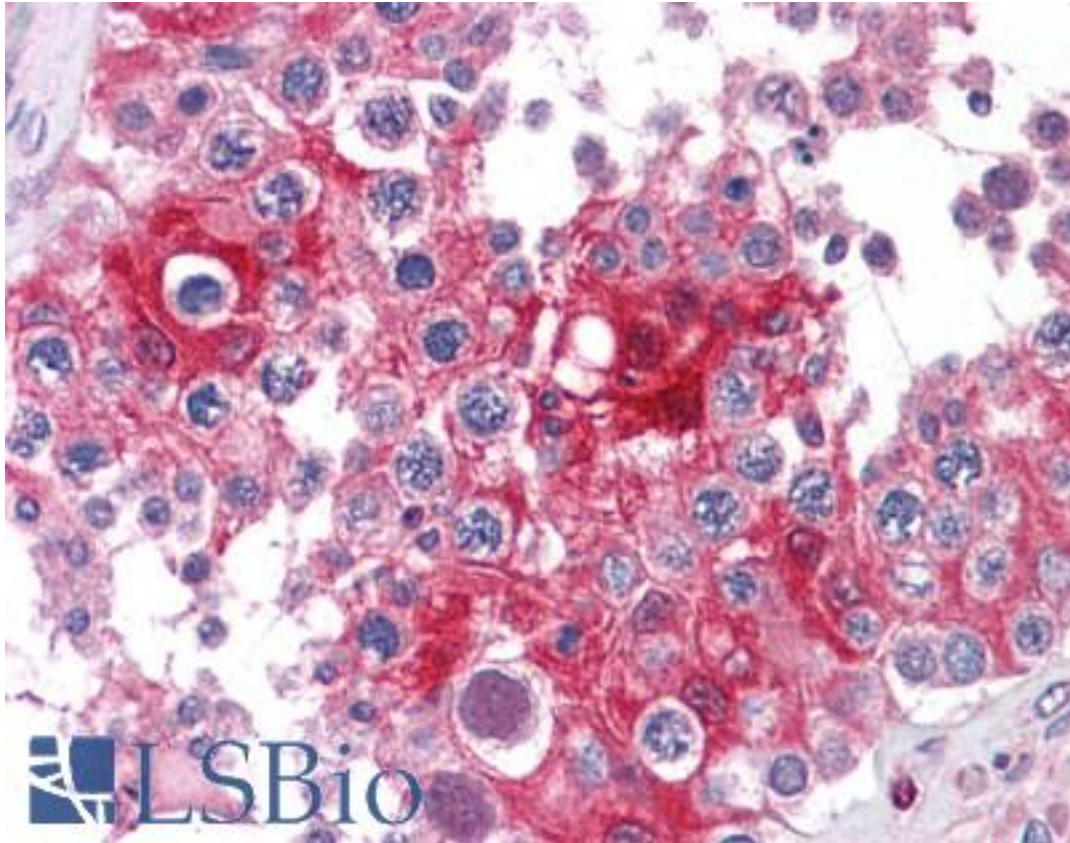


**LDHA / LDH1 Mouse anti-Human Monoclonal Antibody - LS-B4189 - LSBio**

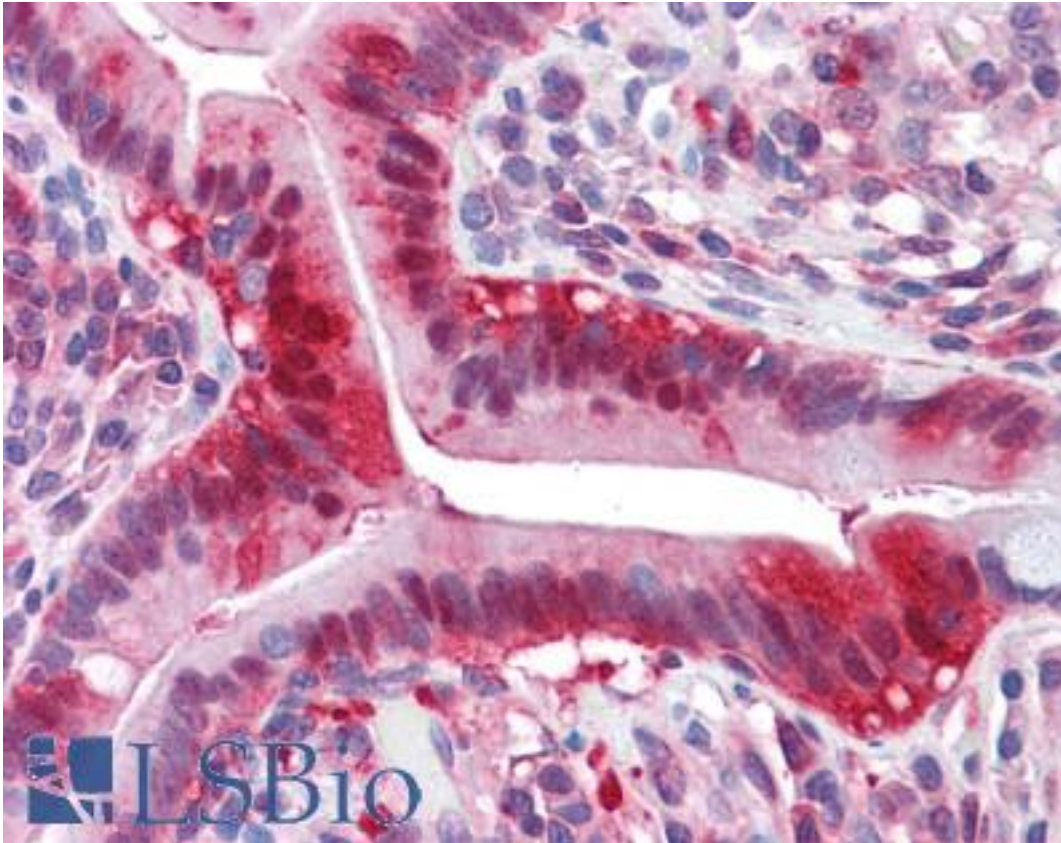
<b>CatalogID:</b>	LS-B4189
<b>Validation:</b>	This antibody replaces catalog number LS-C113055. It has been validated for use in the following assays: IHC-P.
<b>Target:</b>	lactate dehydrogenase A (LDHA)
<b>Synonyms:</b>	LDHA Antibody, LDH muscle subunit Antibody, LDH1 Antibody, Lactate dehydrogenase M Antibody, LDH-M Antibody, GSD11 Antibody, Lactate dehydrogenase A Antibody, LDH-A Antibody, LDHM Antibody, PIG19 Antibody, Proliferation-inducing gene 19 Antibody
<b>Host</b>	LDHA antibody was produced in Mouse
<b>Clonality:</b>	Monoclonal
<b>Isotype:</b>	IgG2b,k
<b>Immunogen Species:</b>	LDHA / LDH1 antibody was raised against Human
<b>Reactivity:</b>	Human
<b>Purification:</b>	Protein G purified
<b>Presentation:</b>	Phosphate buffered saline, pH 7.4, 0.1% sodium azide
<b>Recommended Storage:</b>	+4°C or -20°C, Avoid repeated freezing and thawing.
<b>Uses:</b>	IHC - Paraffin (5 µg/ml) (Optimal dilution to be determined by the researcher)
<b>Size:</b>	50 µl
<b>Concentration:</b>	1 mg/ml

**Immunohistochemistry Image:**



Anti-LDHA antibody IHC of human testis. Immunohistochemistry of formalin-fixed, paraffin-embedded tissue after heat-induced antigen retrieval. Antibody LS-B4189 concentration 5 ug/ml.

**Immunohistochemistry Image:**



Anti-LDHA antibody IHC of human small intestine. Immunohistochemistry of formalin-fixed, paraffin-embedded tissue after heat-induced antigen retrieval. Antibody LS-B4189 concentration 5 ug/ml.

**Requested From:**

Japan

Laboratory Reagent For In Vitro Research Use Only

Not for resale without prior written consent from LifeSpan BioSciences, Inc.

Created on 9/23/2014

© 2014 LifeSpan BioSciences