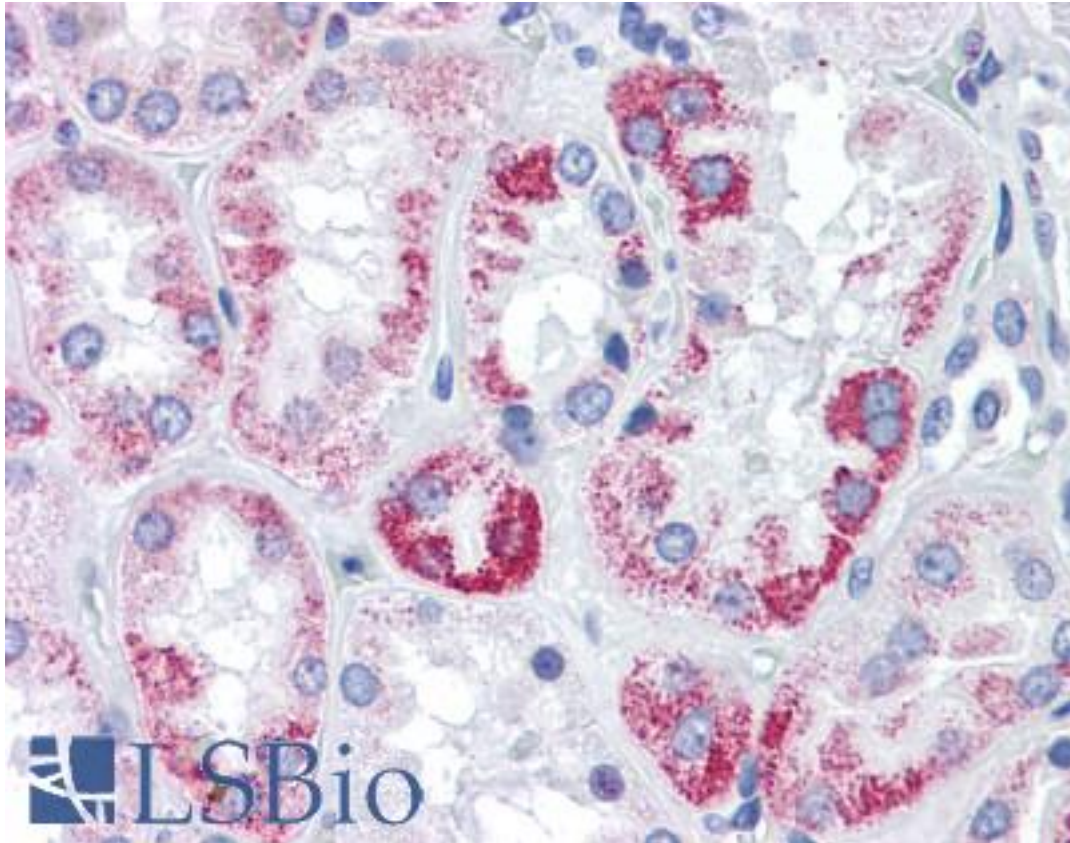


OAT Mouse anti-Human Monoclonal (AT23A2) Antibody - LS-B4188 - LSBio

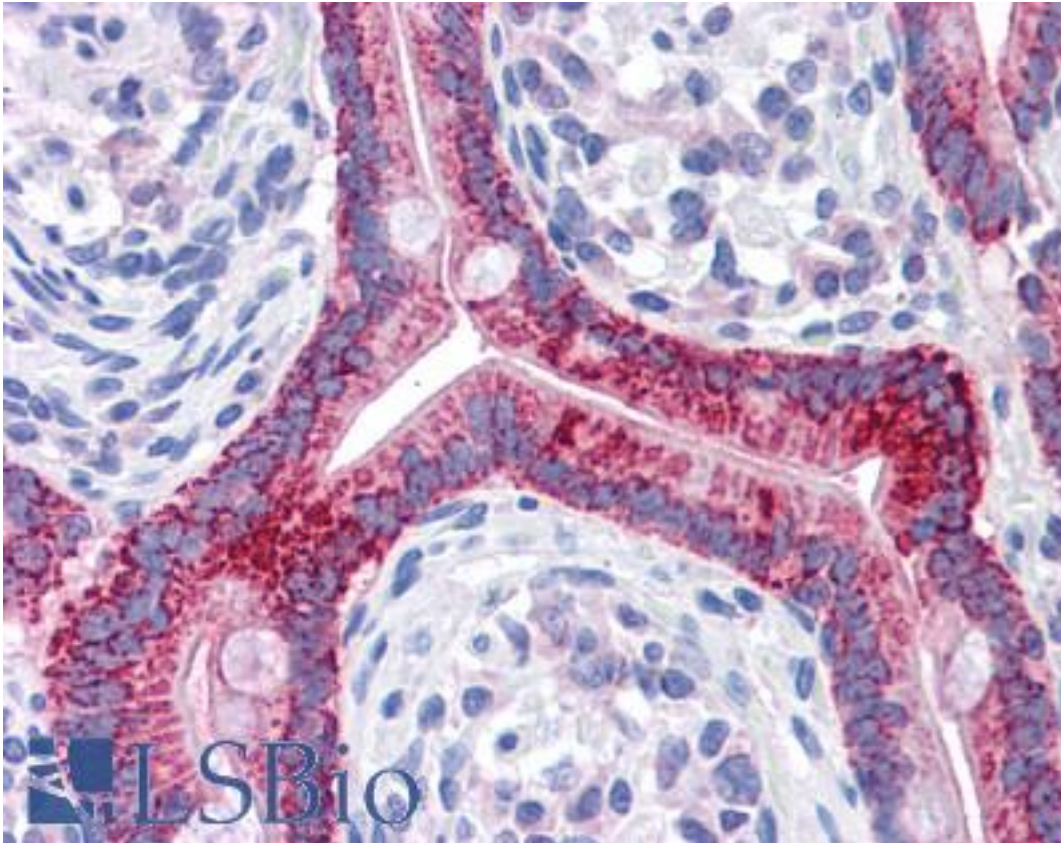
CatalogID:	LS-B4188
Validation:	This antibody replaces catalog number LS-C113051. It has been validated for use in the following assays: IHC-P.
Target:	ornithine aminotransferase (OAT)
Synonyms:	OAT Antibody, GACR Antibody, HOGA Antibody, OKT Antibody, Gyrate atrophy Antibody, OATASE Antibody, Ornithine aminotransferase Antibody
Host	OAT antibody was produced in Mouse
Clonality:	Monoclonal
Isotype:	IgG1,k
Clone Name:	AT23A2
Immunogen Species:	OAT antibody was raised against Human
Immunogen:	OAT antibody was raised against recombinant human OAT
Specificity:	Human OAT
Reactivity:	Human
Purification:	Protein G purified
Presentation:	Phosphate buffered saline, pH 7.4, 0.1% sodium azide
Recommended Storage:	Short term 4°C, long term aliquot and store at -20°C, avoid freeze thaw cycles. Store undiluted.
Uses:	IHC - Paraffin (5 µg/ml) (Optimal dilution to be determined by the researcher)
Size:	50 µl
Concentration:	1 mg/ml

Immunohistochemistry Image:



Anti-OAT antibody IHC of human kidney. Immunohistochemistry of formalin-fixed, paraffin-embedded tissue after heat-induced antigen retrieval. Antibody LS-B4188 concentration 5 ug/ml.

Immunohistochemistry Image:



Anti-OAT antibody IHC of human small intestine. Immunohistochemistry of formalin-fixed, paraffin-embedded tissue after heat-induced antigen retrieval. Antibody LS-B4188 concentration 5 ug/ml.

Requested From:

Japan

Laboratory Reagent For In Vitro Research Use Only

Not for resale without prior written consent from LifeSpan BioSciences, Inc.

Created on 9/23/2014

© 2014 LifeSpan BioSciences