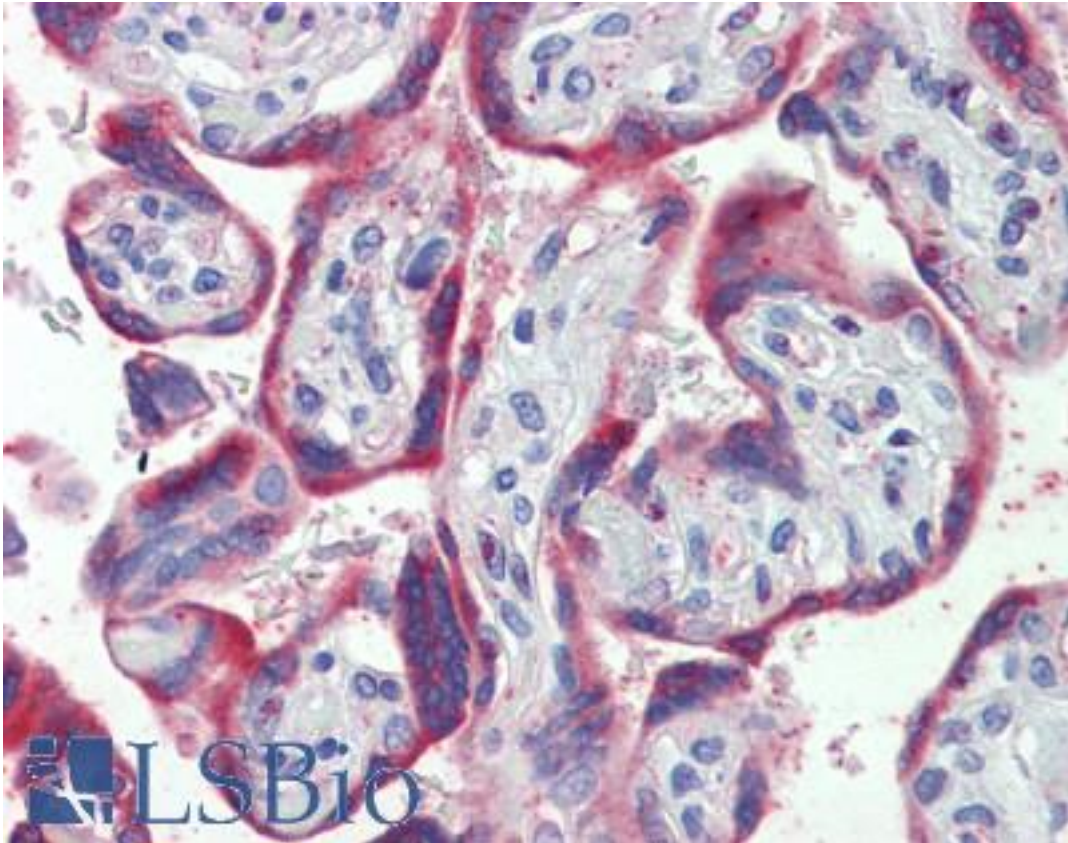


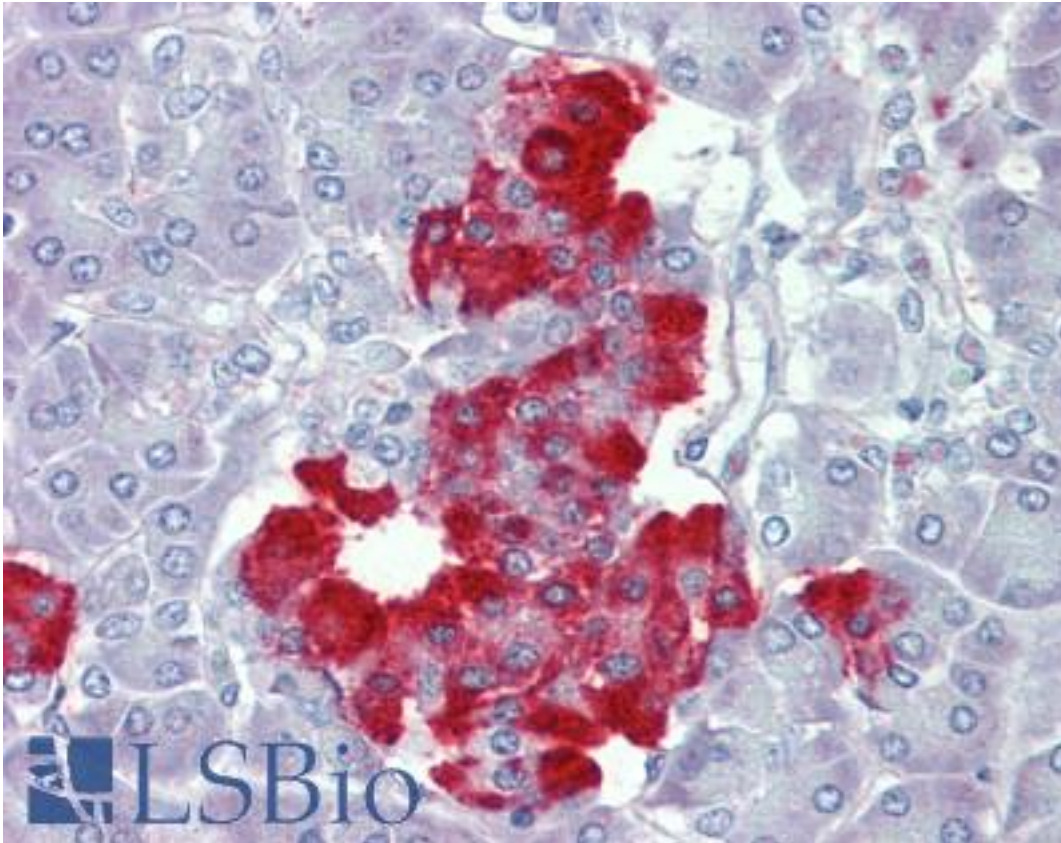
PDGF-BB / PDGFB Goat anti-Human Polyclonal (C-Terminus) Antibody - LS-B4182 - LSBio	
<b>CatalogID:</b>	LS-B4182
<b>Validation:</b>	This antibody replaces catalog number LS-C108405. It has been validated for use in the following assays: IHC-P.
<b>Target:</b>	platelet-derived growth factor beta polypeptide (PDGFB)
<b>Synonyms:</b>	PDGFB Antibody, Becaplermin Antibody, PDGF-BB Antibody, PDGF-b Antibody, SSV Antibody, PDGF subunit B Antibody, PDGF-2 Antibody, PDGF2 Antibody, Proto-oncogene c-Sis Antibody, SIS Antibody, C-sis Antibody, PDGF, B chain Antibody
<b>Family / Subfamily:</b>	PDGF / not assigned-PDGF
<b>Host</b>	PDGFB antibody was produced in Goat
<b>Clonality:</b>	Polyclonal
<b>Immunogen Species:</b>	PDGF-BB / PDGFB antibody was raised against Human
<b>Antigen Type:</b>	Synthetic peptide
<b>Immunogen:</b>	PDGF-BB / PDGFB antibody was raised against synthetic peptide KHRKFKHTHDKT from C-Terminus of human PDGFB (NP_002599.1; NP_148937.1). Percent identity by BLAST analysis: Human, Gorilla, Gibbon, Monkey, Sheep, Bovine, Opossum (100%); Marmoset, Mouse, Rat, Elephant, Panda, Bat, Dog, Horse (92%); Cat (83%).
<b>Specificity:</b>	Human PDGFB.
<b>Epitope:</b>	C-Terminus
<b>Reactivity:</b>	Human, Gorilla, Gibbon, Bovine, Sheep
<b>Predicted Reactivity:</b>	Monkey, Mouse, Rat, Bat, Dog, Horse
<b>Purification:</b>	Immunoaffinity purified
<b>Presentation:</b>	Tris-buffered saline, pH 7.3, 0.5% BSA, 0.02% sodium azide
<b>Recommended Storage:</b>	Store at -20°C. Minimize freezing and thawing.
<b>Usage Summary:</b>	Immunohistochemistry: LS-B4182 was validated for use in immunohistochemistry on a panel of 21 formalin-fixed, paraffin-embedded (FFPE) human tissues after heat induced antigen retrieval in pH 6.0 citrate buffer. After incubation with the primary antibody, slides were incubated with biotinylated secondary antibody, followed by alkaline phosphatase-streptavidin and chromogen. The stained slides were evaluated by a pathologist to confirm staining specificity. The optimal working concentration for LS-B4182 was determined to be 3.75 ug/ml
<b>Uses:</b>	IHC - Paraffin (3.75 µg/ml) (Optimal dilution to be determined by the researcher)
<b>Size:</b>	50 µg
<b>Concentration:</b>	0.5 mg/ml

**Immunohistochemistry Image:**



Anti-PDGFB antibody IHC of human placenta. Immunohistochemistry of formalin-fixed, paraffin-embedded tissue after heat-induced antigen retrieval. Antibody LS-B4182 concentration 3.75 ug/ml.

**Immunohistochemistry Image:**



Anti-PDGFB antibody IHC of human pancreas. Immunohistochemistry of formalin-fixed, paraffin-embedded tissue after heat-induced antigen retrieval. Antibody LS-B4182 concentration 3.75 ug/ml.

**Requested From:**

Japan

Laboratory Reagent For In Vitro Research Use Only

Not for resale without prior written consent from LifeSpan BioSciences, Inc.

Created on 9/23/2014

© 2014 LifeSpan BioSciences