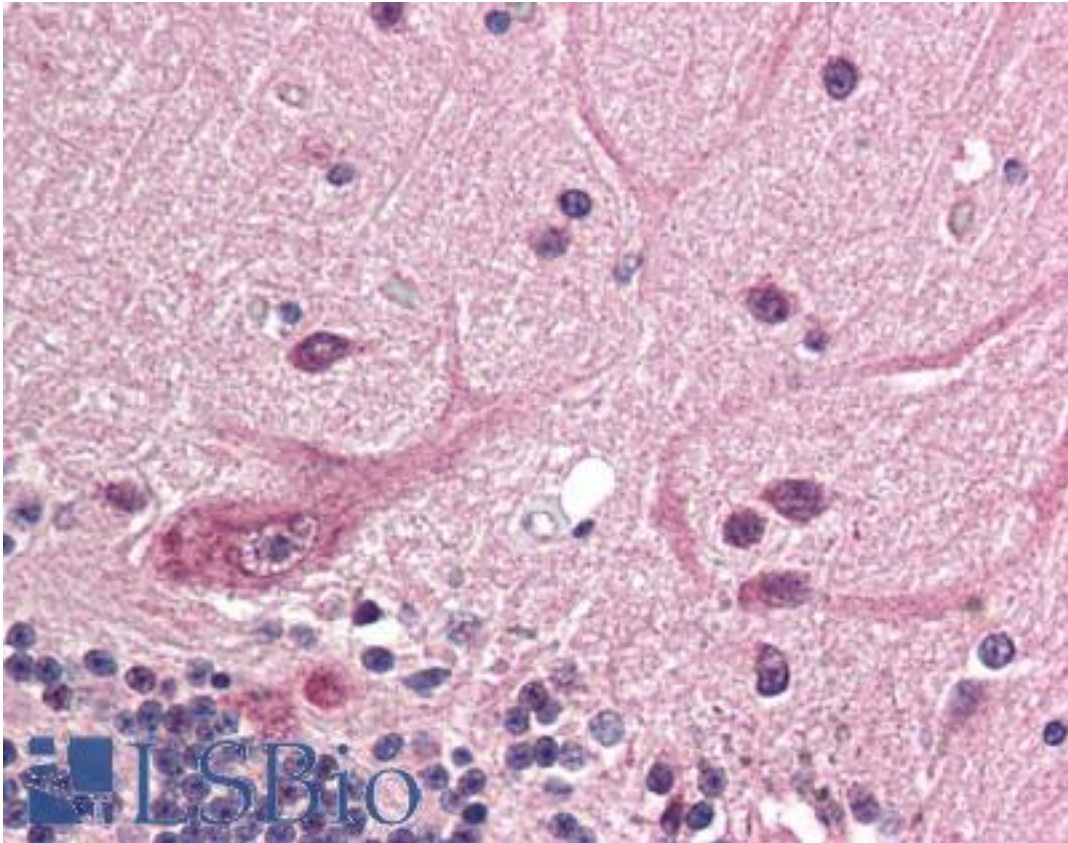


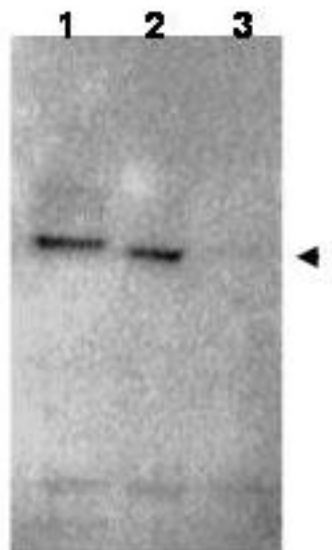
RNF25 Rabbit anti-Human Polyclonal (C-Terminus) Antibody - LS-B418 - LSBio	
<b>CatalogID:</b>	LS-B418
<b>Validation:</b>	This antibody replaces catalog number LS-C19052. It has been validated for use in the following assays: IHC.
<b>Target:</b>	ring finger protein 25 (RNF25)
<b>Synonyms:</b>	RNF25 Antibody, AO7 Antibody, Ring finger protein 25 Antibody, Ring finger protein AO7 Antibody
<b>Host</b>	RNF25 antibody was produced in Rabbit
<b>Clonality:</b>	Polyclonal
<b>Immunogen Species:</b>	RNF25 antibody was raised against Human
<b>Antigen Type:</b>	Synthetic peptide
<b>Immunogen:</b>	RNF25 antibody was raised against synthetic peptide from human RNF25.
<b>Specificity:</b>	Amino acids near the carboxyl terminus of human RNF25 protein.
<b>Epitope:</b>	C-Terminus
<b>Reactivity:</b>	Human, Mouse
<b>Purification:</b>	Immunoaffinity purified
<b>Presentation:</b>	0.02 M potassium phosphate, 0.15 M sodium chloride, pH 7.2, 0.01% sodium azide.
<b>Recommended Storage:</b>	+4°C or -20°C, Avoid repeated freezing and thawing.
<b>Usage Summary:</b>	Immunohistochemistry: LS-B418 was validated for use in immunohistochemistry on a panel of 21 formalin-fixed, paraffin-embedded (FFPE) human tissues after heat induced antigen retrieval in pH 6.0 citrate buffer. After incubation with the primary antibody, slides were incubated with biotinylated secondary antibody, followed by alkaline phosphatase-streptavidin and chromogen. The stained slides were evaluated by a pathologist to confirm staining specificity. The optimal working concentration for LS-B418 was determined to be 5 ug/ml.
<b>Uses:</b>	IHC - Paraffin (5 µg/ml), Western blot (1:200 - 1:2000), Immunoprecipitation, ELISA (1:10000 - 1:40000) (Optimal dilution to be determined by the researcher)
<b>Size:</b>	50 µg
<b>Concentration:</b>	1 mg/ml

**Immunohistochemistry Image:**



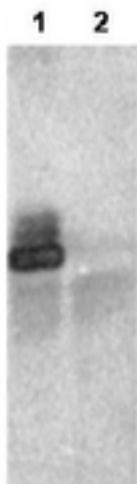
Anti-RNF25 antibody IHC of human brain, cerebellum. Immunohistochemistry of formalin-fixed, paraffin-embedded tissue after heat-induced antigen retrieval. Antibody LS-B418 concentration 5 ug/ml.

**Western Blot Image:**



Anti-RNF25 Antibody - Western Blot. Western blot of affinity purified anti-RNF25 antibody shows detection of RNF25 (arrow head) in HEK293 cells over-expressing human RNF25 (lane 1) or mouse RNF25 (lane 2). Lane 1 is a vector only control. The extracts were loaded onto a gel, followed by electrophoresis and transfer to nitrocellulose. The membrane was probed with the primary antibody diluted to 1:1000. Personal Communication, Allan Weissman, CCR-NCI, Bethesda, MD.

**Western Blot Image:**



Anti-RNF25 Antibody - Immunoprecipitation. 1 ug of affinity purified anti-RNF25 was used in immunoprecipitation of 20 ug HEK293 cell lysate over-expressing HA-tagged human RNF25 (lane 1) or vector only control (lane 2). The precipitated complex was loaded onto a gel, followed by electrophoresis and transfer to nitrocellulose. The membrane was probed with anti-HA tag antibody. Personal Communication, Allan Weissman, CCR-NCI, Bethesda, MD.

**Requested From:**

Japan

Laboratory Reagent For In Vitro Research Use Only

Not for resale without prior written consent from LifeSpan BioSciences, Inc.

Created on 9/23/2014

© 2014 LifeSpan BioSciences