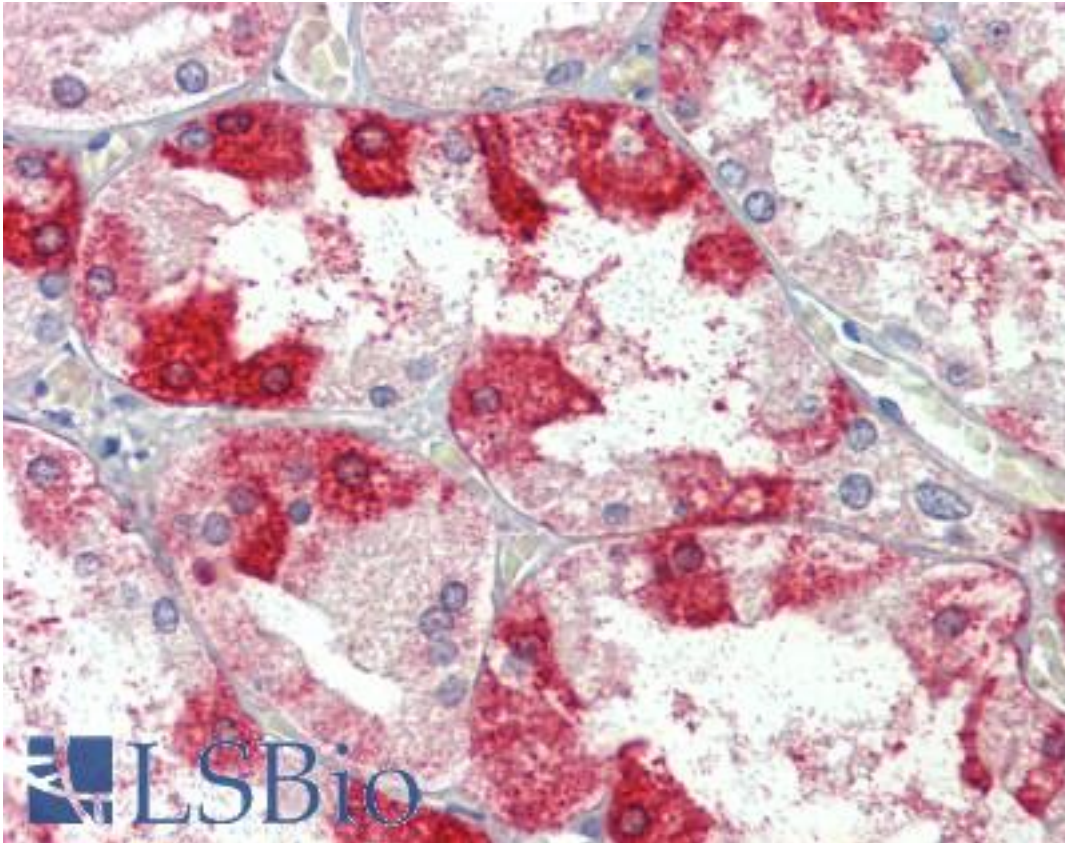


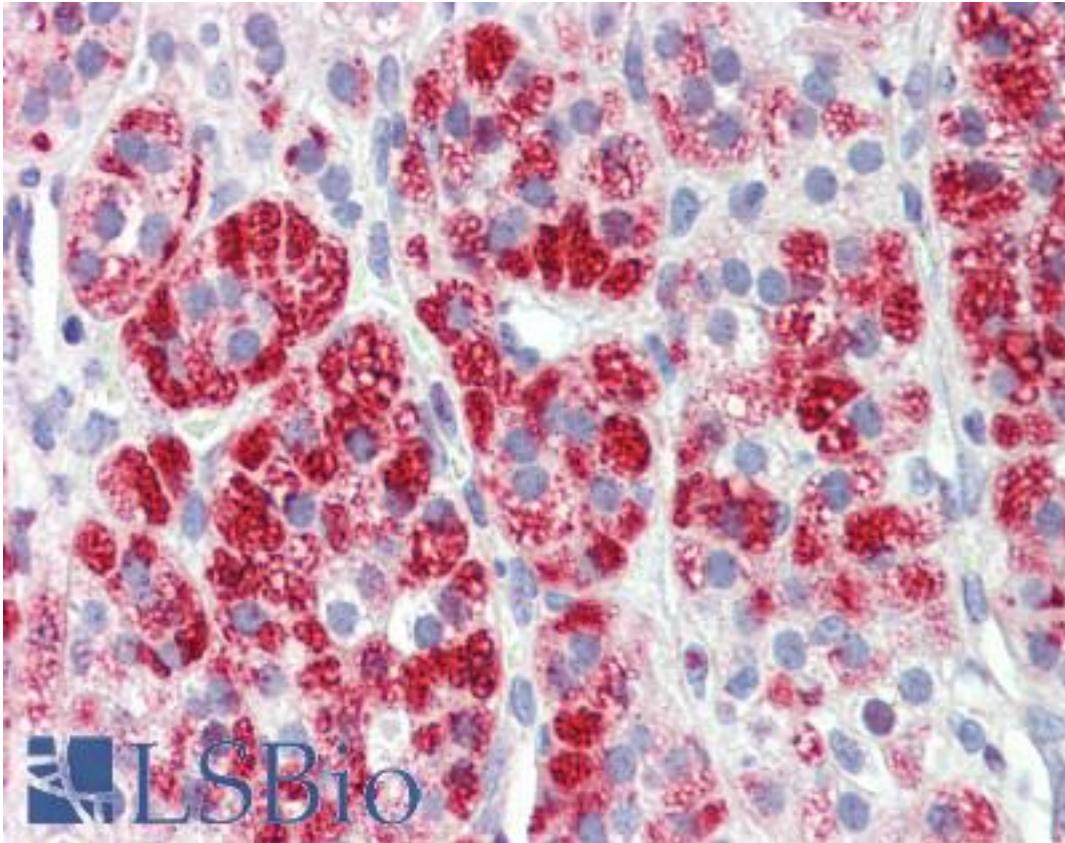
CLTC / Clathrin Heavy Chain Goat anti-Human Polyclonal (Internal) Antibody - LS-B4174 - LSBio	
CatalogID:	LS-B4174
Validation:	This antibody replaces catalog number LS-C108368. It has been validated for use in the following assays: IHC-P.
Target:	clathrin, heavy chain (Hc) (CLTC)
Synonyms:	CLTC Antibody, Clathrin, heavy chain Antibody, CLH17 Antibody, CLTCL2 Antibody, CHC Antibody, CHC17 Antibody, Clathrin heavy chain 1 Antibody, CLH-17 Antibody, KIAA0034 Antibody, Hc Antibody, Clathrin Heavy Chain Antibody, Clathrin, heavy chain (Hc) Antibody
Host	CLTC antibody was produced in Goat
Clonality:	Polyclonal
Immunogen Species:	CLTC / Clathrin Heavy Chain antibody was raised against Human
Antigen Type:	Synthetic peptide
Immunogen:	CLTC / Clathrin Heavy Chain antibody was raised against synthetic peptide C-ESLRKEEQATETQ from an internal region (near C-terminus) of human CLTC (NP_004850.1). Percent identity by BLAST analysis: Human, Gorilla, Gibbon, Monkey, Marmoset, Mouse, Rat, Elephant, Panda, Dog, Bat, Bovine, Horse, Rabbit, Pig, Opossum, Turkey, Chicken, Platypus, Xenopus, Zebrafish (100%); Stickleback (93%); Pufferfish (86%).
Specificity:	Human CLTC.
Epitope:	Internal
Reactivity:	Human, Gorilla, Gibbon, Monkey, Mouse, Rat, Bat, Bovine, Dog, Horse, Pig, Rabbit, Chicken, Xenopus, Zebrafish
Purification:	Immunoaffinity purified
Presentation:	Tris-buffered saline, pH 7.3, 0.5% BSA, 0.02% sodium azide
Recommended Storage:	Store at -20°C. Minimize freezing and thawing.
Usage Summary:	Immunohistochemistry: LS-B4174 was validated for use in immunohistochemistry on a panel of 21 formalin-fixed, paraffin-embedded (FFPE) human tissues after heat induced antigen retrieval in pH 6.0 citrate buffer. After incubation with the primary antibody, slides were incubated with biotinylated secondary antibody, followed by alkaline phosphatase-streptavidin and chromogen. The stained slides were evaluated by a pathologist to confirm staining specificity. The optimal working concentration for LS-B4174 was determined to be 3.75 ug/ml
Uses:	IHC - Paraffin (3.75 µg/ml) (Optimal dilution to be determined by the researcher)
Size:	50 µg
Concentration:	0.5 mg/ml

Immunohistochemistry Image:



Anti-CLTC antibody IHC of human kidney. Immunohistochemistry of formalin-fixed, paraffin-embedded tissue after heat-induced antigen retrieval. Antibody LS-B4174 concentration 3.75 ug/ml.

Immunohistochemistry Image:



Anti-CLTC antibody IHC of human adrenal. Immunohistochemistry of formalin-fixed, paraffin-embedded tissue after heat-induced antigen retrieval. Antibody LS-B4174 concentration 3.75 ug/ml.

Requested From:

Japan

Laboratory Reagent For In Vitro Research Use Only

Not for resale without prior written consent from LifeSpan BioSciences, Inc.

Created on 9/23/2014

© 2014 LifeSpan BioSciences