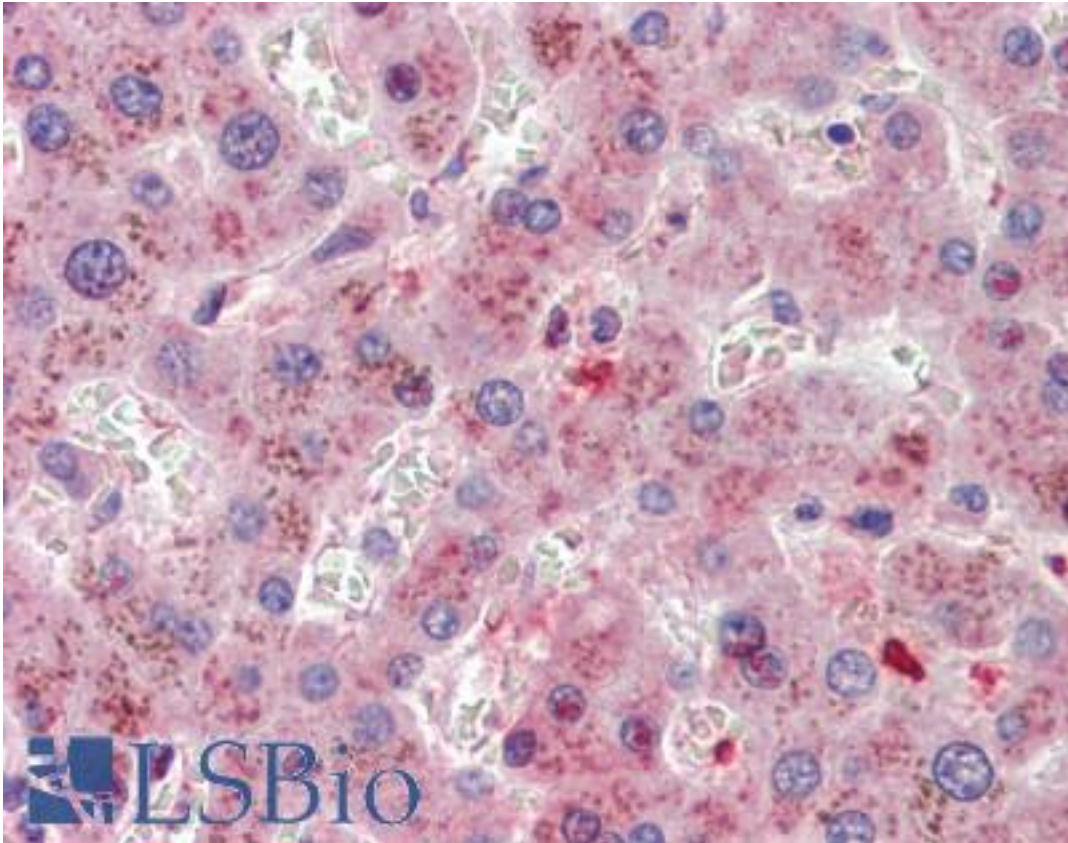


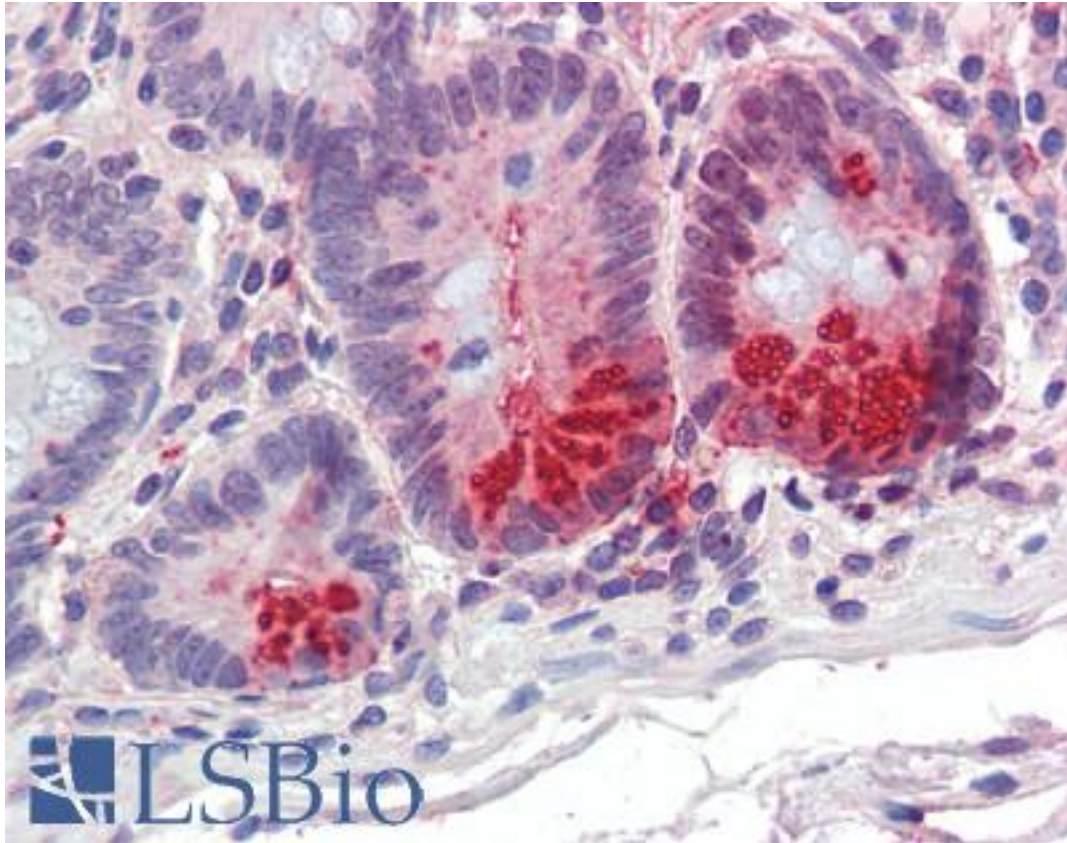
5-Alpha Reductase / SRD5A1 Goat anti-Human Polyclonal (Internal) Antibody - LS-B4172 - LSBio	
<b>CatalogID:</b>	LS-B4172
<b>Validation:</b>	This antibody replaces catalog number LS-C108353. It has been validated for use in the following assays: IHC-P.
<b>Target:</b>	steroid-5-alpha-reductase, alpha polypeptide 1 (3-oxo-5 alpha-steroid delta 4-dehydrogenase alpha 1) (SRD5A1)
<b>Synonyms:</b>	SRD5A1 Antibody, 5-alpha reductase Antibody, SR type 1 Antibody, Steroid 5-alpha-reductase 1 Antibody, S5AR 1 Antibody
<b>Host</b>	SRD5A1 antibody was produced in Goat
<b>Clonality:</b>	Polyclonal
<b>Immunogen Species:</b>	5-Alpha Reductase / SRD5A1 antibody was raised against Human
<b>Antigen Type:</b>	Synthetic peptide
<b>Immunogen:</b>	5-Alpha Reductase / SRD5A1 antibody was raised against synthetic peptide RNLRKPGDTGYK from internal region of human SRD5A1 (NP_001038.1). Percent identity by BLAST analysis: Human, Gorilla, Gibbon, Monkey, Marmoset, Mouse (100%); Rat, Sheep, Hamster, Elephant, Panda, Dog, Bovine, Pig, Opossum, Turkey, Chicken, Xenopus, Medaka, Zebrafish (92%); Bat, Horse, Rabbit, Stickleback, Tunicate (83%).
<b>Specificity:</b>	Human SRD5A1.
<b>Epitope:</b>	Internal
<b>Reactivity:</b>	Human, Gorilla, Gibbon, Monkey, Mouse
<b>Predicted Reactivity:</b>	Rat, Bovine, Dog, Hamster, Pig, Sheep, Chicken, Xenopus, Zebrafish
<b>Purification:</b>	Immunoaffinity purified
<b>Presentation:</b>	Tris-buffered saline, pH 7.3, 0.5% BSA, 0.02% sodium azide
<b>Recommended Storage:</b>	Store at -20°C. Minimize freezing and thawing.
<b>Usage Summary:</b>	Immunohistochemistry: LS-B4172 was validated for use in immunohistochemistry on a panel of 21 formalin-fixed, paraffin-embedded (FFPE) human tissues after heat induced antigen retrieval in pH 6.0 citrate buffer. After incubation with the primary antibody, slides were incubated with biotinylated secondary antibody, followed by alkaline phosphatase-streptavidin and chromogen. The stained slides were evaluated by a pathologist to confirm staining specificity. The optimal working concentration for LS-B4172 was determined to be 3.75 ug/ml
<b>Uses:</b>	IHC - Paraffin (3.75 µg/ml) (Optimal dilution to be determined by the researcher)
<b>Size:</b>	50 µg
<b>Concentration:</b>	0.5 mg/ml

**Immunohistochemistry Image:**



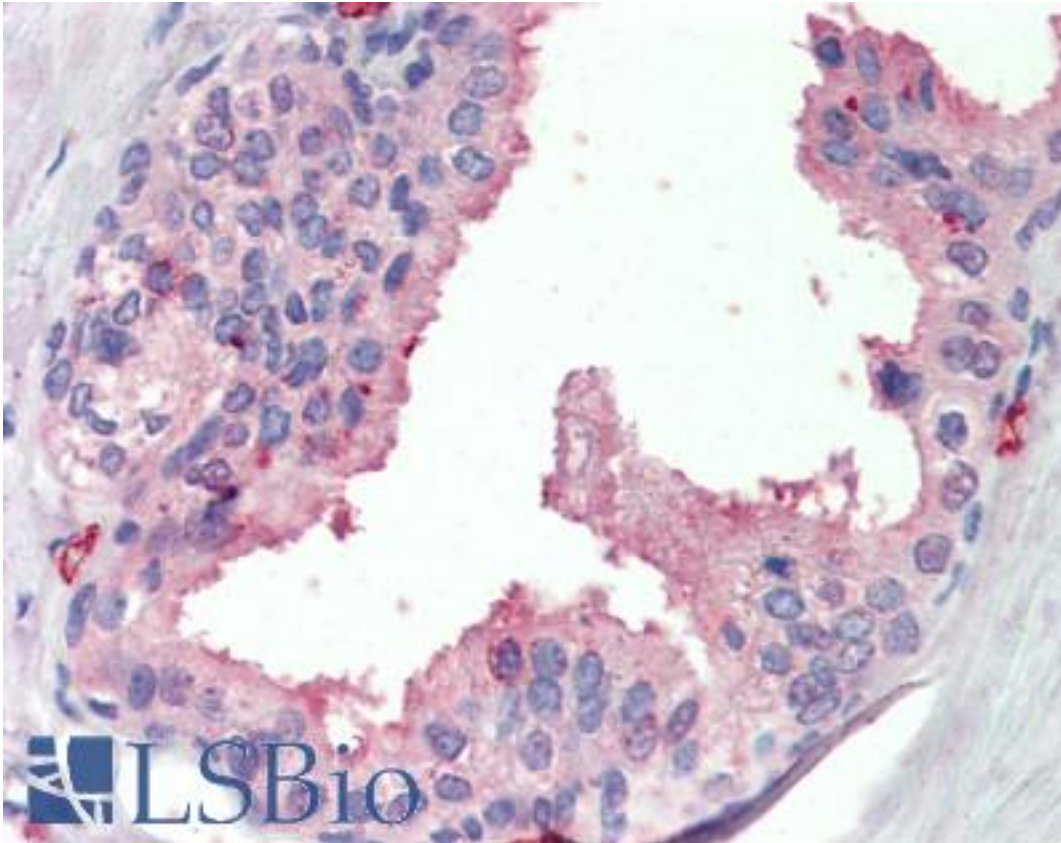
Anti-SRD5A1 antibody IHC of human liver. Immunohistochemistry of formalin-fixed, paraffin-embedded tissue after heat-induced antigen retrieval. Antibody LS-B4172 concentration 3.75 ug/ml.

**Immunohistochemistry Image:**



Anti-SRD5A1 antibody IHC of human small intestine. Immunohistochemistry of formalin-fixed, paraffin-embedded tissue after heat-induced antigen retrieval. Antibody LS-B4172 concentration 3.75 ug/ml.

**Immunohistochemistry Image:**



Anti-SRD5A1 antibody IHC of human prostate. Immunohistochemistry of formalin-fixed, paraffin-embedded tissue after heat-induced antigen retrieval. Antibody LS-B4172 concentration 3.75 ug/ml.

**Requested From:**

Japan

Laboratory Reagent For In Vitro Research Use Only

Not for resale without prior written consent from LifeSpan BioSciences, Inc.

Created on 9/23/2014

© 2014 LifeSpan BioSciences