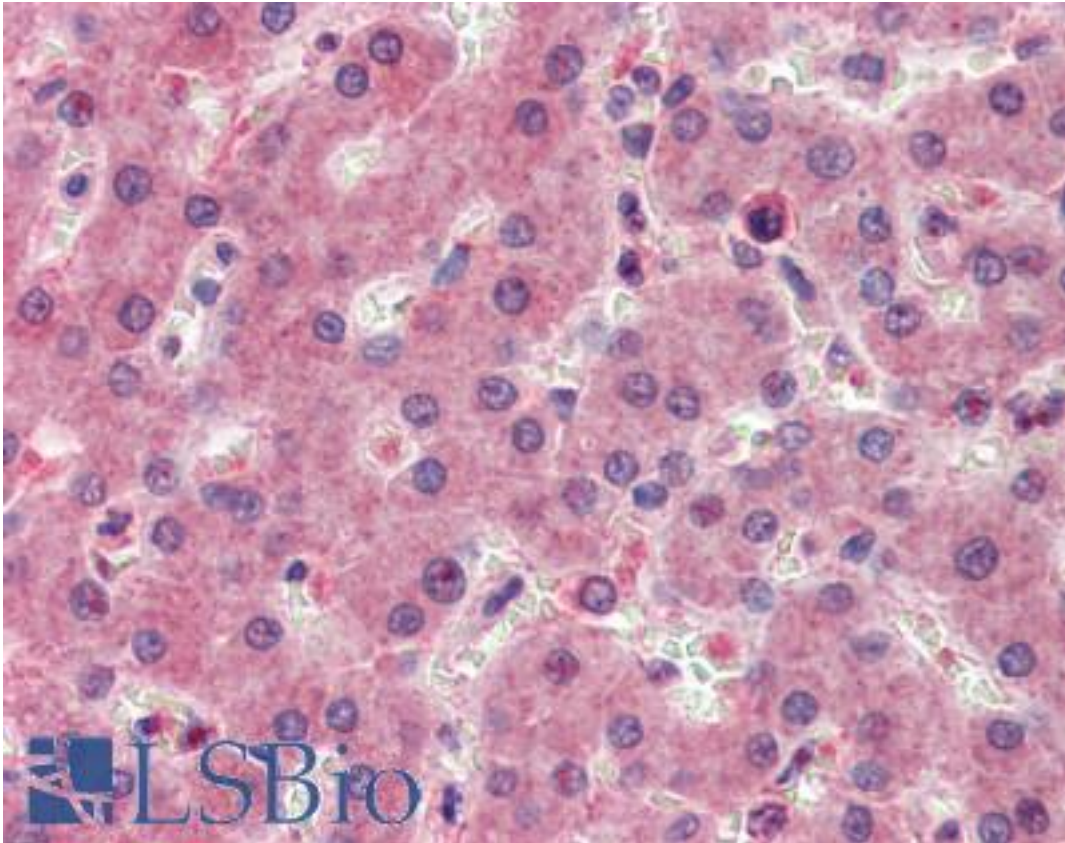


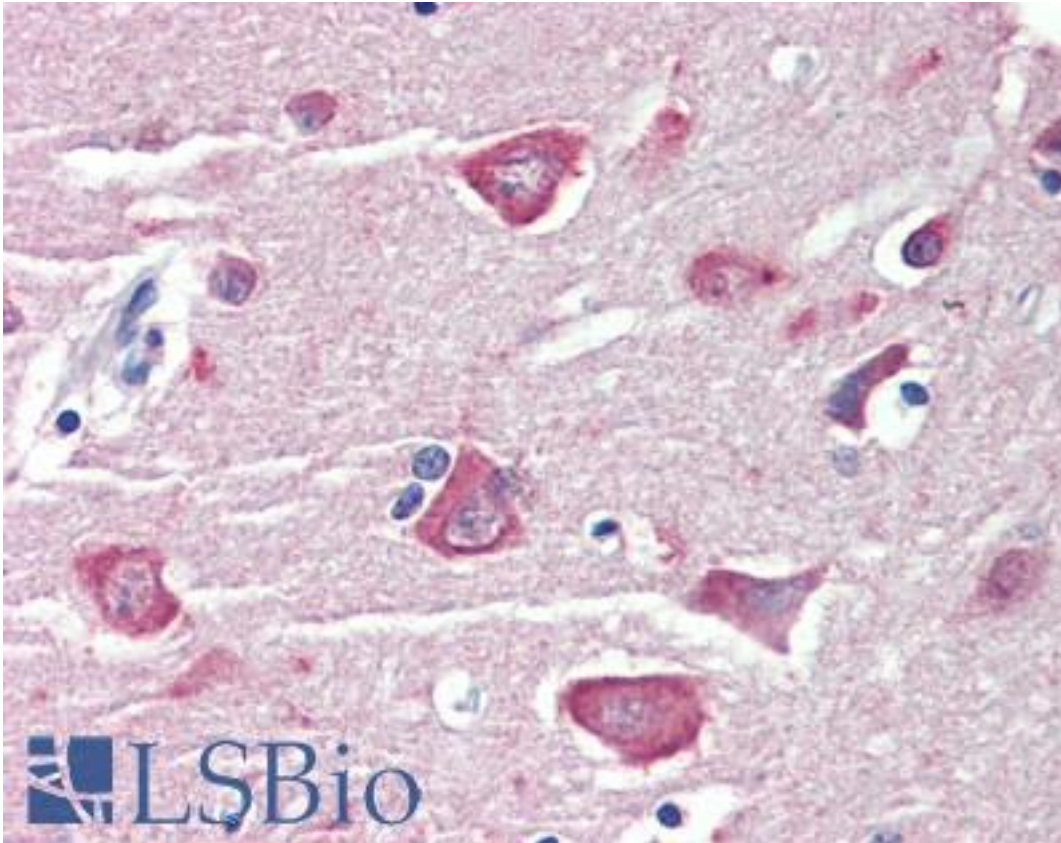
RASSF1 / RASSF1A Goat anti-Human Polyclonal (Internal) Antibody - LS-B4170 - LSBio	
<b>CatalogID:</b>	LS-B4170
<b>Validation:</b>	This antibody replaces catalog number LS-C108348. It has been validated for use in the following assays: IHC-P.
<b>Target:</b>	Ras association (RalGDS/AF-6) domain family member 1 (RASSF1)
<b>Synonyms:</b>	RASSF1 Antibody, 123F2 Antibody, RASSF1A Antibody, RDA32 Antibody, Tumor suppressor protein RDA32 Antibody, NORE2A Antibody, WUGSC:H_LUCA12.5 Antibody, REH3P21 Antibody
<b>Host</b>	RASSF1 antibody was produced in Goat
<b>Clonality:</b>	Polyclonal
<b>Immunogen Species:</b>	RASSF1 / RASSF1A antibody was raised against Human
<b>Antigen Type:</b>	Synthetic peptide
<b>Immunogen:</b>	RASSF1 / RASSF1A antibody was raised against synthetic peptide C-SQAEIEQKIKEYN from an internal region of human RASSF1 / RASSF1A (NP_009113.3; NP_733830.1; NP_733831.1; NP_733832.1). Percent identity by BLAST analysis: Human, Gorilla, Gibbon, Monkey, Elephant, Bat, Bovine, Horse, Pig, Lizard (100%); Marmoset, Panda, Dog, Rabbit, Platypus (92%); Mouse, Rat, Hamster, Opossum (85%).
<b>Specificity:</b>	Human RASSF1 / RASSF1A. This antibody is expected to recognize reported isoforms A, C and D (NP_009113.3; NP_733831.1; NP_733832.1) .
<b>Epitope:</b>	Internal
<b>Reactivity:</b>	Human, Gorilla, Gibbon, Bat, Bovine, Horse, Pig
<b>Predicted Reactivity:</b>	Monkey, Dog, Rabbit
<b>Purification:</b>	Immunoaffinity purified
<b>Presentation:</b>	Tris-buffered saline, pH 7.3, 0.5% BSA, 0.02% sodium azide
<b>Recommended Storage:</b>	Store at -20°C. Minimize freezing and thawing.
<b>Usage Summary:</b>	Immunohistochemistry: LS-B4170 was validated for use in immunohistochemistry on a panel of 21 formalin-fixed, paraffin-embedded (FFPE) human tissues after heat induced antigen retrieval in pH 6.0 citrate buffer. After incubation with the primary antibody, slides were incubated with biotinylated secondary antibody, followed by alkaline phosphatase-streptavidin and chromogen. The stained slides were evaluated by a pathologist to confirm staining specificity. The optimal working concentration for LS-B4170 was determined to be 3.75 ug/ml
<b>Uses:</b>	IHC - Paraffin (3.75 µg/ml) (Optimal dilution to be determined by the researcher)
<b>Size:</b>	50 µg
<b>Concentration:</b>	0.5 mg/ml

**Immunohistochemistry Image:**



Anti-RASSF1 antibody IHC of human liver. Immunohistochemistry of formalin-fixed, paraffin-embedded tissue after heat-induced antigen retrieval. Antibody LS-B4170 concentration 3.75 ug/ml.

**Immunohistochemistry Image:**



Anti-RASSF1 antibody IHC of human brain, cortex. Immunohistochemistry of formalin-fixed, paraffin-embedded tissue after heat-induced antigen retrieval. Antibody LS-B4170 concentration 3.75 ug/ml.

**Requested From:**

Japan

Laboratory Reagent For In Vitro Research Use Only

Not for resale without prior written consent from LifeSpan BioSciences, Inc.

Created on 9/23/2014

© 2014 LifeSpan BioSciences