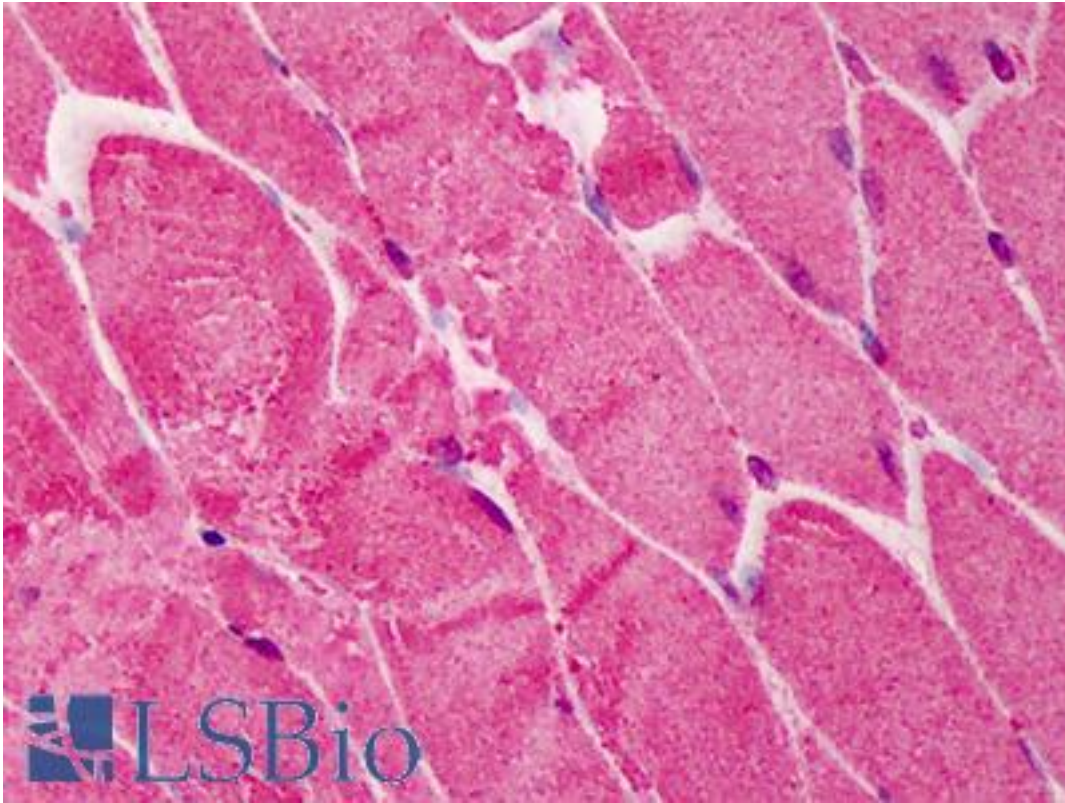


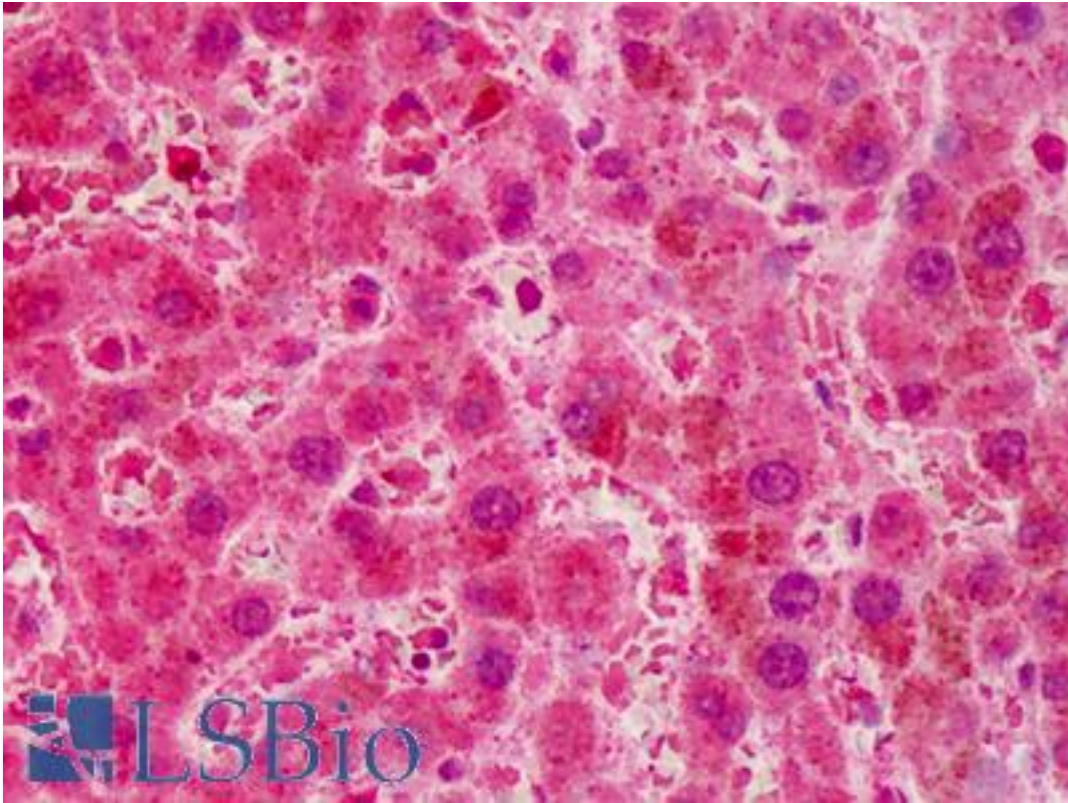
RING1B / BAP1 / RNF2 Goat anti-Human Polyclonal (aa189-201) Antibody - LS-B417 - LSBio	
CatalogID:	LS-B417
Validation:	This antibody replaces catalog number LS-C19098. It has been validated for use in the following assays: IHC.
Target:	ring finger protein 2 (RNF2)
Synonyms:	RNF2 Antibody, DING Antibody, HIP2-interacting protein 3 Antibody, Protein DinG Antibody, Ring finger protein 2 Antibody, RING finger protein BAP-1 Antibody, BAP-1 Antibody, HIPI3 Antibody, RING finger protein 1B Antibody, RING1B Antibody, RING2 Antibody
Host	RNF2 antibody was produced in Goat
Clonality:	Polyclonal
Immunogen Species:	RING1B / BAP1 / RNF2 antibody was raised against Human
Antigen Type:	Synthetic peptide
Immunogen:	RING1B / BAP1 / RNF2 antibody was raised against synthetic peptide from human RNF2.
Specificity:	aa 189-201 of human RING1B protein.
Epitope:	aa189-201
Reactivity:	Human, Chimpanzee, Orangutan, Mouse, Rat, Bovine, Dog, Chicken, Frog
Purification:	Immunoaffinity purified
Presentation:	0.02 M potassium phosphate, 0.15 M sodium chloride, pH 7.2, 0.01% sodium azide.
Recommended Storage:	+4°C or -20°C, Avoid repeated freezing and thawing.
Usage Summary:	Immunohistochemistry: LS-B417 was validated for use in immunohistochemistry on a panel of 21 formalin-fixed, paraffin-embedded (FFPE) human tissues after heat induced antigen retrieval in pH 6.0 citrate buffer. After incubation with the primary antibody, slides were incubated with biotinylated secondary antibody, followed by alkaline phosphatase-streptavidin and chromogen. The stained slides were evaluated by a pathologist to confirm staining specificity. The optimal working concentration for LS-B417 was determined to be 2.5 ug/ml.
Uses:	IHC - Paraffin (2.5 µg/ml), Immunofluorescence, Western blot (1:500 - 1:2000), ELISA (1:5000 - 1:25000) (Optimal dilution to be determined by the researcher)
Size:	50 µg

Immunohistochemistry Image:



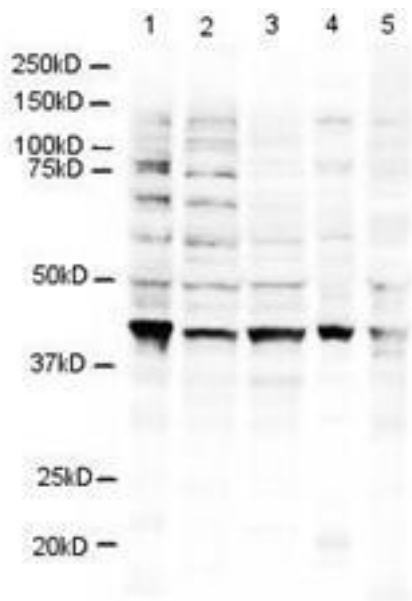
Anti-RNF2 antibody IHC of human skeletal muscle. Immunohistochemistry of formalin-fixed, paraffin-embedded tissue after heat-induced antigen retrieval. Antibody LS-B417 concentration 2.5 ug/ml.

Immunohistochemistry Image:



Anti-RNF2 antibody IHC of human liver. Immunohistochemistry of formalin-fixed, paraffin-embedded tissue after heat-induced antigen retrieval. Antibody LS-B417 concentration 2.5 ug/ml.

Western Blot Image:



Anti-RING1B Antibody - Western Blot. Western blot of Affinity Purified anti-RING1B antibody shows detection of a 38 kD band corresponding to human RING1B in 3T3 (lane 1), U937 (lane 2), Jurkat (lane 3), mouse brain (lane 4) and CHO-K1 (lane 5) cell lysates. Approximately 20 ug of lysate was run on a SDS-PAGE and transferred onto nitrocellulose followed by reaction with a 1:500 dilution of anti-RING1B antibody incubated at room temperature. Signal was detected using standard techniques.

Requested From:

Japan

Laboratory Reagent For In Vitro Research Use Only

Not for resale without prior written consent from LifeSpan BioSciences, Inc.

Created on 9/23/2014

© 2014 LifeSpan BioSciences