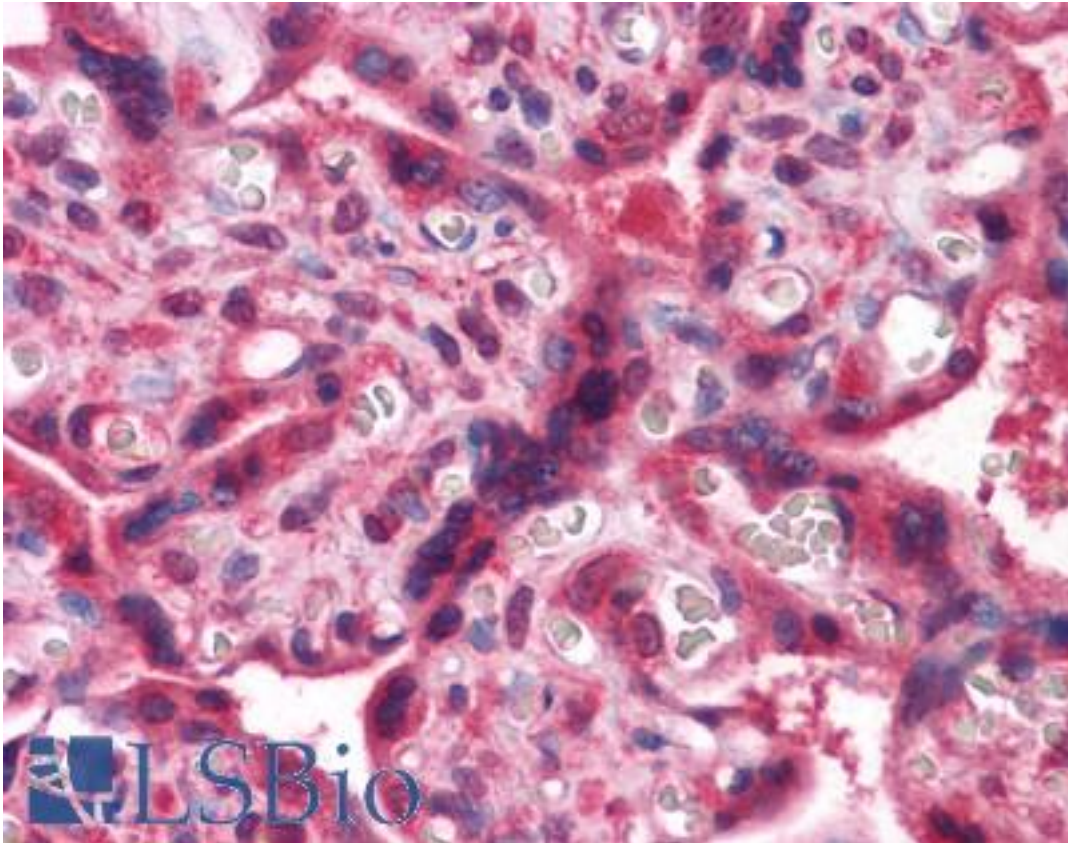


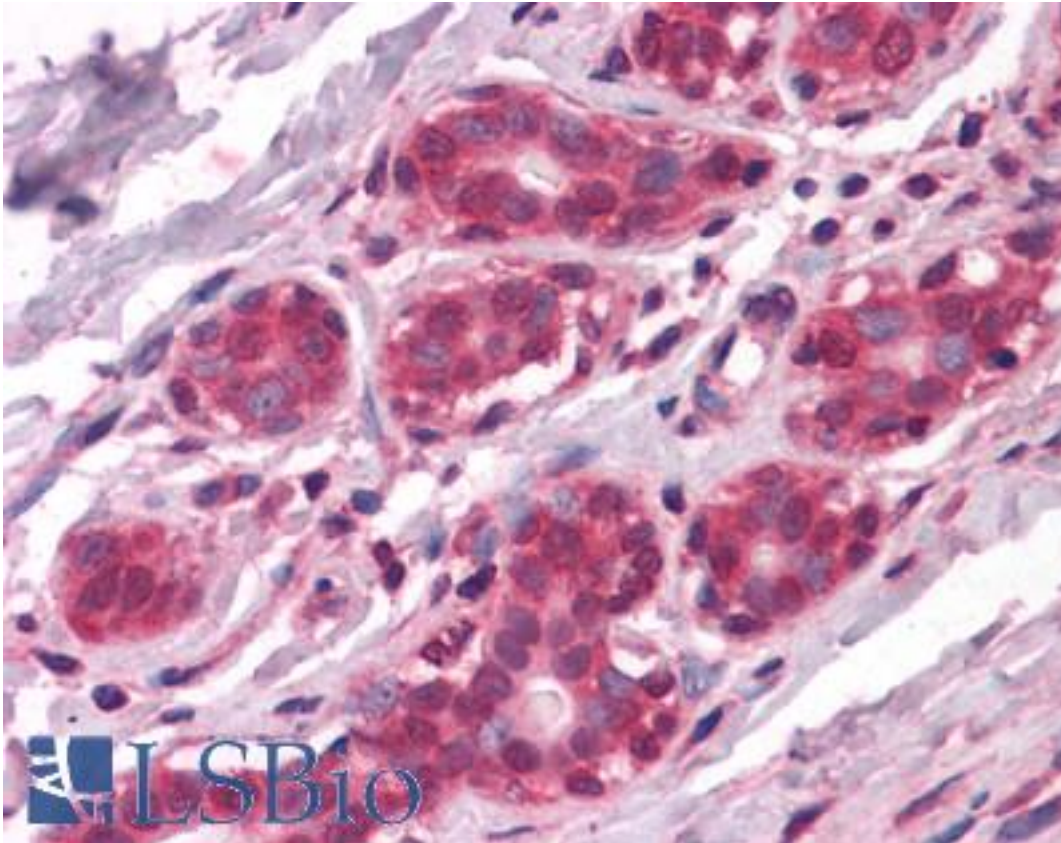
NME1 / NM23 Mouse anti-Human Monoclonal (4B2) Antibody - LS-B4164 - LSBio	
CatalogID:	LS-B4164
Validation:	This antibody replaces catalog number LS-C109165. It has been validated for use in the following assays: IHC-P.
Target:	NME/NM23 nucleoside diphosphate kinase 1 (NME1)
Synonyms:	NME1 Antibody, AWD Antibody, NDKA Antibody, NB Antibody, NDK A Antibody, NM23-H1 Antibody, NDP kinase A Antibody, NDPK-A Antibody, NDPKA Antibody, GAAD Antibody, Granzyme A-activated DNase Antibody, NBS Antibody, NM23 Antibody
Host	NME1 antibody was produced in Mouse
Clonality:	Monoclonal
Isotype:	IgG1
Clone Name:	4B2
Immunogen Species:	NME1 / NM23 antibody was raised against Human
Immunogen:	NME1 / NM23 antibody was raised against purified recombinant fragment of human NME1 expressed in E. coli.
Specificity:	Human NME1
Reactivity:	Human
Purification:	Ascites
Presentation:	Ascitic fluid, 0.03% sodium azide
Recommended Storage:	Long term: -20°C; Short term: +4°C. Avoid repeat freeze-thaw cycles.
Uses:	IHC - Paraffin (1:200), Immunofluorescence (1:200 - 1:1000), Western blot (1:500 - 1:2000), ELISA (Optimal dilution to be determined by the researcher)
Size:	50 µl

Immunohistochemistry Image:



Anti-NME1 antibody IHC of human placenta. Immunohistochemistry of formalin-fixed, paraffin-embedded tissue after heat-induced antigen retrieval. Antibody LS-B4164 dilution 1:200.

Immunohistochemistry Image:



Anti-NME1 antibody IHC of human breast. Immunohistochemistry of formalin-fixed, paraffin-embedded tissue after heat-induced antigen retrieval. Antibody LS-B4164 dilution 1:200.

Requested From:

Japan

Laboratory Reagent For In Vitro Research Use Only

Not for resale without prior written consent from LifeSpan BioSciences, Inc.

Created on 9/23/2014

© 2014 LifeSpan BioSciences