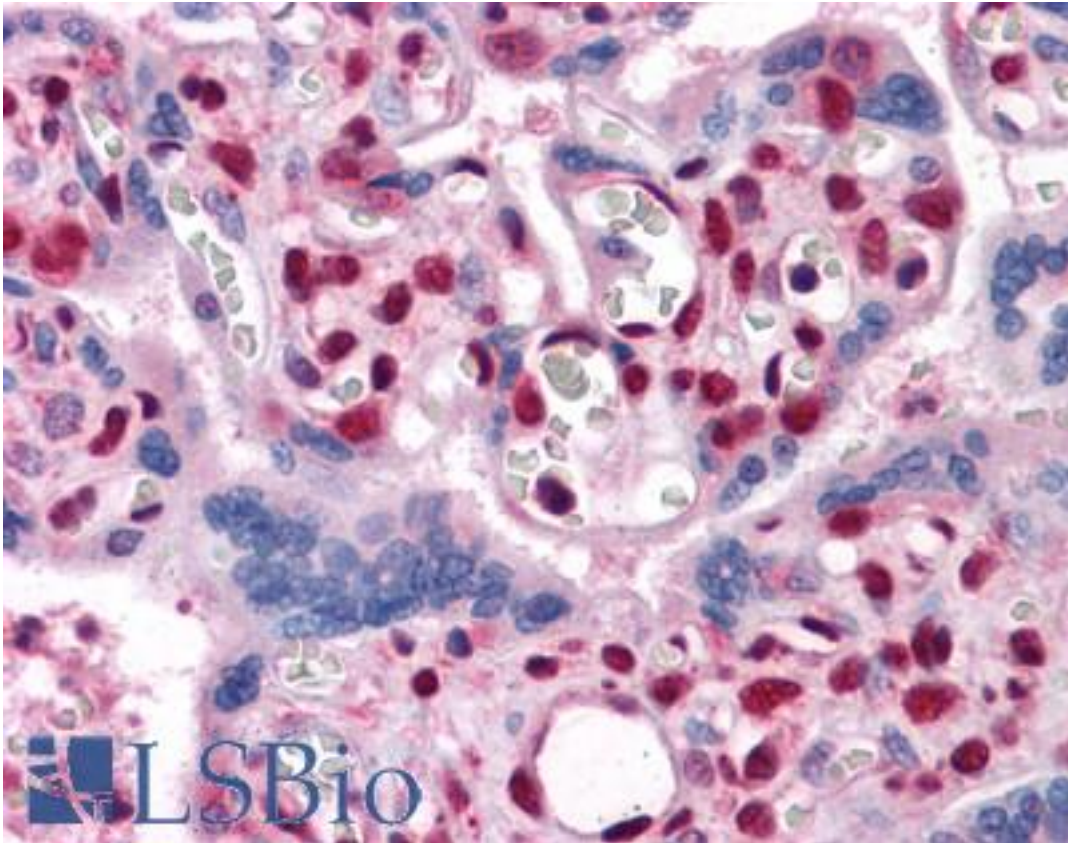


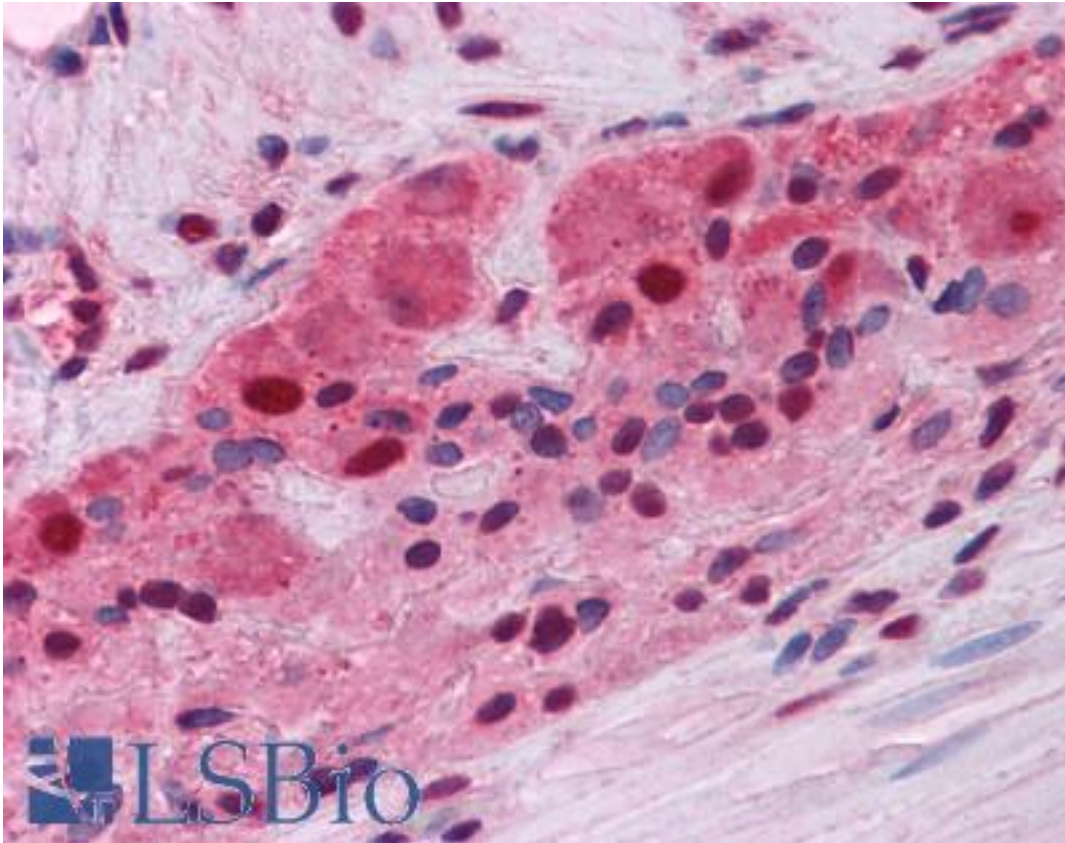
MUM1 Mouse anti-Human Monoclonal (4G10) Antibody - LS-B4162 - LSBio	
CatalogID:	LS-B4162
Validation:	This antibody replaces catalog number LS-C109162. It has been validated for use in the following assays: IHC-P.
Target:	melanoma associated antigen (mutated) 1 (MUM1)
Synonyms:	MUM1 Antibody, EXPAND1 Antibody, HSPC211 Antibody, MUM-1 Antibody, Protein expandere Antibody
Host	MUM1 antibody was produced in Mouse
Clonality:	Monoclonal
Isotype:	IgG1
Clone Name:	4G10
Immunogen Species:	MUM1 antibody was raised against Human
Immunogen:	MUM1 antibody was raised against purified recombinant fragment of human MUM1 expressed in E. coli.
Specificity:	Human MUM1
Reactivity:	Human
Purification:	Ascites
Presentation:	Ascitic fluid, 0.03% sodium azide
Recommended Storage:	Long term: -20°C; Short term: +4°C. Avoid repeat freeze-thaw cycles.
Uses:	IHC - Paraffin (1:200), Western blot (1:500 - 1:2000), ELISA (Optimal dilution to be determined by the researcher)
Size:	50 µl

Immunohistochemistry Image:



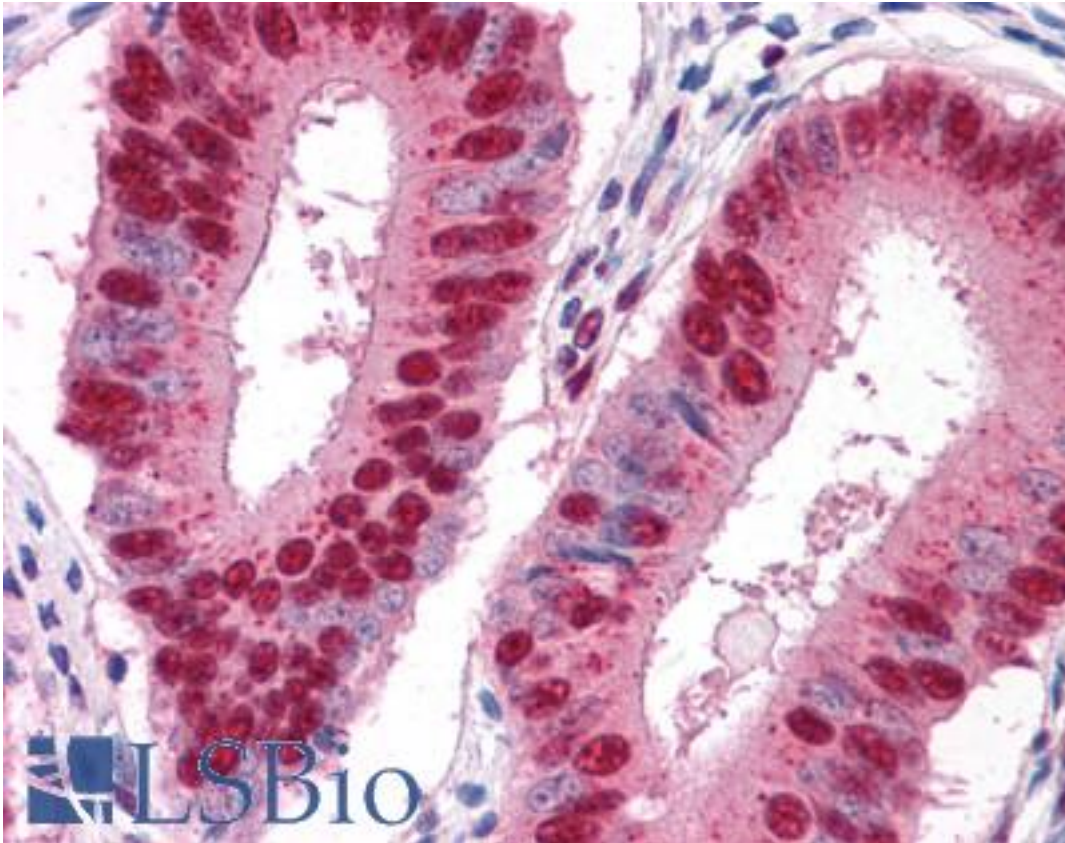
Anti-MUM1 antibody IHC of human placenta. Immunohistochemistry of formalin-fixed, paraffin-embedded tissue after heat-induced antigen retrieval. Antibody LS-B4162 dilution 1:200.

Immunohistochemistry Image:



Anti-MUM1 antibody IHC of human small intestine, myenteric plexus. Immunohistochemistry of formalin-fixed, paraffin-embedded tissue after heat-induced antigen retrieval. Antibody LS-B4162 dilution 1:200.

Immunohistochemistry Image:



Anti-MUM1 antibody IHC of human uterus. Immunohistochemistry of formalin-fixed, paraffin-embedded tissue after heat-induced antigen retrieval. Antibody LS-B4162 dilution 1:200.

Requested From:

Japan

Laboratory Reagent For In Vitro Research Use Only

Not for resale without prior written consent from LifeSpan BioSciences, Inc.

Created on 9/23/2014

© 2014 LifeSpan BioSciences