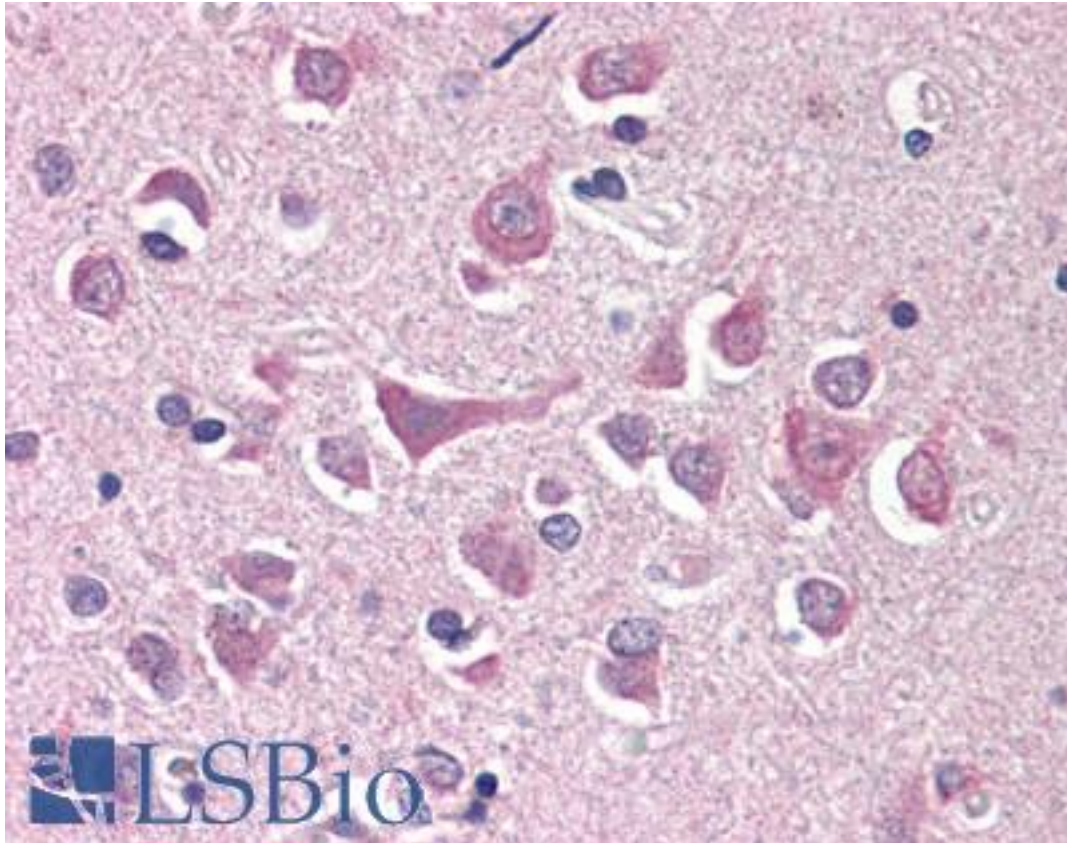


RFFL Rabbit anti-Human Polyclonal (aa1-363) Antibody - LS-B416 - LSBio

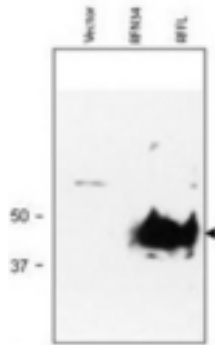
CatalogID:	LS-B416
Validation:	This antibody replaces catalog number LS-C19045. It has been validated for use in the following assays: IHC.
Target:	ring finger and FYVE-like domain containing E3 ubiquitin protein ligase (RFFL)
Synonyms:	RFFL Antibody, CARP2 Antibody, Caspase regulator CARP2 Antibody, FRING Antibody, RIFIFYLIN Antibody, RNF189 Antibody, RNF34L Antibody, RING finger protein 34-like Antibody, CARP-2 Antibody, RING finger protein 189 Antibody
Host	RFFL antibody was produced in Rabbit
Clonality:	Polyclonal
Immunogen Species:	RFFL antibody was raised against Human
Immunogen:	RFFL antibody was raised against recombinant human RFFL.
Specificity:	Amino acids 1-363 of human RFFL protein.
Epitope:	aa1-363
Reactivity:	Human
Purification:	Protein A purified
Presentation:	0.02 M potassium phosphate, 0.15 M sodium chloride, pH 7.2, 0.01% sodium azide.
Recommended Storage:	+4°C or -20°C, Avoid repeated freezing and thawing.
Usage Summary:	Immunohistochemistry: LS-B416 was validated for use in immunohistochemistry on a panel of 21 formalin-fixed, paraffin-embedded (FFPE) human tissues after heat induced antigen retrieval in pH 6.0 citrate buffer. After incubation with the primary antibody, slides were incubated with biotinylated secondary antibody, followed by alkaline phosphatase-streptavidin and chromogen. The stained slides were evaluated by a pathologist to confirm staining specificity. The optimal working concentration for LS-B416 was determined to be 5 ug/ml.
Uses:	IHC - Paraffin (5 µg/ml), Immunofluorescence, Western blot (1:500 - 1:3000), ELISA (1:4000 - 1:20000) (Optimal dilution to be determined by the researcher)
Size:	50 µg
Concentration:	1 mg/ml

Immunohistochemistry Image:



Anti-RFFL antibody IHC of human brain, cortex. Immunohistochemistry of formalin-fixed, paraffin-embedded tissue after heat-induced antigen retrieval. Antibody LS-B416 concentration 5 ug/ml.

Western Blot Image:



Anti-RFFL Antibody - Western Blot. Western blot of Protein A Purified anti-RFFL antibody shows detection of RFFL (arrowhead) in lysate. Lanes correspond to empty vector 293T cell lysate (mock, left); RNF34 transfected lysate (middle) and RFFL transfected lysate (right), are shown using 20 ul of lysate per lane. Lysates were prepared from equivalent numbers of cells. Data presented demonstrate that this reagent is specific for RFFL. After SDS-PAGE and transfer, the membrane was probed with the primary antibody diluted to 1:1000 using 5% BLOTTO, 0.1% Tween-20 in PBS as the diluent. Incubation occurred for 1 h at room temperature. Personal Communication, Srinivasa Srinivasula, CCR-NCI, Bethesda, MD.

Requested From:

Japan

Laboratory Reagent For In Vitro Research Use Only

Not for resale without prior written consent from LifeSpan BioSciences, Inc.

Created on 9/23/2014

© 2014 LifeSpan BioSciences