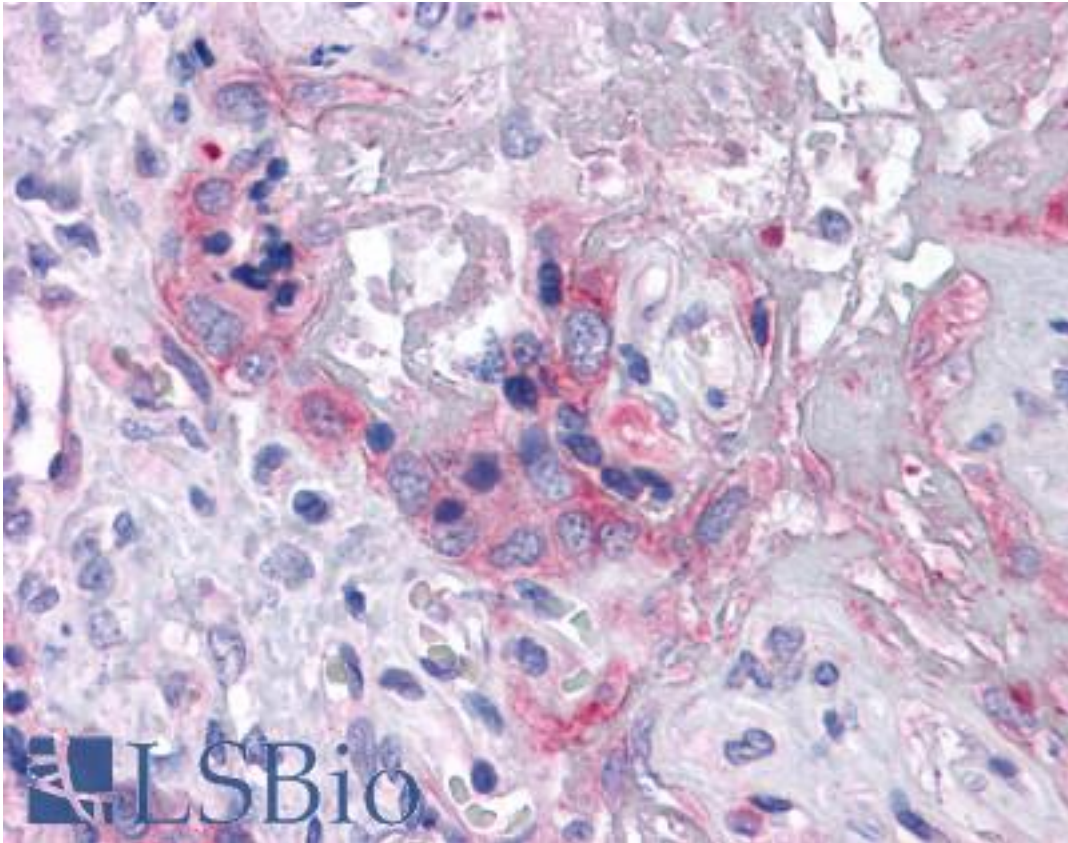


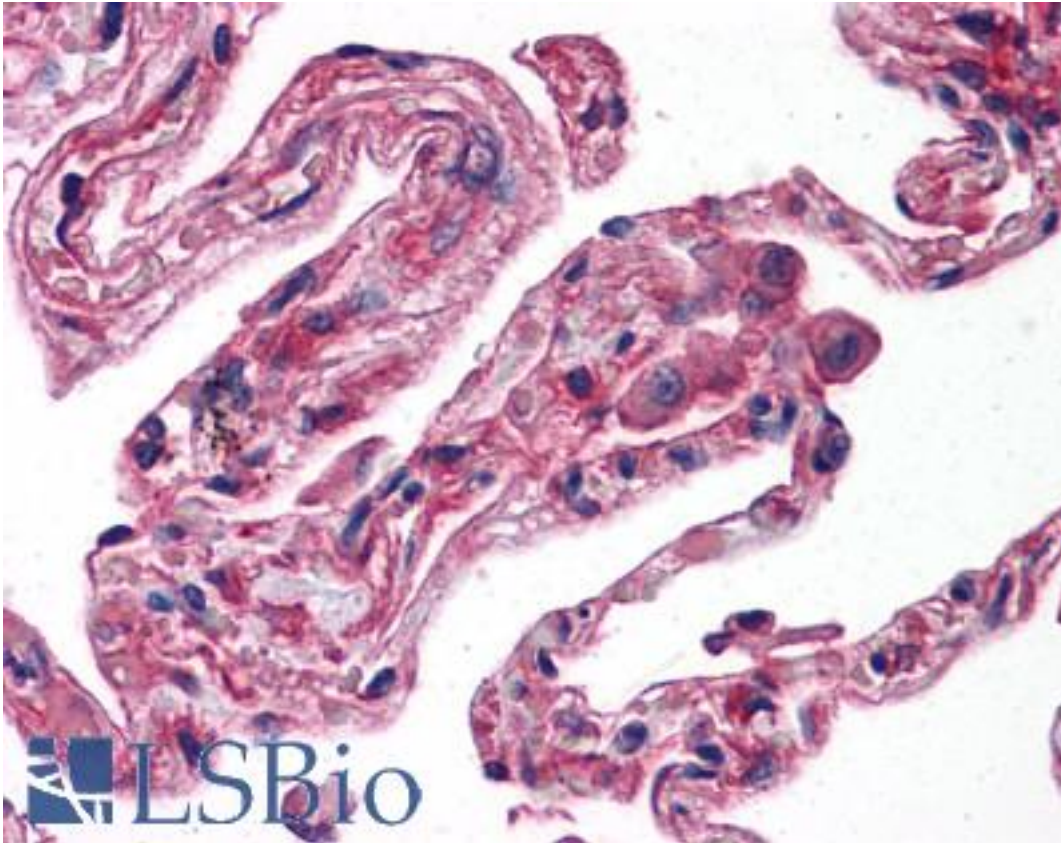
ERN1 / IRE1 Mouse anti-Human Monoclonal (9F2) Antibody - LS-B4154 - LSBio	
<b>CatalogID:</b>	LS-B4154
<b>Validation:</b>	This antibody replaces catalog number LS-C109140. It has been validated for use in the following assays: IHC-P.
<b>Target:</b>	endoplasmic reticulum to nucleus signaling 1 (ERN1)
<b>Synonyms:</b>	ERN1 Antibody, ER to nucleus signalling 1 Antibody, Inositol-requiring enzyme 1 Antibody, Inositol-requiring protein 1 Antibody, Ire1-alpha Antibody, IRE1a Antibody, HIRE1p Antibody, IRE1 Antibody, Inositol-requiring 1 Antibody, IRE1P Antibody
<b>Family / Subfamily:</b>	Protein Kinase / IRE
<b>Host</b>	ERN1 antibody was produced in Mouse
<b>Clonality:</b>	Monoclonal
<b>Isotype:</b>	IgG1
<b>Clone Name:</b>	9F2
<b>Immunogen Species:</b>	ERN1 / IRE1 antibody was raised against Human
<b>Antigen Type:</b>	Recombinant protein
<b>Immunogen:</b>	ERN1 / IRE1 antibody was raised against purified recombinant fragment of human ERN1(aa282-433) expressed in E. Coli.
<b>Specificity:</b>	Human ERN1
<b>Reactivity:</b>	Human
<b>Purification:</b>	Ascites
<b>Presentation:</b>	Ascitic fluid, 0.03% sodium azide
<b>Recommended Storage:</b>	Long term: -20°C; Short term: +4°C. Avoid repeat freeze-thaw cycles.
<b>Uses:</b>	IHC - Paraffin (1:200), Immunofluorescence (1:200 - 1:1000), Western blot (1:500 - 1:2000), Flow Cytometry (1:200 - 1:400), ELISA (Optimal dilution to be determined by the researcher)
<b>Size:</b>	50 µl

**Immunohistochemistry Image:**



Anti-ERN1 / IRE1 antibody IHC of human placenta. Immunohistochemistry of formalin-fixed, paraffin-embedded tissue after heat-induced antigen retrieval. Antibody LS-B4154 dilution 1:200.

**Immunohistochemistry Image:**



Anti-ERN1 / IRE1 antibody IHC of human lung. Immunohistochemistry of formalin-fixed, paraffin-embedded tissue after heat-induced antigen retrieval. Antibody LS-B4154 dilution 1:200.

**Requested From:**

Japan

Laboratory Reagent For In Vitro Research Use Only

Not for resale without prior written consent from LifeSpan BioSciences, Inc.

Created on 9/23/2014

© 2014 LifeSpan BioSciences