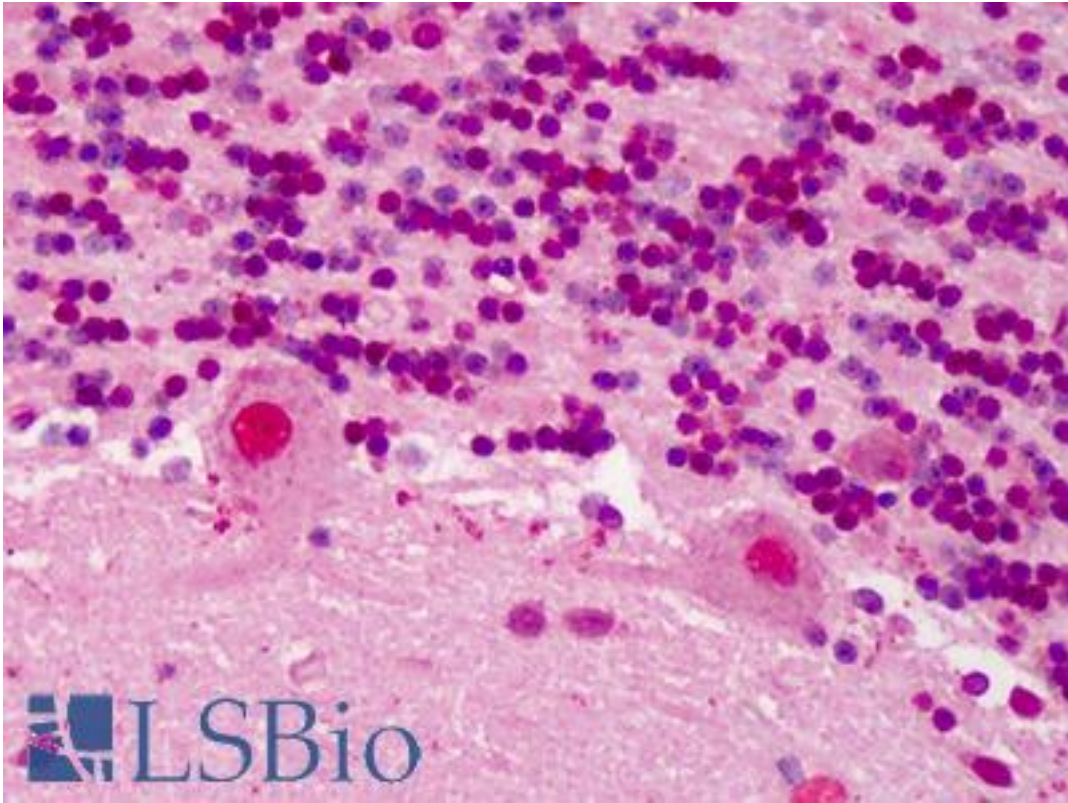


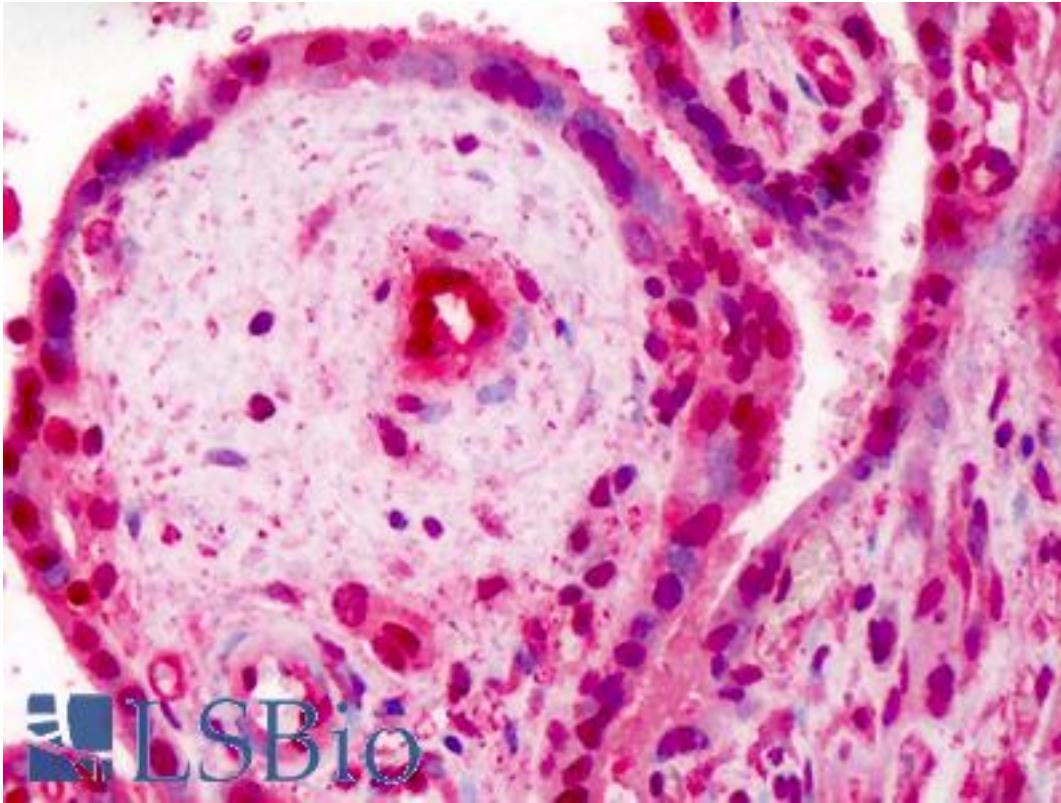
ROC1 / RBX1 Rabbit anti-Human Polyclonal (C-Terminus) Antibody - LS-B415 - LSBio	
CatalogID:	LS-B415
Validation:	This antibody replaces catalog number LS-C19000. It has been validated for use in the following assays: IHC.
Target:	ring-box 1, E3 ubiquitin protein ligase (RBX1)
Synonyms:	RBX1 Antibody, Regulator of cullins 1 Antibody, RING box protein 1 Antibody, ROC1 Antibody, TESTICAN Antibody, Ring-box 1 Antibody, RNF75 Antibody, BA554C12.1 Antibody, Protein ZYP Antibody, RING finger protein 75 Antibody, RING-box protein 1 Antibody, ZYP protein Antibody
Host	RBX1 antibody was produced in Rabbit
Clonality:	Polyclonal
Immunogen Species:	ROC1 / RBX1 antibody was raised against Human
Antigen Type:	Synthetic peptide
Immunogen:	ROC1 / RBX1 antibody was raised against synthetic peptide from human RBX1.
Specificity:	Amino acids 94-108 of Human ROC1 (C-terminal) coupled to KLH.
Epitope:	C-Terminus
Reactivity:	Human
Purification:	Delipidated and defibrinated
Presentation:	0.01% sodium azide.
Recommended Storage:	+4°C or -20°C, Avoid repeated freezing and thawing.
Usage Summary:	Immunohistochemistry: LS-B415 was validated for use in immunohistochemistry on a panel of 21 formalin-fixed, paraffin-embedded (FFPE) human tissues after heat induced antigen retrieval in pH 6.0 citrate buffer. After incubation with the primary antibody, slides were incubated with biotinylated secondary antibody, followed by alkaline phosphatase-streptavidin and chromogen. The stained slides were evaluated by a pathologist to confirm staining specificity. The optimal working concentration for LS-B415 was determined to be 1:500.
Uses:	IHC - Paraffin (1:500), Western blot (1:500 - 1:1000), Immunoprecipitation, ELISA (1:2000 - 1:10000) (Optimal dilution to be determined by the researcher)
Size:	50 µl

Immunohistochemistry Image:



Anti-RBX1 antibody IHC of human brain, cerebellum. Immunohistochemistry of formalin-fixed, paraffin-embedded tissue after heat-induced antigen retrieval. Antibody LS-B415 dilution 1:500.

Immunohistochemistry Image:



Anti-RBX1 antibody IHC of human placenta. Immunohistochemistry of formalin-fixed, paraffin-embedded tissue after heat-induced antigen retrieval. Antibody LS-B415 dilution 1:500.

Requested From:

Japan

Laboratory Reagent For In Vitro Research Use Only

Not for resale without prior written consent from LifeSpan BioSciences, Inc.

Created on 9/23/2014

© 2014 LifeSpan BioSciences