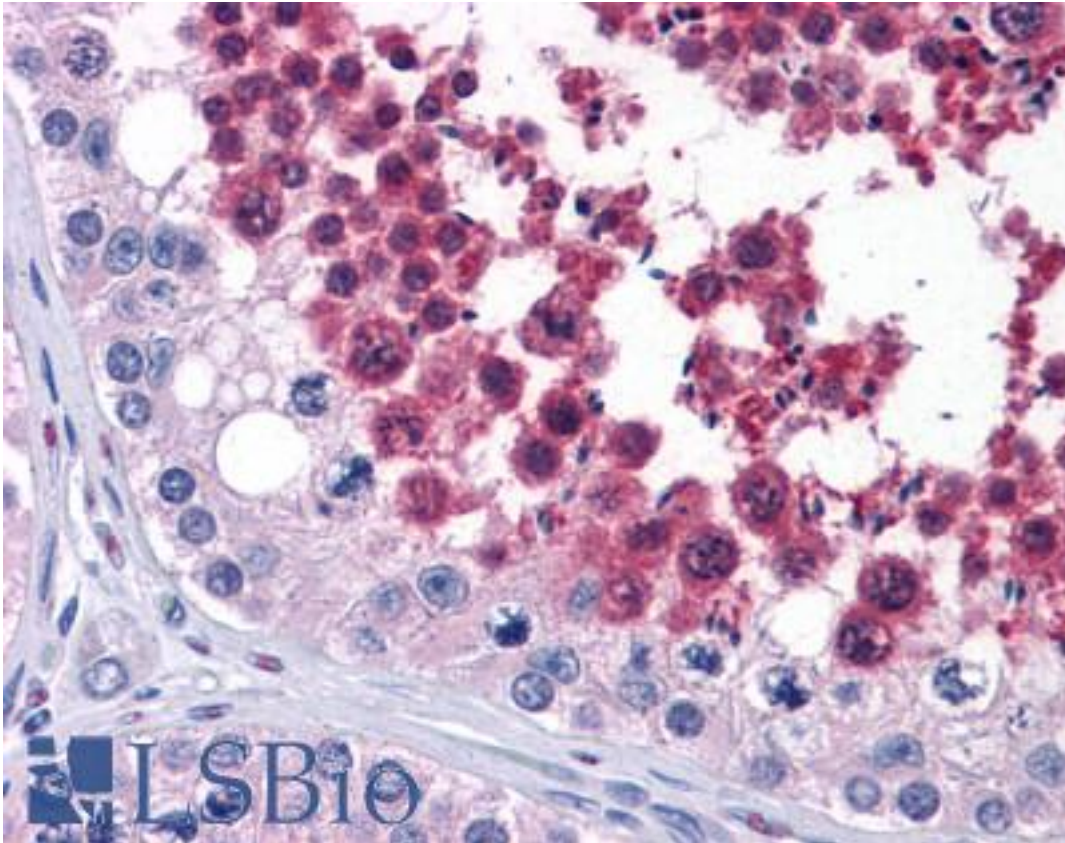


CDC25C Mouse anti-Human Monoclonal (1F12) Antibody - LS-B4149 - LSBio	
CatalogID:	LS-B4149
Validation:	This antibody replaces catalog number LS-C109136. It has been validated for use in the following assays: IHC-P.
Target:	cell division cycle 25C (CDC25C)
Synonyms:	CDC25C Antibody, CDC25 Antibody, CDC25C phosphatase Antibody, CDC25Hu3 Antibody, Cell division cycle 25C Antibody, Phosphotyrosine phosphatase Antibody, PPP1R60 Antibody, M-phase inducer phosphatase 3 Antibody, Mitosis inducer CDC25 Antibody
Family / Subfamily:	Protein Phosphatase / CDC25
Host	CDC25C antibody was produced in Mouse
Clonality:	Monoclonal
Isotype:	IgG1
Clone Name:	1F12
Immunogen Species:	CDC25C antibody was raised against Human
Immunogen:	CDC25C antibody was raised against purified recombinant fragment of human CDC25C expressed in E. coli.
Specificity:	Human CDC25C
Reactivity:	Human
Purification:	Ascites
Presentation:	Ascitic fluid, 0.03% sodium azide
Recommended Storage:	Long term: -20°C; Short term: +4°C. Avoid repeat freeze-thaw cycles.
Uses:	IHC - Paraffin (1:200), Western blot (1:500 - 1:2000), ELISA (Optimal dilution to be determined by the researcher)
Size:	50 µl

Immunohistochemistry Image:



Anti-CDC25C antibody IHC of human testis. Immunohistochemistry of formalin-fixed, paraffin-embedded tissue after heat-induced antigen retrieval. Antibody LS-B4149 dilution 1:200.

Requested From:

Japan

Laboratory Reagent For In Vitro Research Use Only

Not for resale without prior written consent from LifeSpan BioSciences, Inc.

Created on 9/23/2014

© 2014 LifeSpan BioSciences