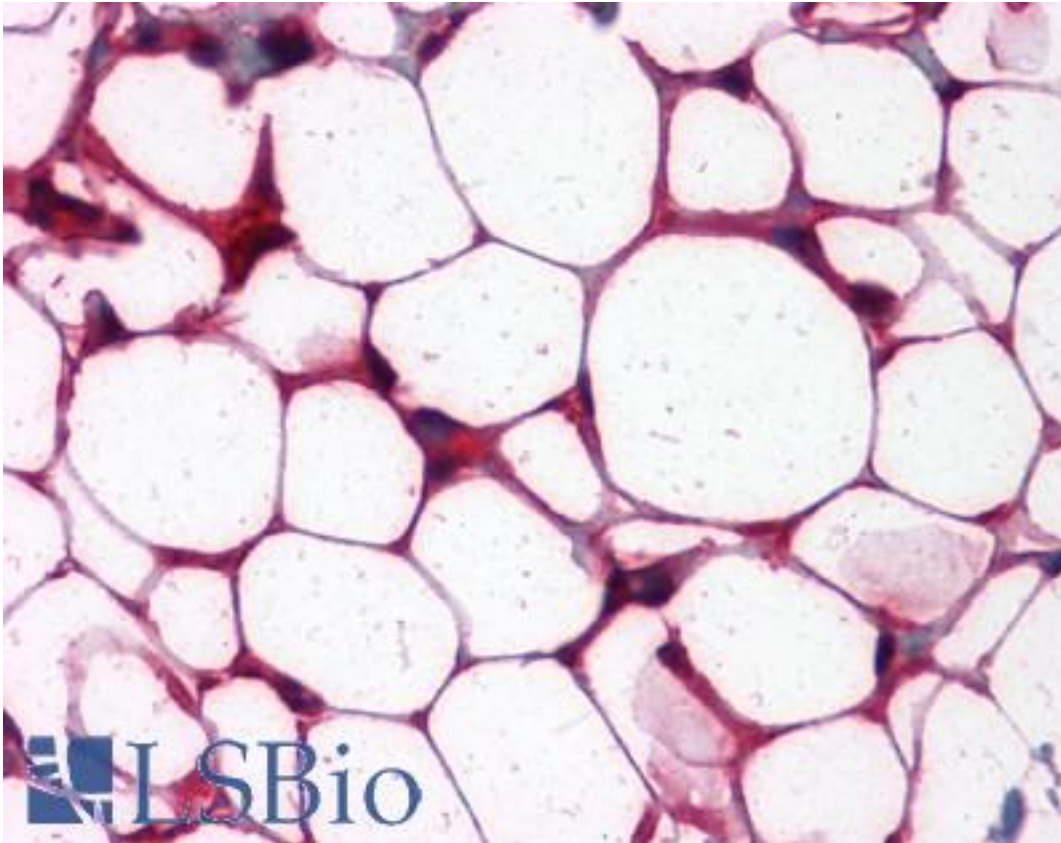


ETS1 / ETS-1 Mouse anti-Human Monoclonal (8A8) Antibody - LS-B4147 - LSBio	
<b>CatalogID:</b>	LS-B4147
<b>Validation:</b>	This antibody replaces catalog number LS-C109132. It has been validated for use in the following assays: IHC-P.
<b>Target:</b>	v-ets avian erythroblastosis virus E26 oncogene homolog 1 (ETS1)
<b>Synonyms:</b>	ETS1 Antibody, Ets protein Antibody, ETS-1 Antibody, EWSR2 Antibody, p54 Antibody, Protein C-ets-1 Antibody
<b>Family / Subfamily:</b>	Transcription factor / ETS
<b>Host</b>	ETS1 antibody was produced in Mouse
<b>Clonality:</b>	Monoclonal
<b>Isotype:</b>	IgG1
<b>Clone Name:</b>	8A8
<b>Immunogen Species:</b>	ETS1 / ETS-1 antibody was raised against Human
<b>Immunogen:</b>	ETS1 / ETS-1 antibody was raised against purified recombinant fragment of human ETS1 expressed in E. coli.
<b>Specificity:</b>	Human ETS1
<b>Reactivity:</b>	Human
<b>Purification:</b>	Ascites
<b>Presentation:</b>	Ascitic fluid, 0.03% sodium azide
<b>Recommended Storage:</b>	Long term: -20°C; Short term: +4°C. Avoid repeat freeze-thaw cycles.
<b>Uses:</b>	IHC - Paraffin (1:200), Immunofluorescence (1:200 - 1:1000), Western blot (1:500 - 1:2000), Flow Cytometry (1:200 - 1:400), ELISA (Optimal dilution to be determined by the researcher)
<b>Size:</b>	50 µl

**Immunohistochemistry Image:**



Anti-ETS1 antibody IHC of human colon-adipose. Immunohistochemistry of formalin-fixed, paraffin-embedded tissue after heat-induced antigen retrieval. Antibody LS-B4147 dilution 1:200.

**Requested From:**

Japan

Laboratory Reagent For In Vitro Research Use Only

Not for resale without prior written consent from LifeSpan BioSciences, Inc.

Created on 9/23/2014

© 2014 LifeSpan BioSciences