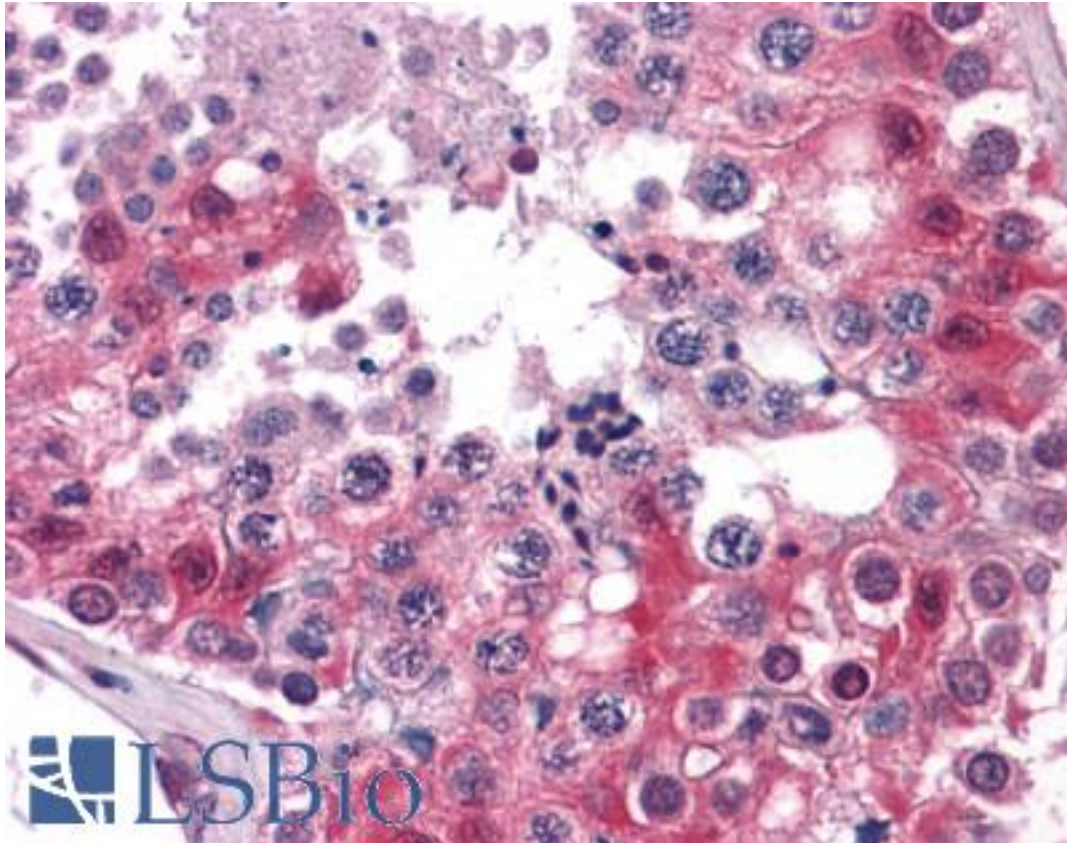


ERK1 + ERK2 Mouse anti-Human Monoclonal (3F8) Antibody - LS-B4143 - LSBio

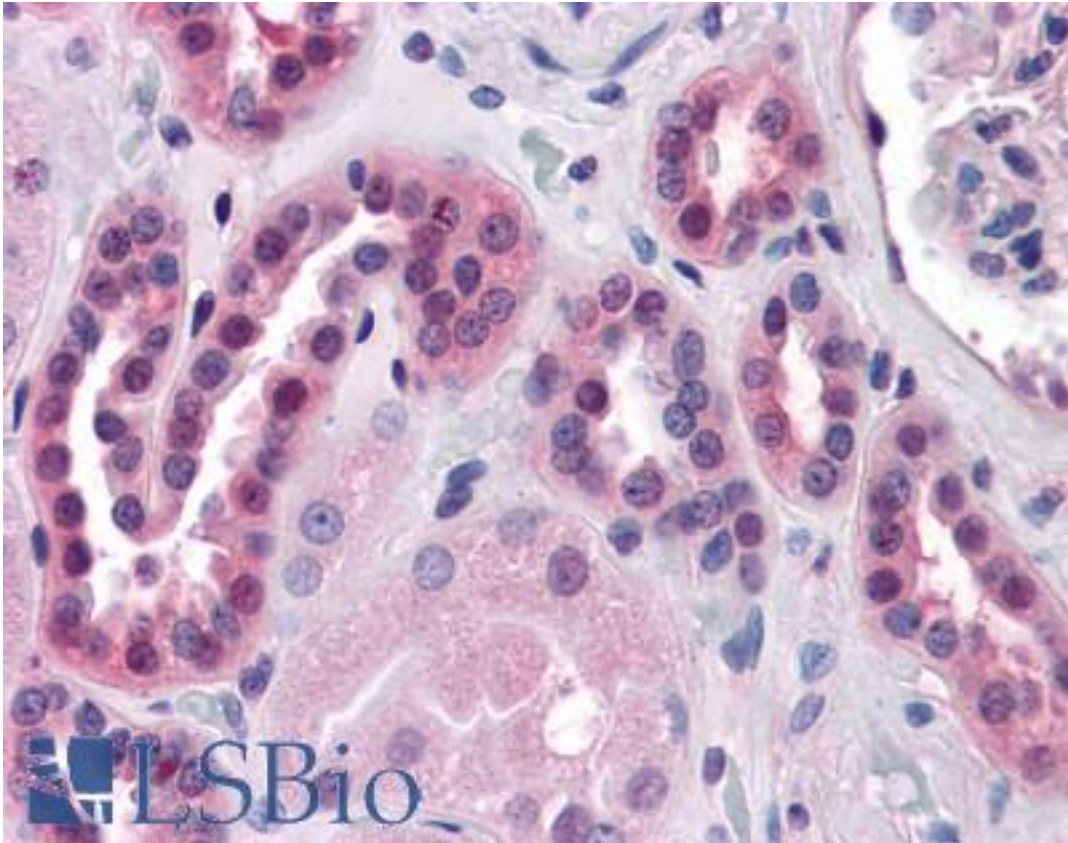
CatalogID:	LS-B4143
Validation:	This antibody replaces catalog number LS-C109128. It has been validated for use in the following assays: IHC-P.
Target:	Mitogen-activated Protein Kinase MAPK1/MAPK3/ERK1/ERK2
Host	Mitogen-activated Protein Kinase MAPK1/MAPK3/ERK1/ERK2 antibody was produced in Mouse
Clonality:	Monoclonal
Isotype:	IgG2b
Clone Name:	3F8
Immunogen Species:	ERK1 + ERK2 antibody was raised against Human
Immunogen:	ERK1 + ERK2 antibody was raised against purified recombinant fragment of human MAPK1 expressed in E. coli.
Specificity:	Human MAPK1
Reactivity:	Human, Mouse
Purification:	Ascites
Presentation:	Ascitic fluid, 0.03% sodium azide
Recommended Storage:	Long term: -20°C; Short term: +4°C. Avoid repeat freeze-thaw cycles.
Uses:	IHC - Paraffin (1:200), Western blot (1:500 - 1:2000), Flow Cytometry (1:200 - 1:400), ELISA (Optimal dilution to be determined by the researcher)
Size:	50 µl

Immunohistochemistry Image:



Anti-MAPK1 / ERK antibody IHC of human testis. Immunohistochemistry of formalin-fixed, paraffin-embedded tissue after heat-induced antigen retrieval. Antibody LS-B4143 dilution 1:200.

Immunohistochemistry Image:



Anti-MAPK1 / ERK antibody IHC of human kidney. Immunohistochemistry of formalin-fixed, paraffin-embedded tissue after heat-induced antigen retrieval. Antibody LS-B4143 dilution 1:200.

Requested From:

Japan

Laboratory Reagent For In Vitro Research Use Only

Not for resale without prior written consent from LifeSpan BioSciences, Inc.

Created on 9/23/2014

© 2014 LifeSpan BioSciences