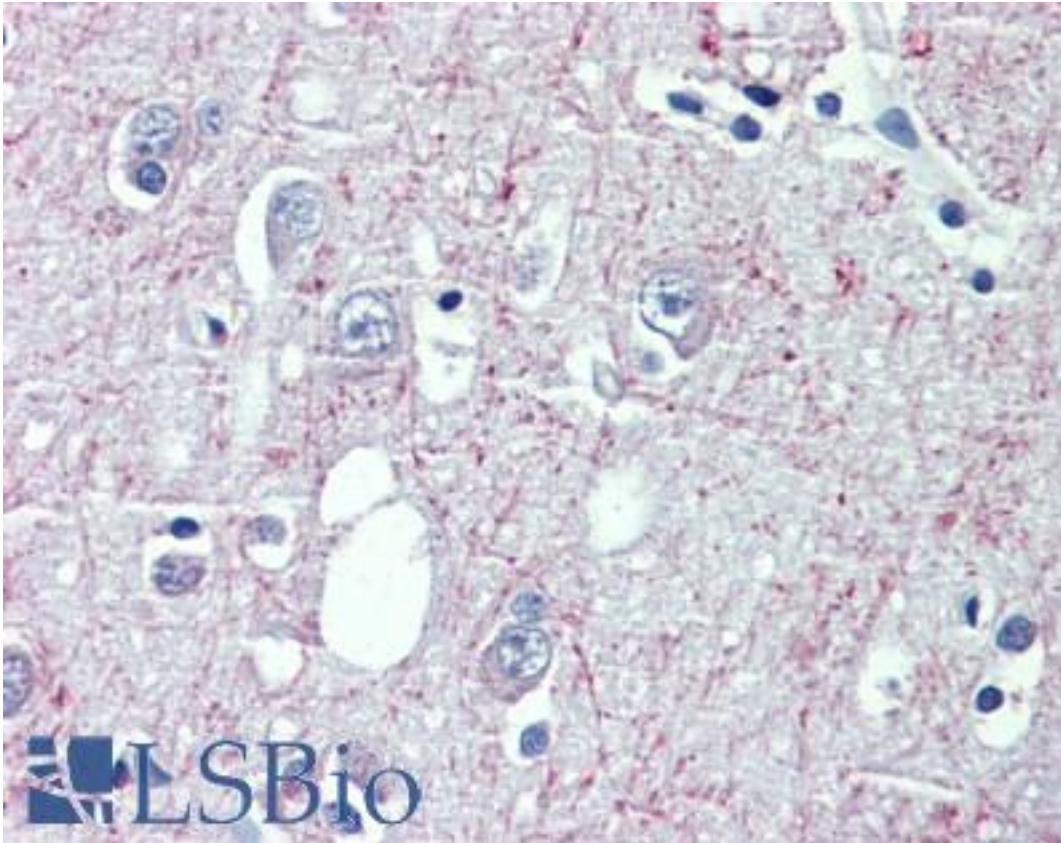


GABABR1 / GABBR1 Goat anti-Human Polyclonal (C-Terminus) Antibody - LS-B4142 - LSBio	
CatalogID:	LS-B4142
Validation:	This antibody replaces catalog number LS-C108332. It has been validated for use in the following assays: IHC-P.
Target:	gamma-aminobutyric acid (GABA) B receptor, 1 (GABBR1)
Synonyms:	GABBR1 Antibody, DJ271M21.1.1 Antibody, DJ271M21.1.2 Antibody, GABA(B) receptor Antibody, Gaba-b-r1a Antibody, GABA-BR1 Antibody, Gaba-br1a receptor Antibody, GABAB, subunit 1c Antibody, GABAB1 Antibody, GABA-B receptor 1 Antibody, Gaba-b1 Antibody, Gababr1 receptor Antibody, GPRC3A Antibody, Gabab-receptor subunit 1a Antibody, GABABR1 Antibody, GABBR1-3 Antibody, GBR1 Antibody, HGB1a Antibody, GABA-B-R1 Antibody, GB1 Antibody
Family / Subfamily:	GPCR / GABA(B)
Host	GABBR1 antibody was produced in Goat
Clonality:	Polyclonal
Immunogen Species:	GABABR1 / GABBR1 antibody was raised against Human
Antigen Type:	Synthetic peptide
Immunogen:	GABABR1 / GABBR1 antibody was raised against synthetic peptide DRLSCDGSRVHLLLYK from the C-terminus of human GABBR1 (NP_001461.1; NP_068703.1; NP_068704.2; NP_068705.2). Percent identity by BLAST analysis: Human, Gorilla, Orangutan, Gibbon, Monkey, Marmoset, Mouse, Rat, Hamster, Elephant, Panda, Bovine, Dog, Bat, Horse, Rabbit, Pig (100%); Phytophthora (80%).
Specificity:	Human GABBR1. This antibody is expected to recognize reported isoforms a, b and c (NP_001461.1, NP_068703.1, NP_068704.2 resp.).
Epitope:	C-Terminus
Reactivity:	Human, Gorilla, Orangutan, Gibbon, Monkey, Mouse, Rat, Bat, Bovine, Dog, Hamster, Horse, Pig, Rabbit
Purification:	Immunoaffinity purified
Presentation:	Tris-buffered saline, pH 7.3, 0.5% BSA, 0.02% sodium azide
Recommended Storage:	Store at -20°C. Minimize freezing and thawing.
Usage Summary:	Immunohistochemistry: LS-B4142 was validated for use in immunohistochemistry on a panel of 21 formalin-fixed, paraffin-embedded (FFPE) human tissues after heat induced antigen retrieval in pH 6.0 citrate buffer. After incubation with the primary antibody, slides were incubated with biotinylated secondary antibody, followed by alkaline phosphatase-streptavidin and chromogen. The stained slides were evaluated by a pathologist to confirm staining specificity. The optimal working concentration for LS-B4142 was determined to be 3.75 to 5 µg/ml.
Uses:	IHC - Paraffin (3.75 - 5 µg/ml) (Optimal dilution to be determined by the researcher)
Size:	50 µg
Concentration:	0.5 mg/ml

Immunohistochemistry Image:



Anti-GABBR1 antibody IHC of human brain, cortex. Immunohistochemistry of formalin-fixed, paraffin-embedded tissue after heat-induced antigen retrieval. Antibody LS-B4142 concentration 3.75 ug/ml.

Requested From:

Japan

Laboratory Reagent For In Vitro Research Use Only

Not for resale without prior written consent from LifeSpan BioSciences, Inc.

Created on 9/23/2014

© 2014 LifeSpan BioSciences