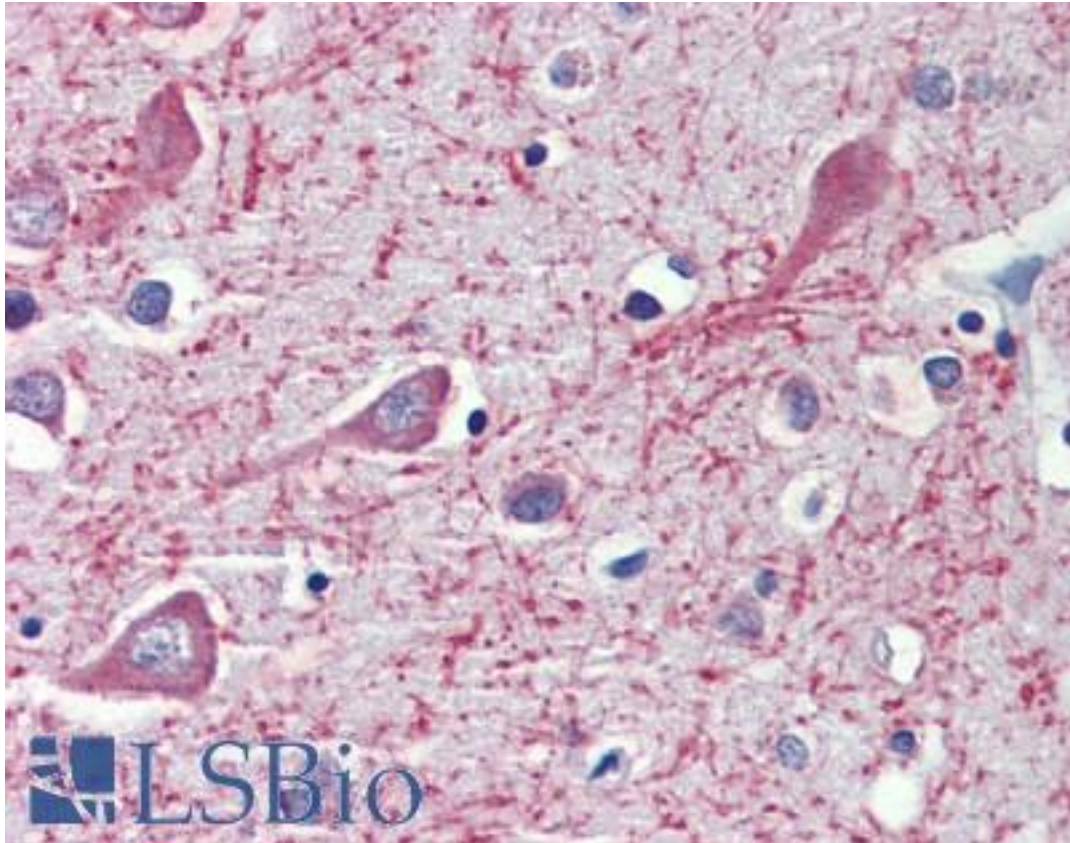


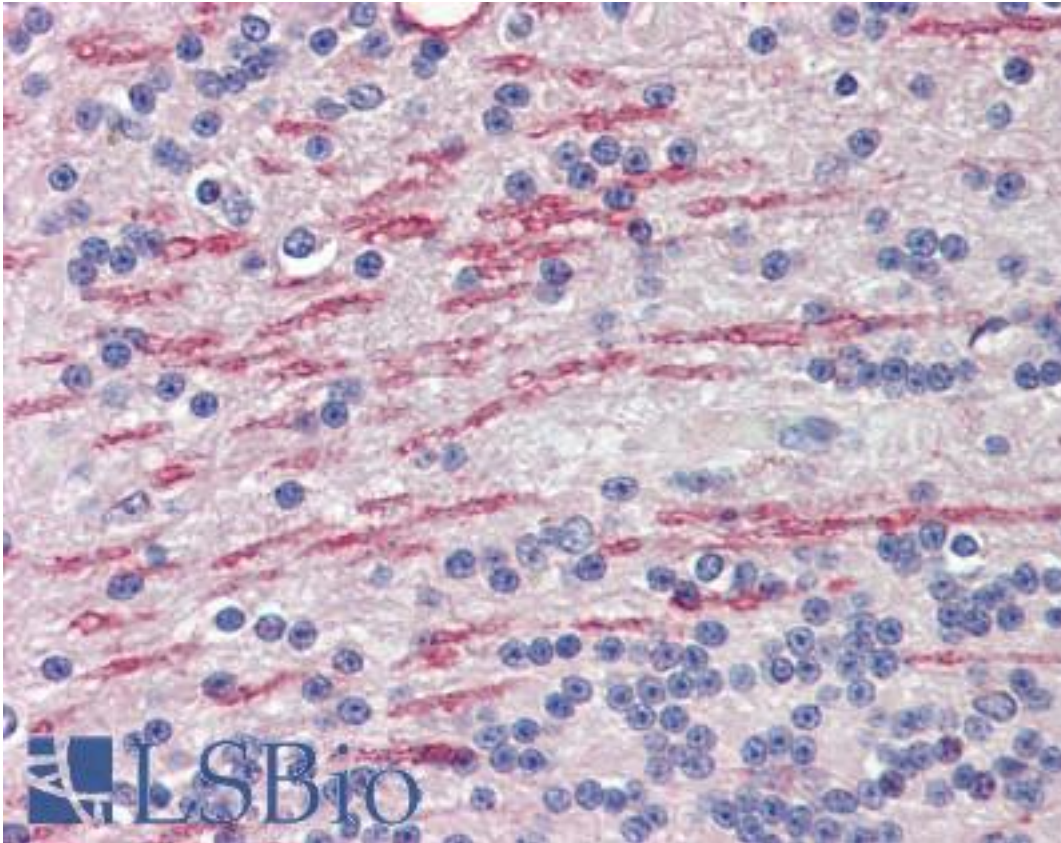
CYP26 / CYP26A1 Goat anti-Human Polyclonal (Internal) Antibody - LS-B4140 - LSBio	
<b>CatalogID:</b>	LS-B4140
<b>Validation:</b>	This antibody replaces catalog number LS-C108330. It has been validated for use in the following assays: IHC-P.
<b>Target:</b>	cytochrome P450, family 26, subfamily A, polypeptide 1 (CYP26A1)
<b>Synonyms:</b>	CYP26A1 Antibody, CYP26 Antibody, Cytochrome P450 26A1 Antibody, Cytochrome P450RAI Antibody, HP450RAI Antibody, p450RAI Antibody, p450RAI1 Antibody, Retinoic acid 4-hydroxylase Antibody, CP26 Antibody
<b>Family / Subfamily:</b>	Cytochrome P450 / not assigned-Cytochrome P450
<b>Host</b>	CYP26A1 antibody was produced in Goat
<b>Clonality:</b>	Polyclonal
<b>Immunogen Species:</b>	CYP26 / CYP26A1 antibody was raised against Human
<b>Antigen Type:</b>	Synthetic peptide
<b>Immunogen:</b>	CYP26 / CYP26A1 antibody was raised against synthetic peptide C-NLPARFTHFHGE from an internal region of human CYP26A1 (NP_000774.2; NP_476498.1). Percent identity by BLAST analysis: Human, Gorilla, Gibbon, Monkey (100%); Marmoset (92%); Rat, Hamster, Elephant, Panda, Bat, Dog, Rabbit (83%).
<b>Specificity:</b>	Human CYP26A1. This antibody is expected to recognize both reported isoforms (NP_000774.2; NP_476498.1)
<b>Epitope:</b>	Internal
<b>Reactivity:</b>	Human, Gorilla, Gibbon
<b>Predicted Reactivity:</b>	Monkey
<b>Purification:</b>	Immunoaffinity purified
<b>Presentation:</b>	Tris-buffered saline, pH 7.3, 0.5% BSA, 0.02% sodium azide
<b>Recommended Storage:</b>	Store at -20°C. Minimize freezing and thawing.
<b>Usage Summary:</b>	Immunohistochemistry: LS-B4140 was validated for use in immunohistochemistry on a panel of 21 formalin-fixed, paraffin-embedded (FFPE) human tissues after heat induced antigen retrieval in pH 6.0 citrate buffer. After incubation with the primary antibody, slides were incubated with biotinylated secondary antibody, followed by alkaline phosphatase-streptavidin and chromogen. The stained slides were evaluated by a pathologist to confirm staining specificity. The optimal working concentration for LS-B4140 was determined to be 3.75 ug/ml.
<b>Uses:</b>	IHC - Paraffin (3.75 µg/ml) (Optimal dilution to be determined by the researcher)
<b>Size:</b>	50 µg
<b>Concentration:</b>	0.5 mg/ml

**Immunohistochemistry Image:**



Anti-CYP26A1 antibody IHC of human brain, cortex. Immunohistochemistry of formalin-fixed, paraffin-embedded tissue after heat-induced antigen retrieval. Antibody LS-B4140 concentration 3.75 ug/ml.

**Immunohistochemistry Image:**



Anti-CYP26A1 antibody IHC of human brain, cerebellum, white matter. Immunohistochemistry of formalin-fixed, paraffin-embedded tissue after heat-induced antigen retrieval. Antibody LS-B4140 concentration 3.75 ug/ml.

**Requested From:**

Japan

Laboratory Reagent For In Vitro Research Use Only

Not for resale without prior written consent from LifeSpan BioSciences, Inc.

Created on 9/23/2014

© 2014 LifeSpan BioSciences