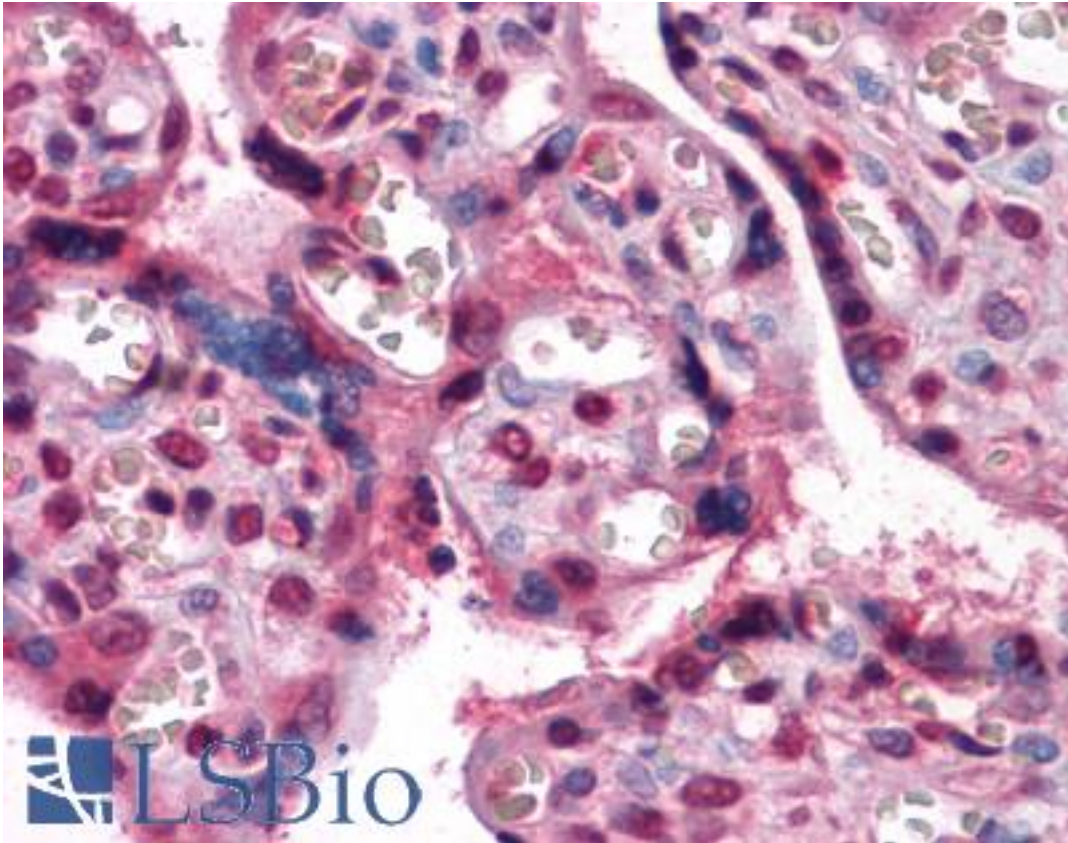


ZBTB7B / HcKrox Mouse anti-Human Monoclonal (7C12) Antibody - LS-B4136 - LSBio

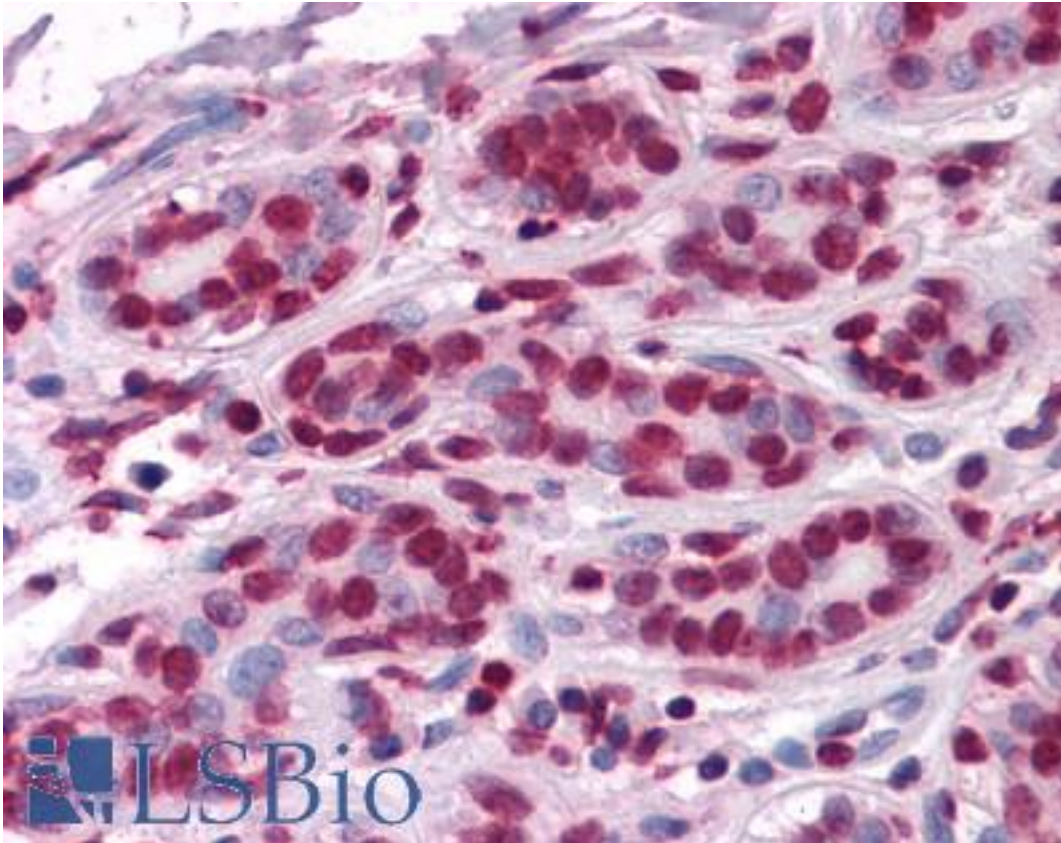
|                             |  |
|-----------------------------|--|
| <b>CatalogID:</b>           | LS-B4136   |
| <b>Validation:</b>          | This antibody replaces catalog number LS-C109127. It has been validated for use in the following assays: IHC-P.  |
| <b>Target:</b>              | zinc finger and BTB domain containing 7B (ZBTB7B)  |
| <b>Synonyms:</b>            | ZBTB7B Antibody, C-KROX Antibody, HcKROX Antibody, THPOK Antibody, ZFP-67 Antibody, Zinc finger protein 67 homolog Antibody, Zinc finger protein Th-POK Antibody, ZNF857B Antibody, Zinc finger protein 857B Antibody, ZFP67 Antibody, ZBTB15 Antibody |
| <b>Host</b>                 | ZBTB7B antibody was produced in Mouse  |
| <b>Clonality:</b>           | Monoclonal   |
| <b>Isotype:</b>             | IgG1   |
| <b>Clone Name:</b>          | 7C12   |
| <b>Immunogen Species:</b>   | ZBTB7B / HcKrox antibody was raised against Human  |
| <b>Immunogen:</b>           | ZBTB7B / HcKrox antibody was raised against purified recombinant fragment of human ZBTB7B expressed in E. coli.  |
| <b>Specificity:</b>         | Human ZBTB7B   |
| <b>Reactivity:</b>          | Human  |
| <b>Purification:</b>        | Ascites  |
| <b>Presentation:</b>        | Ascitic fluid, 0.03% sodium azide. Sourced in Ascites.   |
| <b>Recommended Storage:</b> | Long term: -20°C; Short term: +4°C. Avoid repeat freeze-thaw cycles.   |
| <b>Uses:</b>                | IHC - Paraffin (1:200), Immunofluorescence (1:200 - 1:1000), Western blot (1:500 - 1:2000), ELISA (Optimal dilution to be determined by the researcher)  |
| <b>Size:</b>                | 50 µl  |

**Immunohistochemistry Image:**



Anti-ZBTB7B antibody IHC of human placenta. Immunohistochemistry of formalin-fixed, paraffin-embedded tissue after heat-induced antigen retrieval. Antibody LS-B4136 dilution 1:200.

**Immunohistochemistry Image:**



Anti-ZBTB7B antibody IHC of human breast. Immunohistochemistry of formalin-fixed, paraffin-embedded tissue after heat-induced antigen retrieval. Antibody LS-B4136 dilution 1:200.

**Requested From:**

Japan

Laboratory Reagent For In Vitro Research Use Only

Not for resale without prior written consent from LifeSpan BioSciences, Inc.

Created on 9/23/2014

© 2014 LifeSpan BioSciences