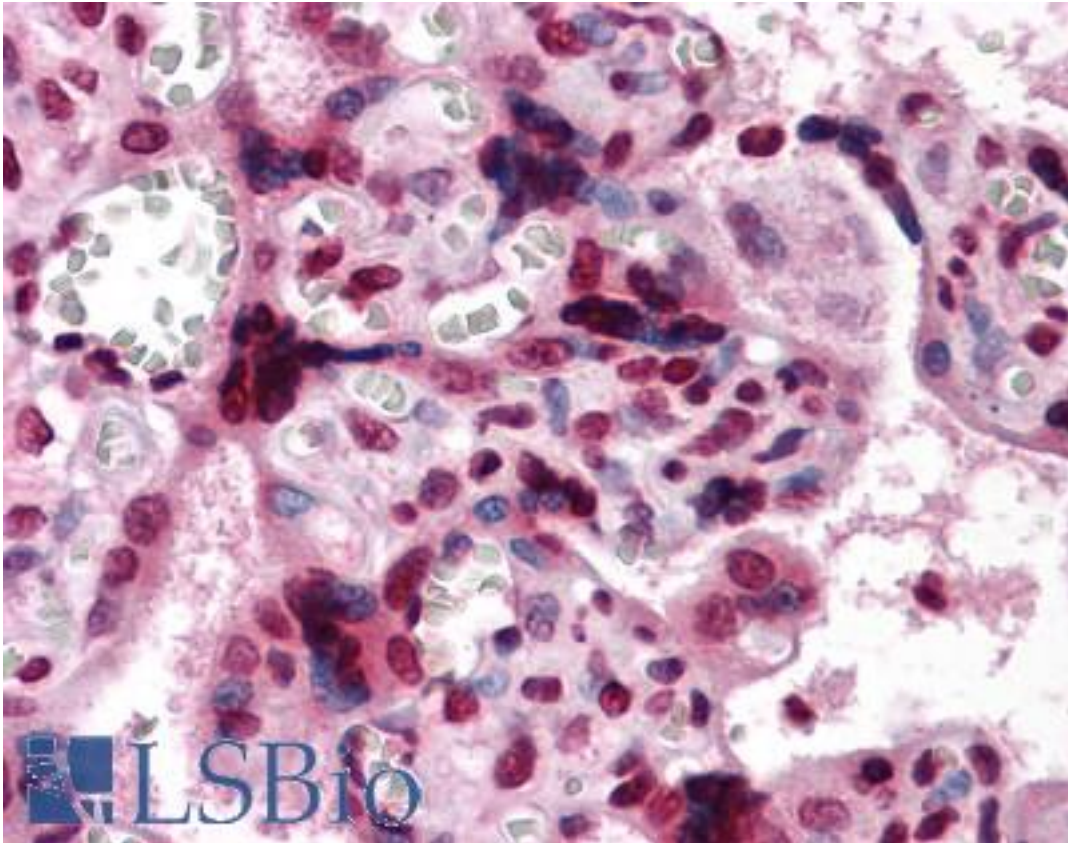


CSF1 / CSF-1 / MCSF Mouse anti-Human Monoclonal (2D10) Antibody - LS-B4135 - LSBio

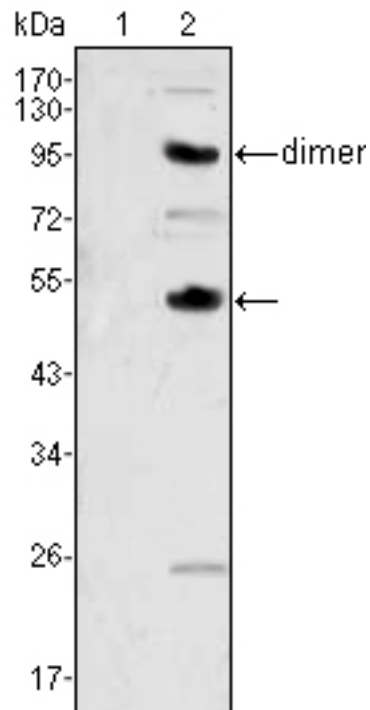
CatalogID:	LS-B4135
Validation:	This antibody replaces catalog number LS-C109089. It has been validated for use in the following assays: IHC-P.
Target:	colony stimulating factor 1 (macrophage) (CSF1)
Synonyms:	CSF1 Antibody, CSF-1 Antibody, MCSF Antibody, M-CSF Antibody, Lanimostim Antibody
Family / Subfamily:	Hormone / not assigned-Hormone
Host	CSF1 antibody was produced in Mouse
Clonality:	Monoclonal
Isotype:	IgG1
Clone Name:	2D10
Immunogen Species:	CSF1 / CSF-1 / MCSF antibody was raised against Human
Immunogen:	CSF1 / CSF-1 / MCSF antibody was raised against purified recombinant fragment of human CSF1 expressed in <i>E. coli</i> .
Specificity:	Human CSF1
Reactivity:	Human
Purification:	Ascites
Presentation:	Ascites fluid, 0.03% sodium azide
Recommended Storage:	Long term: -20°C; Short term: +4°C. Avoid repeat freeze-thaw cycles.
Uses:	IHC - Paraffin (1:200), Western blot (1:500 - 1:2000), ELISA (Optimal dilution to be determined by the researcher)
Size:	50 µl

Immunohistochemistry Image:



Anti-CSF1 / MCSF antibody IHC of human placenta. Immunohistochemistry of formalin-fixed, paraffin-embedded tissue after heat-induced antigen retrieval. Antibody LS-B4135 dilution 1:200.

Western Blot Image:



Western blot of CSF1 mouse mAb against human recombinant CSF2 (1) and CSF1 (2).

Requested From:

Japan

Laboratory Reagent For In Vitro Research Use Only

Not for resale without prior written consent from LifeSpan BioSciences, Inc.

Created on 9/23/2014

© 2014 LifeSpan BioSciences