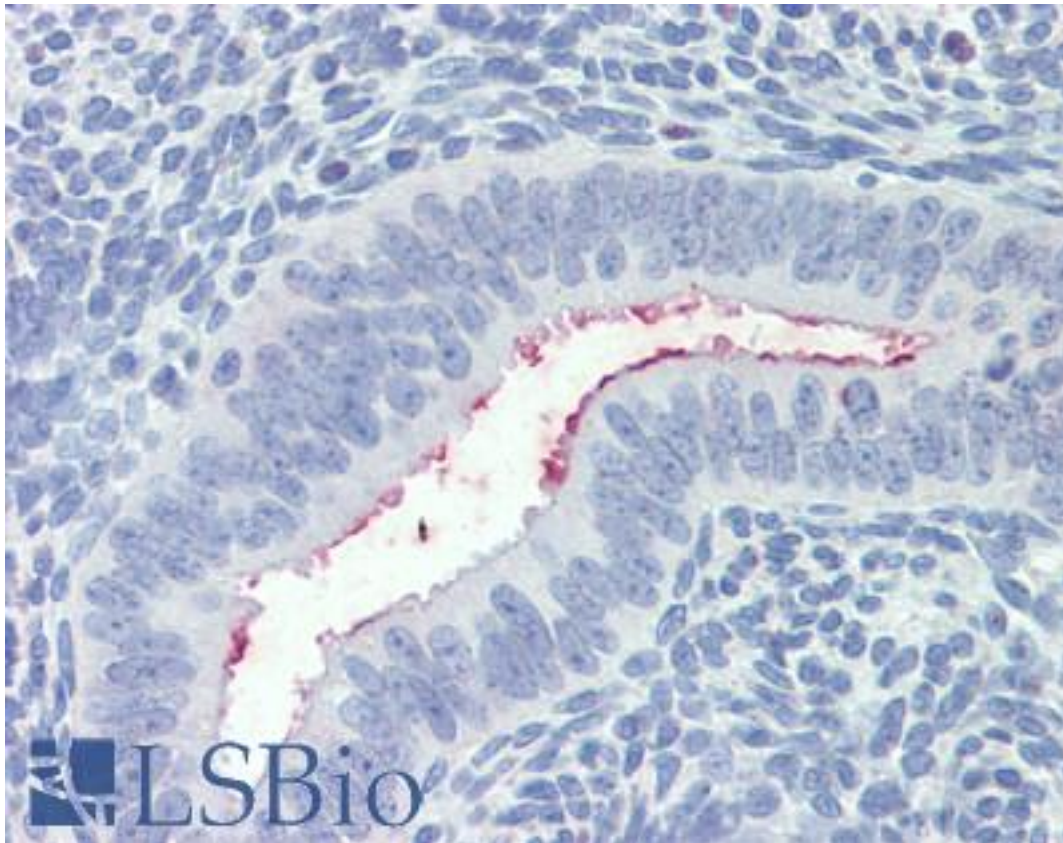


SFRP1 Goat anti-Human Polyclonal (C-Terminus) Antibody - LS-B4130 - LSBio

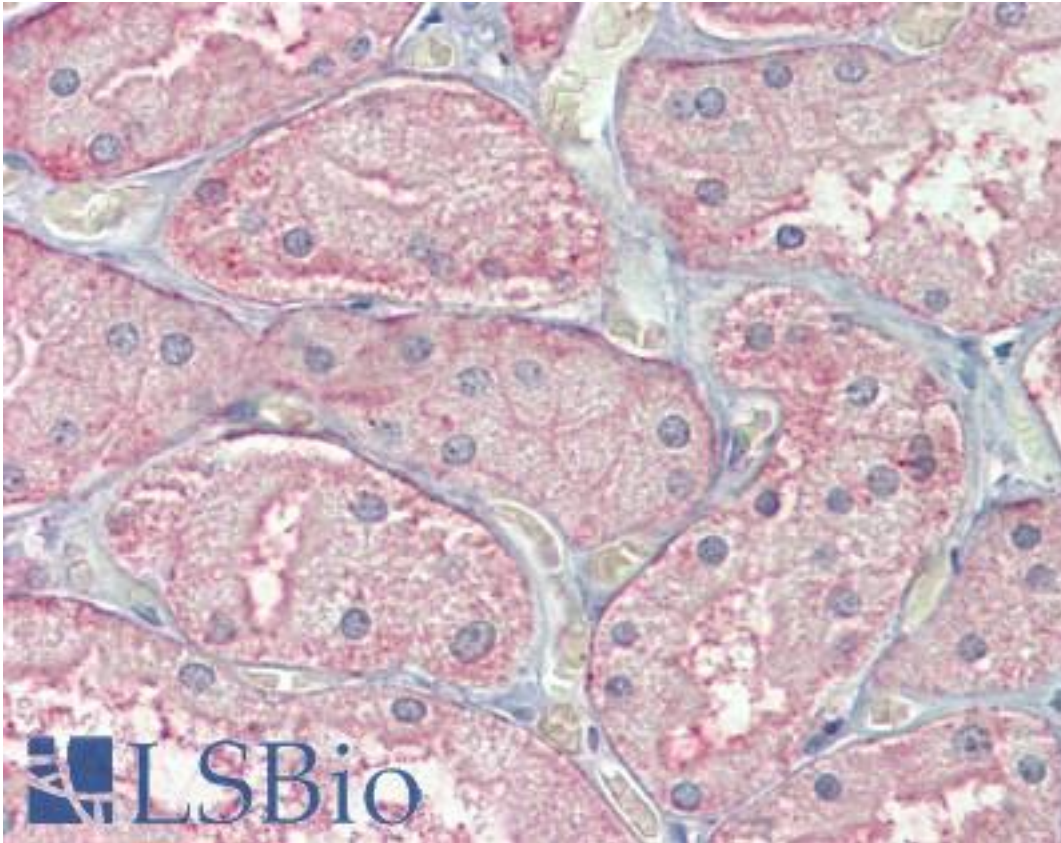
CatalogID:	LS-B4130
Validation:	This antibody replaces catalog number LS-C108311. It has been validated for use in the following assays: IHC-P.
Target:	secreted frizzled-related protein 1 (SFRP1)
Synonyms:	SFRP1 Antibody, FrzA Antibody, FRP Antibody, SARP-2 Antibody, SARP2 Antibody, SFRP-1 Antibody, FRP-1 Antibody, FRP1 Antibody
Host	SFRP1 antibody was produced in Goat
Clonality:	Polyclonal
Immunogen Species:	SFRP1 antibody was raised against Human
Antigen Type:	Synthetic peptide
Immunogen:	SFRP1 antibody was raised against synthetic peptide KNHECPTFQSVFK from the C-terminus of human SFRP1 (NP_003003.3). Percent identity by BLAST analysis: Human, Gorilla, Gibbon, Monkey, Marmoset, Mouse, Rat, Elephant, Panda, Bovine, Horse, Opossum (100%); Hamster (92%).
Specificity:	Human SFRP1.
Epitope:	C-Terminus
Reactivity:	Human, Gorilla, Gibbon, Monkey, Mouse, Rat, Bovine, Horse
Predicted Reactivity:	Hamster
Purification:	Immunoaffinity purified
Presentation:	Tris-buffered saline, pH 7.3, 0.5% BSA, 0.02% sodium azide
Recommended Storage:	Store at -20°C. Minimize freezing and thawing.
Usage Summary:	Immunohistochemistry: LS-B4130 was validated for use in immunohistochemistry on a panel of 21 formalin-fixed, paraffin-embedded (FFPE) human tissues after heat induced antigen retrieval in pH 6.0 citrate buffer. After incubation with the primary antibody, slides were incubated with biotinylated secondary antibody, followed by alkaline phosphatase-streptavidin and chromogen. The stained slides were evaluated by a pathologist to confirm staining specificity. The optimal working concentration for LS-B4130 was determined to be 3.75 ug/ml.
Uses:	IHC - Paraffin (3.75 µg/ml) (Optimal dilution to be determined by the researcher)
Size:	50 µg
Concentration:	0.5 mg/ml

Immunohistochemistry Image:



Anti-SFRP1 antibody IHC of human uterus. Immunohistochemistry of formalin-fixed, paraffin-embedded tissue after heat-induced antigen retrieval. Antibody LS-B4130 concentration 3.75 ug/ml.

Immunohistochemistry Image:



Anti-SFRP1 antibody IHC of human kidney. Immunohistochemistry of formalin-fixed, paraffin-embedded tissue after heat-induced antigen retrieval. Antibody LS-B4130 concentration 3.75 ug/ml.

Requested From:

Japan

Laboratory Reagent For In Vitro Research Use Only

Not for resale without prior written consent from LifeSpan BioSciences, Inc.

Created on 9/23/2014

© 2014 LifeSpan BioSciences