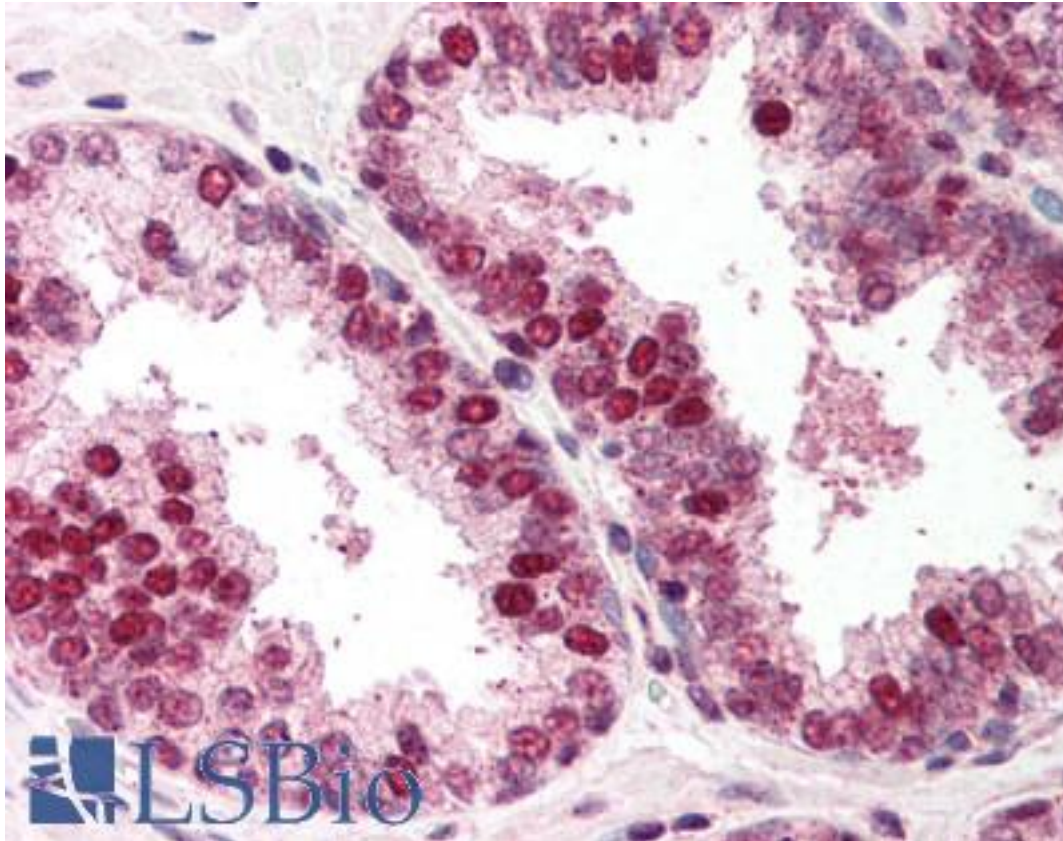


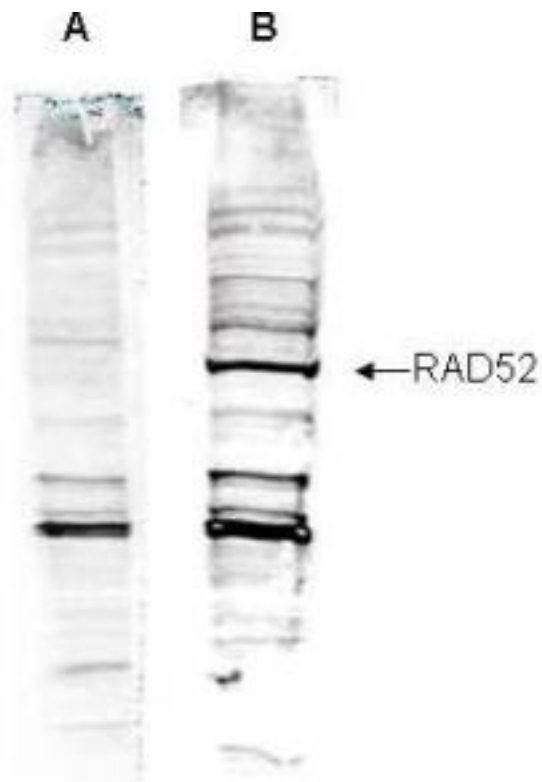
RAD52 Rabbit anti-Human Polyclonal (aa360-375) Antibody - LS-B413 - LSBio	
CatalogID:	LS-B413
Validation:	This antibody replaces catalog number LS-C18787. It has been validated for use in the following assays: IHC.
Target:	RAD52 homolog (<i>S. cerevisiae</i>)
Synonyms:	RAD52 Antibody, RAD52 (<i>S. cerevisiae</i>) homolog Antibody, RAD52 homolog (<i>S. cerevisiae</i>) Antibody, Recombination protein RAD52 Antibody
Host	RAD52 antibody was produced in Rabbit
Clonality:	Polyclonal
Immunogen Species:	RAD52 antibody was raised against Human
Antigen Type:	Synthetic peptide
Immunogen:	RAD52 antibody was raised against synthetic peptide from human RAD52.
Specificity:	aa 360 - 375 of the Human Rad 52 protein.
Epitope:	aa360-375
Reactivity:	Human
Purification:	Immunoaffinity purified
Presentation:	0.02 M potassium phosphate, 0.15 M sodium chloride, pH 7.2, 0.01% sodium azide.
Recommended Storage:	Store vial at -20 C prior to opening. Dilute only prior to immediate use. For extended storage aliquot contents and freeze at -20 C or below. Avoid cycles of freezing and thawing.
Usage Summary:	Immunohistochemistry: LS-B413 was validated for use in immunohistochemistry on a panel of 21 formalin-fixed, paraffin-embedded (FFPE) human tissues after heat induced antigen retrieval in pH 6.0 citrate buffer. After incubation with the primary antibody, slides were incubated with biotinylated secondary antibody, followed by alkaline phosphatase-streptavidin and chromogen. The stained slides were evaluated by a pathologist to confirm staining specificity. The optimal working concentration for LS-B413 was determined to be 2.5 ug/ml.
Uses:	IHC - Paraffin (2.5 µg/ml), Western blot (1:500 - 1:2000), ELISA (1:5000 - 1:20000) (Optimal dilution to be determined by the researcher)
Size:	50 µg
Concentration:	1 mg/ml

Immunohistochemistry Image:



Anti-RAD52 antibody IHC of human prostate. Immunohistochemistry of formalin-fixed, paraffin-embedded tissue after heat-induced antigen retrieval. Antibody LS-B413 concentration 5 ug/ml.

Western Blot Image:



Anti-Human RAD52 Antibody - Western Blot. Western blot analysis is shown using Affinity Purified anti-Human RAD52 antibody to detect Human RAD52 present in a HeLa nuclear extract (panel B). ~30 ug of lysate was loaded per lane for 4-20% gradient SDS-PAGE. Comparison to a molecular weight marker (not shown) indicates a band of ~63.0 kD is detected. Peptide competition (panel A) blocks the specific staining of this band. The blot was incubated with a 1:1000 dilution of the antibody at room temperature for 2 h followed by detection using IRDye800 labeled Goat-a-Rabbit IgG [H&L] (diluted 1:5000 for 45 min. IRDye800 fluorescence image was captured using the Odyssey Infrared Imaging System developed by.

Requested From:

Japan

Laboratory Reagent For In Vitro Research Use Only

Not for resale without prior written consent from LifeSpan BioSciences, Inc.

Created on 9/23/2014

© 2014 LifeSpan BioSciences