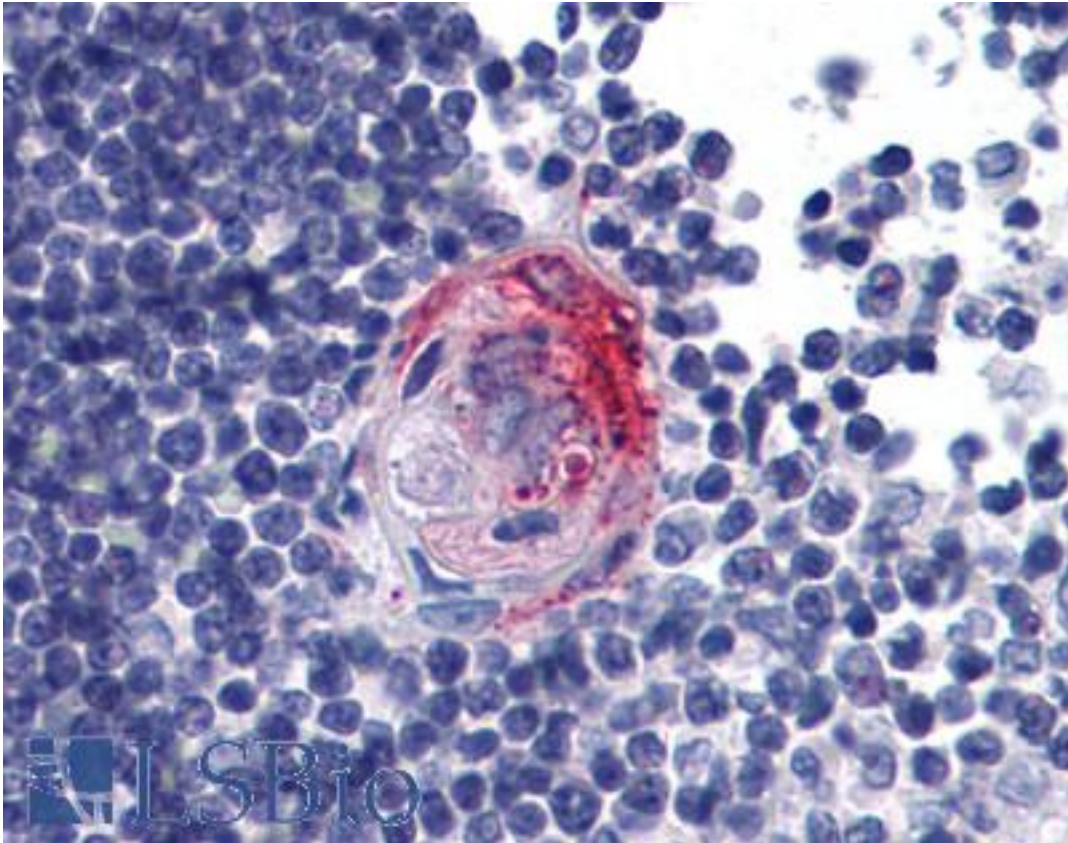


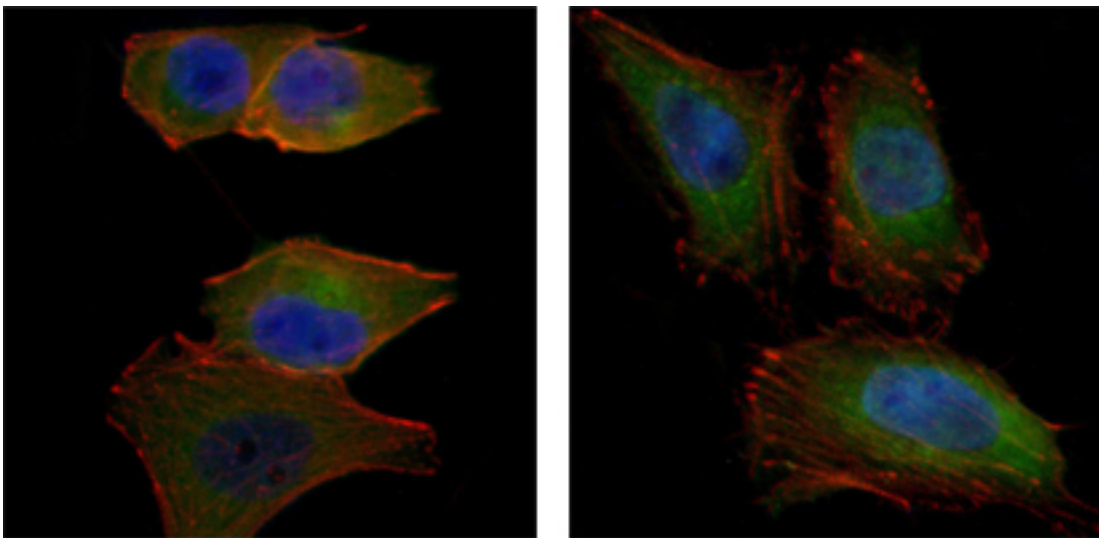
AKT2 Mouse anti-Human Monoclonal (1B6) Antibody - LS-B4129 - LSBio	
<b>CatalogID:</b>	LS-B4129
<b>Validation:</b>	This antibody replaces catalog number LS-C108763. It has been validated for use in the following assays: IHC-P.
<b>Target:</b>	v-akt murine thymoma viral oncogene homolog 2 (AKT2)
<b>Synonyms:</b>	AKT2 Antibody, PKB beta Antibody, PKBBETA Antibody, PRKBB Antibody, Protein kinase Akt-2 Antibody, Protein kinase B beta Antibody, RAC-PK-beta Antibody, Rac protein kinase beta Antibody, RAC-BETA Antibody, HIHGHH Antibody, PKBB Antibody
<b>Family / Subfamily:</b>	Protein Kinase / RAC/AKT
<b>Host</b>	AKT2 antibody was produced in Mouse
<b>Clonality:</b>	Monoclonal
<b>Isotype:</b>	IgG2b
<b>Clone Name:</b>	1B6
<b>Immunogen Species:</b>	AKT2 antibody was raised against Human
<b>Immunogen:</b>	AKT2 antibody was raised against purified recombinant fragment of human Akt2 expressed in E. coli.
<b>Specificity:</b>	Human AKT2
<b>Reactivity:</b>	Human, Monkey, Rat
<b>Purification:</b>	Ascites
<b>Presentation:</b>	Ascites fluid, 0.03% sodium azide
<b>Recommended Storage:</b>	Long term: -20°C; Short term: +4°C. Avoid repeat freeze-thaw cycles.
<b>Uses:</b>	IHC - Paraffin (1:100), Immunofluorescence (1:200 - 1:1000), Western blot (1:500 - 1:2000), ELISA (1:10000) (Optimal dilution to be determined by the researcher)
<b>Size:</b>	50 µl

**Immunohistochemistry Image:**



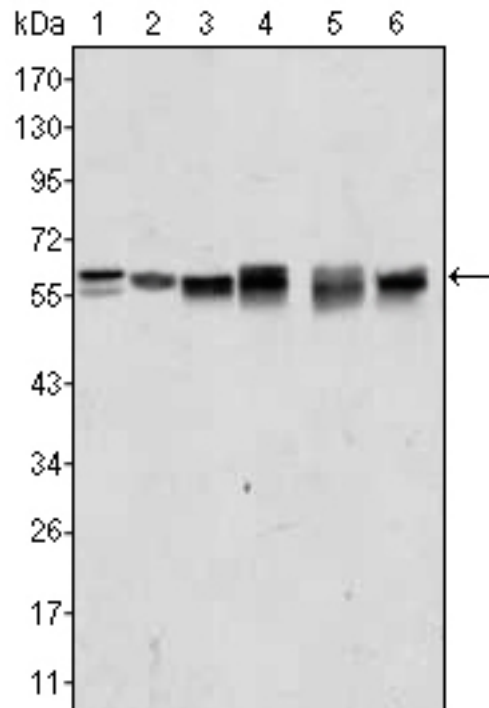
Anti-AKT2 antibody IHC of human thymus. Immunohistochemistry of formalin-fixed, paraffin-embedded tissue after heat-induced antigen retrieval. Antibody LS-B4129 dilution 1:100.

**Immunofluorescence Image:**



Immunofluorescence of PANC-1 (left) and HeLa (right) cells using AKT2 mouse mAb (green). Blue: DRAQ5 fluorescent DNA dye. Red: Actin filaments have been labeled with Alexa Fluor-555 phalloidin.

**Western Blot Image:**



Western blot of AKT2 mouse mAb against A431 (1), Jurkat (2), HEK293 (3), A549 (4), MCF-7 (5) and PC-12 (6) cell lysate.

**Requested From:**

Japan

Laboratory Reagent For In Vitro Research Use Only

Not for resale without prior written consent from LifeSpan BioSciences, Inc.

Created on 9/23/2014

© 2014 LifeSpan BioSciences