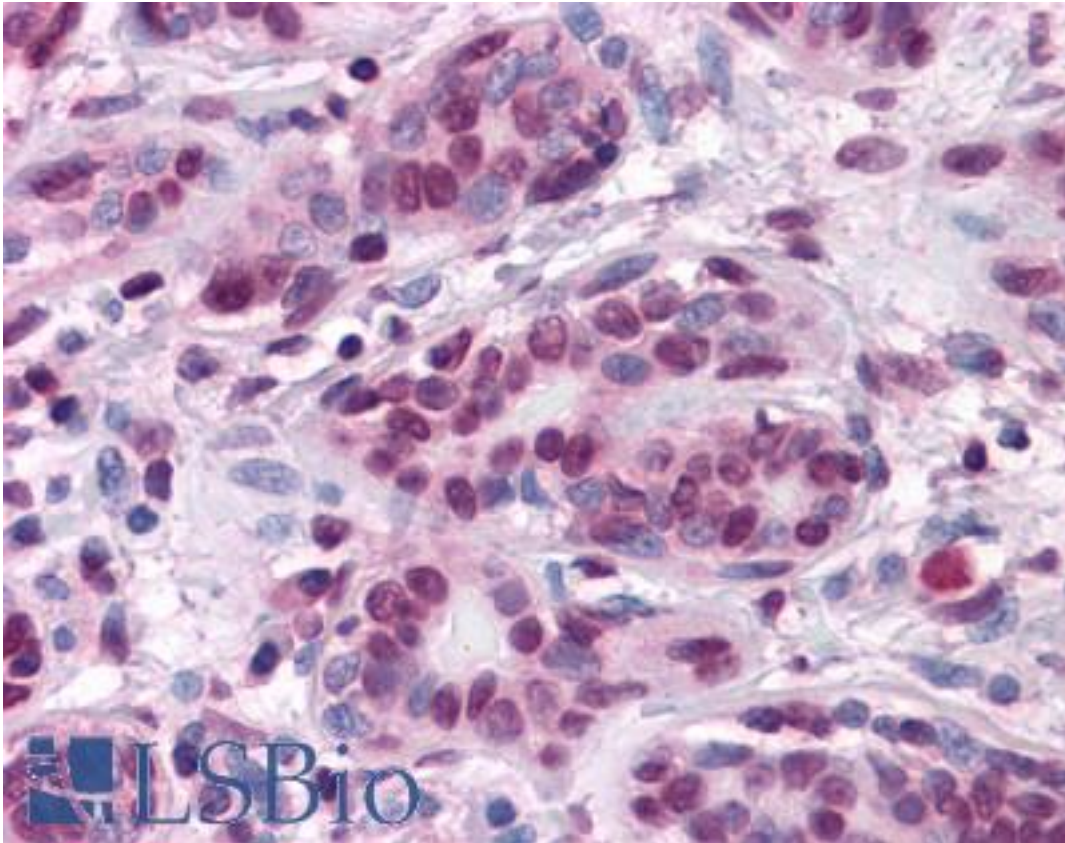


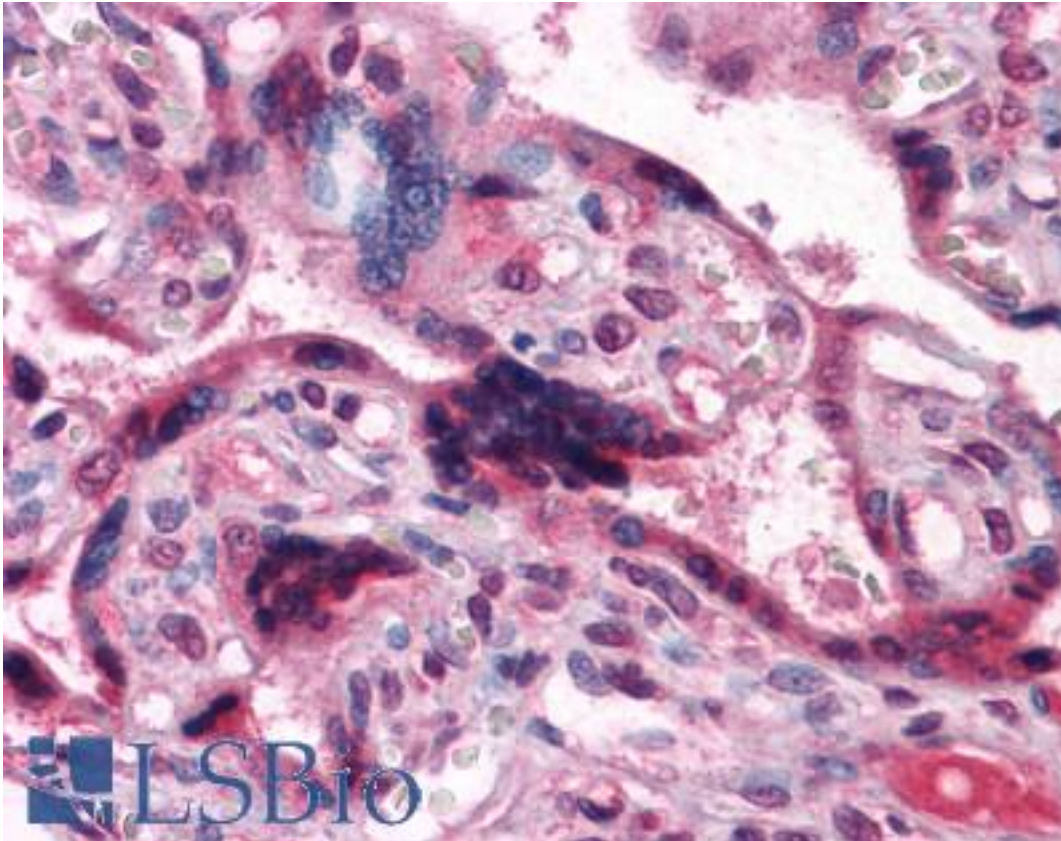
CTNNB1 / Beta Catenin Mouse anti-Human Monoclonal (4D5) Antibody - LS-B4123 - LSBio	
<b>CatalogID:</b>	LS-B4123
<b>Validation:</b>	This antibody replaces catalog number LS-C109090. It has been validated for use in the following assays: IHC-P.
<b>Target:</b>	catenin (cadherin-associated protein), beta 1, 88kDa (CTNNB1)
<b>Synonyms:</b>	CTNNB1 Antibody, Beta-catenin Antibody, Catenin beta-1 Antibody, CTNNB Antibody, Beta Catenin Antibody
<b>Family / Subfamily:</b>	Catenin / not assigned-Catenin
<b>Host</b>	CTNNB1 antibody was produced in Mouse
<b>Clonality:</b>	Monoclonal
<b>Isotype:</b>	IgG1
<b>Clone Name:</b>	4D5
<b>Immunogen Species:</b>	CTNNB1 / Beta Catenin antibody was raised against Human
<b>Immunogen:</b>	CTNNB1 / Beta Catenin antibody was raised against purified recombinant fragment of human CTNNB1 expressed in E. coli.
<b>Specificity:</b>	Human CTNNB1
<b>Reactivity:</b>	Human
<b>Purification:</b>	Ascites
<b>Presentation:</b>	Ascites fluid, 0.03% sodium azide
<b>Recommended Storage:</b>	Long term: -20°C; Short term: +4°C. Avoid repeat freeze-thaw cycles.
<b>Uses:</b>	IHC - Paraffin (1:200), Immunofluorescence (1:200 - 1:1000), Western blot (1:500 - 1:2000), Flow Cytometry (1:200 - 1:400), ELISA (Optimal dilution to be determined by the researcher)
<b>Size:</b>	50 µl

**Immunohistochemistry Image:**



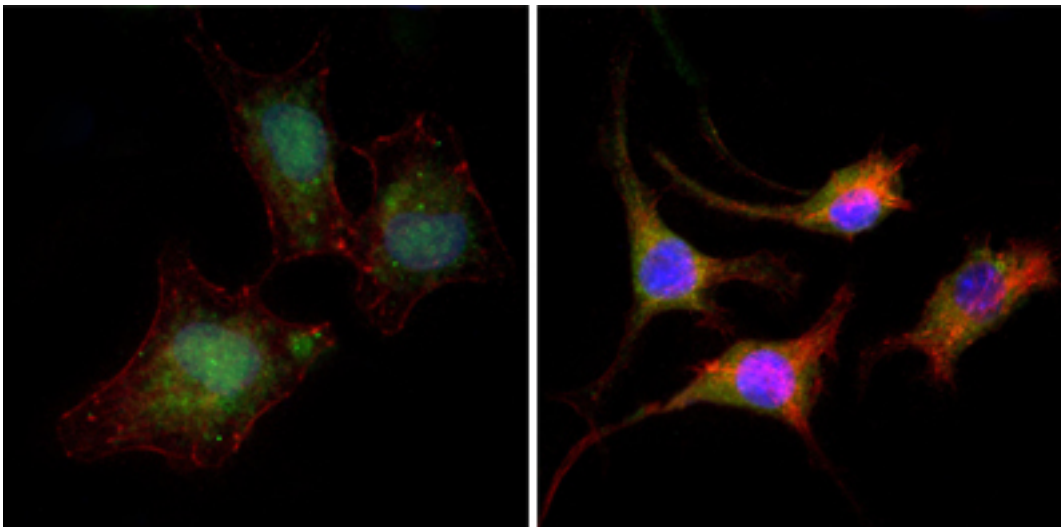
Anti-CTNNB1 / Beta Catenin antibody IHC of human breast. Immunohistochemistry of formalin-fixed, paraffin-embedded tissue after heat-induced antigen retrieval. Antibody LS-B4123 dilution 1:200.

**Immunohistochemistry Image:**



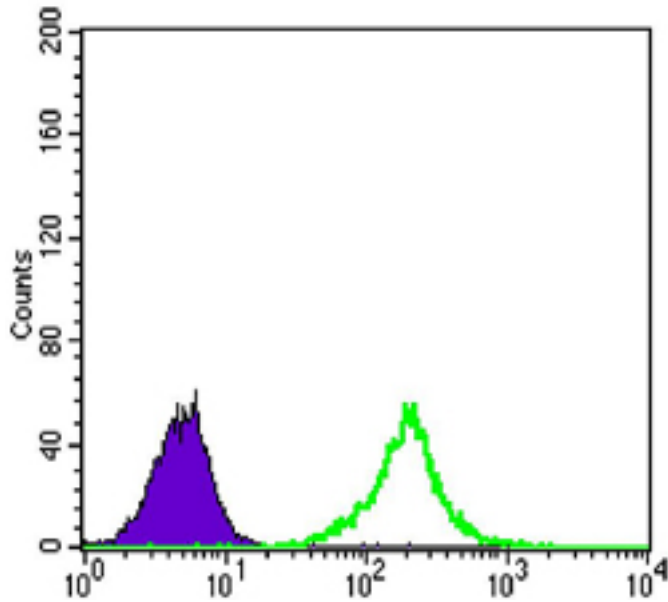
Anti-CTNNB1 / Beta Catenin antibody IHC of human placenta. Immunohistochemistry of formalin-fixed, paraffin-embedded tissue after heat-induced antigen retrieval. Antibody LS-B4123 dilution 1:200.

**Immunocytochemistry Image:**



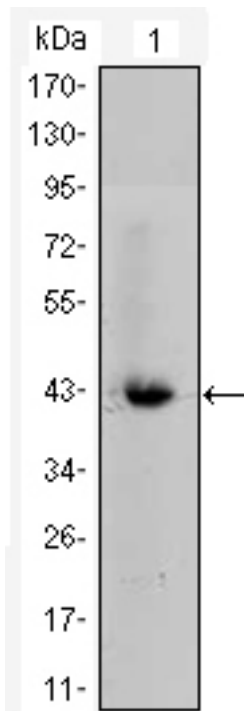
Immunofluorescence of A549 (left) and SK-BR-3 (right) cells using anti-CTNNB1 mAb (green). Red: Actin filaments have been labeled with DY-554 phalloidin. Blue: DRAQ5 fluorescent DNA dye.

**Flow Cytometry Image:**



Flow cytometry of A549 cells using anti-CTNNB1 mAb (green) and negative control (purple).

**Western Blot Image:**



Western blot of CTNNB1 mAb against CTNNB1-hlgGfC transfected HEK293 cell lysate.

**Requested From:**

Japan

Laboratory Reagent For In Vitro Research Use Only

Not for resale without prior written consent from LifeSpan BioSciences, Inc.

Created on 9/23/2014

© 2014 LifeSpan BioSciences