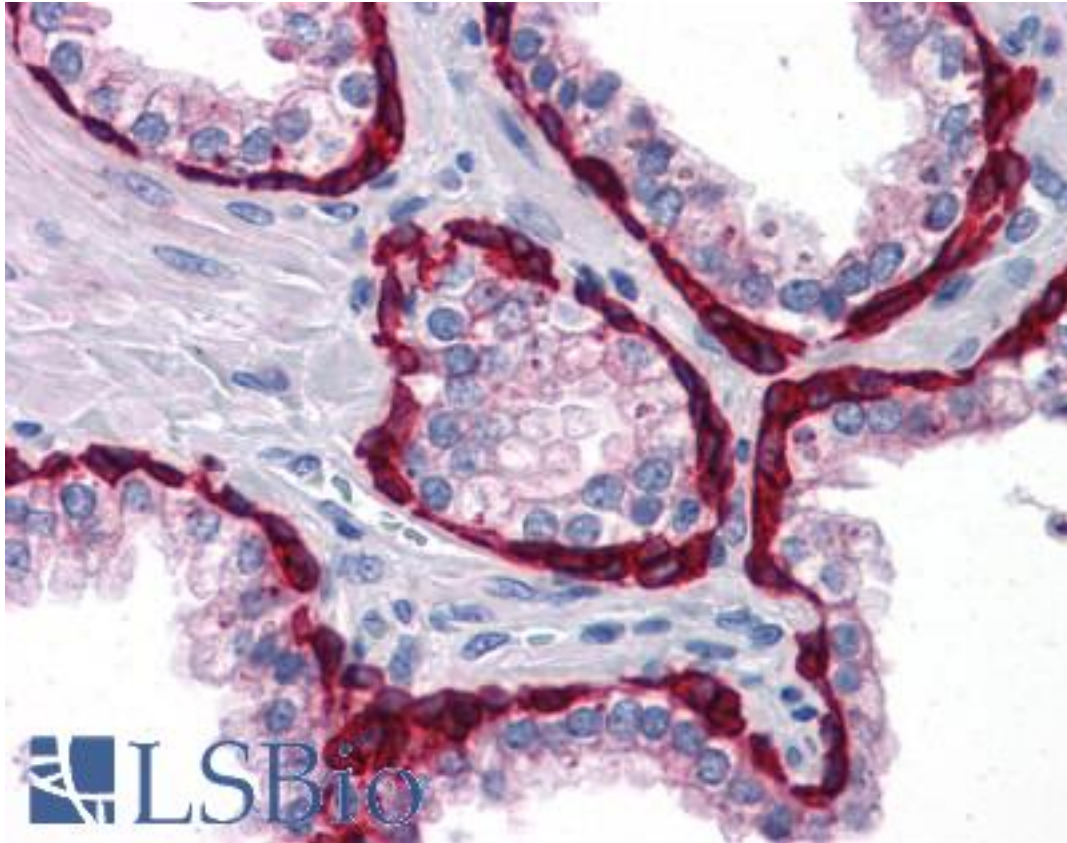


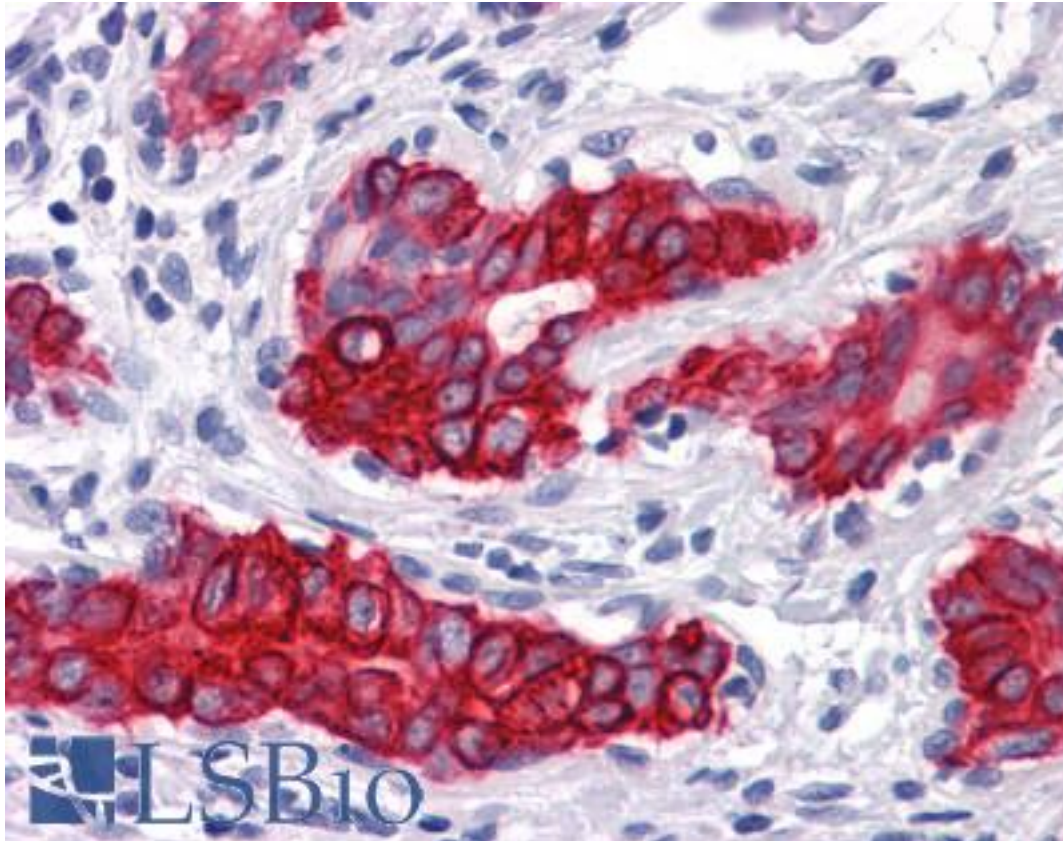
KRT15 / Cytokeratin 15 Mouse anti-Human Monoclonal (6E7) Antibody - LS-B4120 - LSBio	
CatalogID:	LS-B4120
Validation:	This antibody replaces catalog number LS-C108832. It has been validated for use in the following assays: IHC-P.
Target:	keratin 15 (KRT15)
Synonyms:	KRT15 Antibody, CK15 Antibody, Cytokeratin 15 Antibody, CK-15 Antibody, K1CO Antibody, Keratin 15 Antibody, K15 Antibody, Keratin-15, basic Antibody, KRTB Antibody, Cytokeratin-15 Antibody, Keratin-15 Antibody, Keratin-15, beta Antibody, Type I cytoskeletal 15 Antibody
Family / Subfamily:	Keratin / not assigned-Keratin
Host	KRT15 antibody was produced in Mouse
Clonality:	Monoclonal
Isotype:	IgG2a
Clone Name:	6E7
Immunogen Species:	KRT15 / Cytokeratin 15 antibody was raised against Human
Immunogen:	KRT15 / Cytokeratin 15 antibody was raised against purified recombinant fragment of KRT15 expressed in E. coli.
Specificity:	Human KRT15
Reactivity:	Human
Purification:	Ascites
Presentation:	Ascites fluid, 0.03% sodium azide
Recommended Storage:	Long term: -20°C; Short term: +4°C. Avoid repeat freeze-thaw cycles.
Uses:	IHC - Paraffin (1:200), Immunofluorescence (1:200 - 1:1000), Western blot (1:500 - 1:2000), Flow Cytometry (1:200 - 1:400), ELISA (1:10000) (Optimal dilution to be determined by the researcher)
Size:	50 µl

Immunohistochemistry Image:



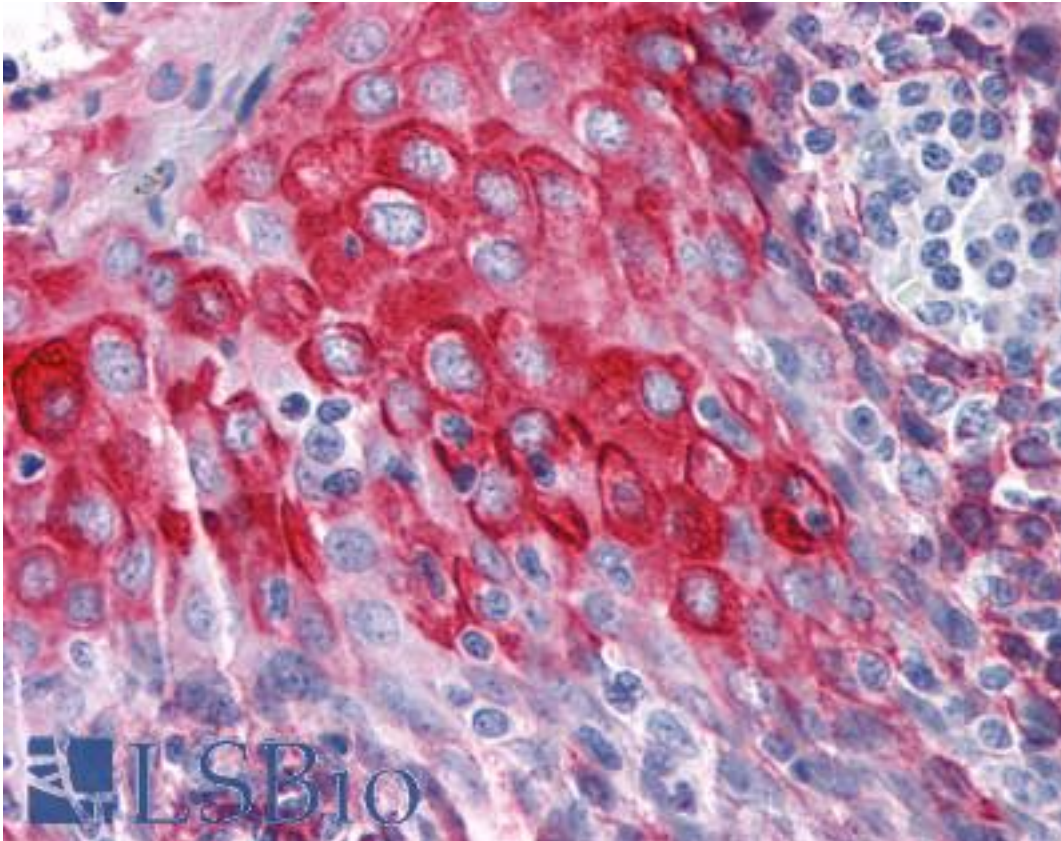
Anti-KRT15 / Cytokeratin 15 antibody IHC of human prostate. Immunohistochemistry of formalin-fixed, paraffin-embedded tissue after heat-induced antigen retrieval. Antibody LS-B4120 dilution 1:200.

Immunohistochemistry Image:



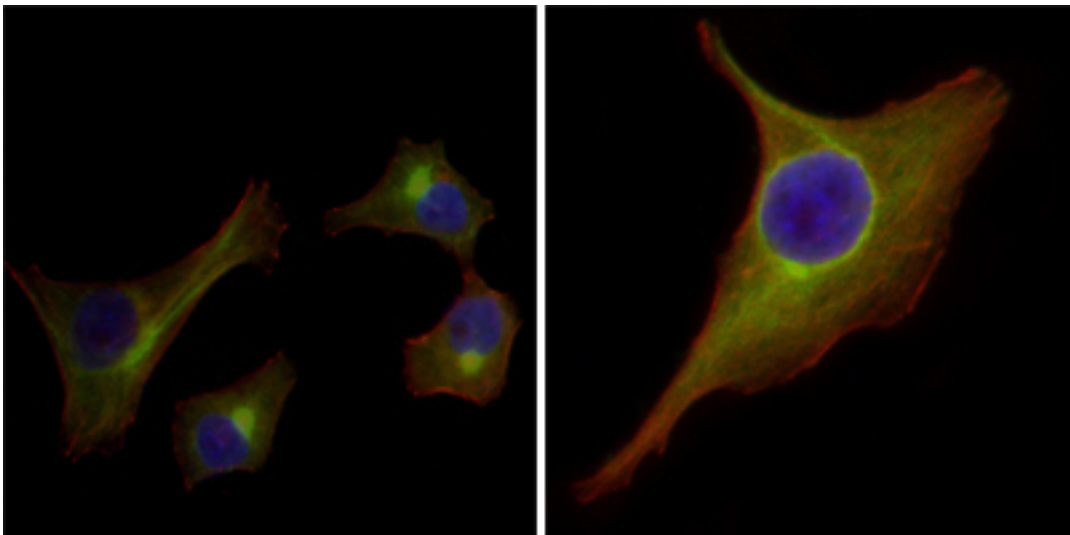
Anti-KRT15 / Cytokeratin 15 antibody IHC of human breast. Immunohistochemistry of formalin-fixed, paraffin-embedded tissue after heat-induced antigen retrieval. Antibody LS-B4120 dilution 1:200.

Immunohistochemistry Image:



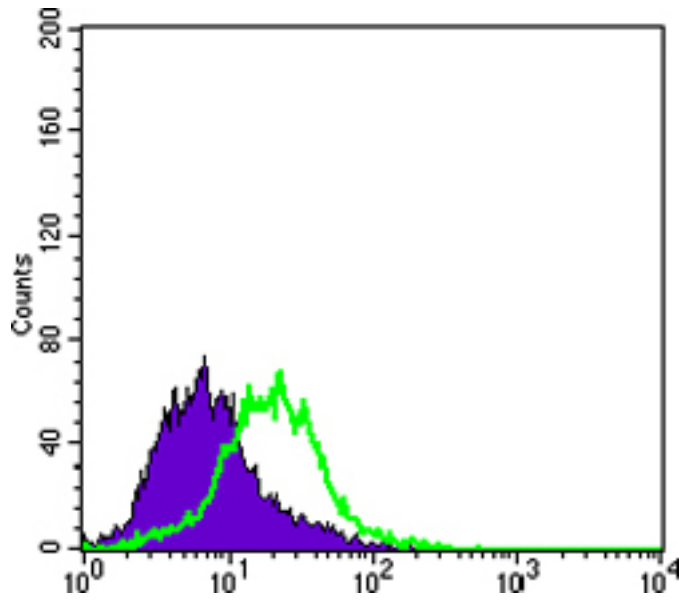
Anti-KRT15 / Cytokeratin 15 antibody IHC of human tonsil. Immunohistochemistry of formalin-fixed, paraffin-embedded tissue after heat-induced antigen retrieval. Antibody LS-B4120 dilution 1:200.

Immunocytochemistry Image:



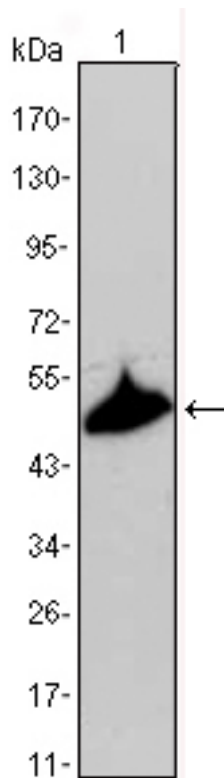
Immunofluorescence of HepG2(left) and PACN-1(right) cells using anti-KRT15 mAb (green). Red: Actin filaments have been labeled with DY-554 phalloidin. Blue: DRAQ5 fluorescent DNA dye.

Flow Cytometry Image:



Flow cytometry of PACN-1 cells using anti-KRT15 mAb (green) and negative control (purple).

Western Blot Image:



Western blot of anti-KRT15 mAb against A431 cell lysate.

Requested From:

Japan

Laboratory Reagent For In Vitro Research Use Only

Not for resale without prior written consent from LifeSpan BioSciences, Inc.

Created on 9/23/2014

© 2014 LifeSpan BioSciences