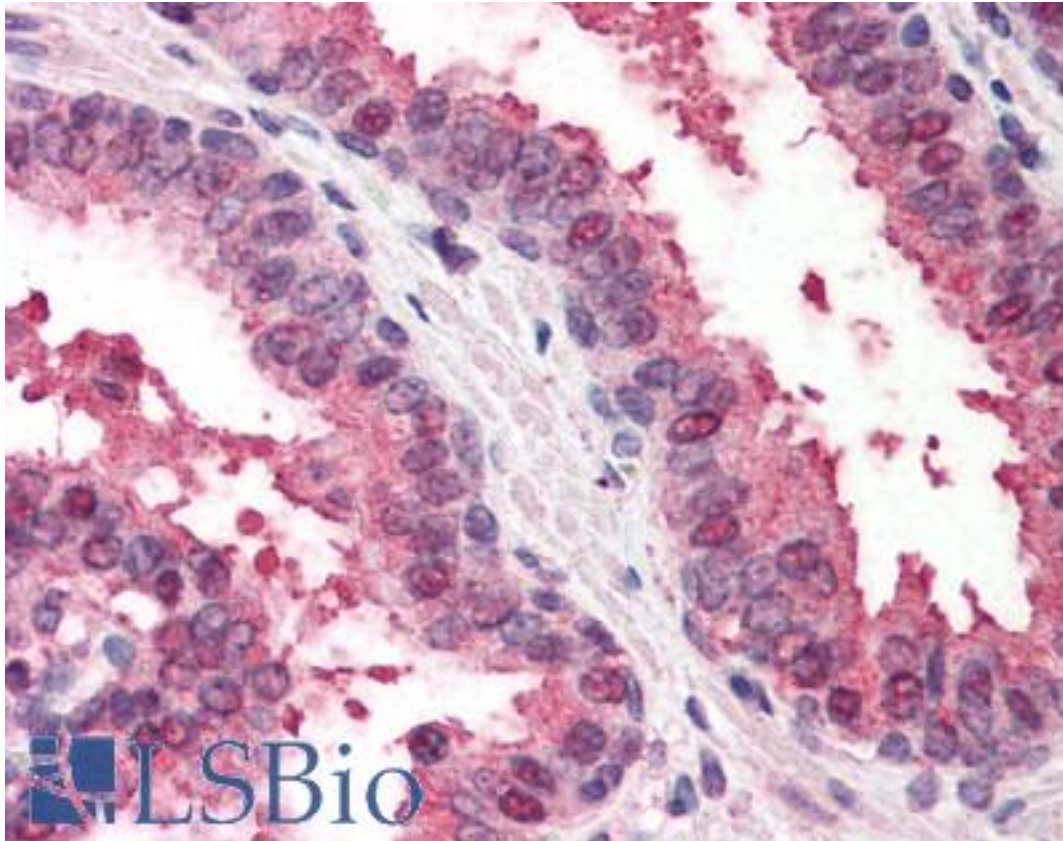


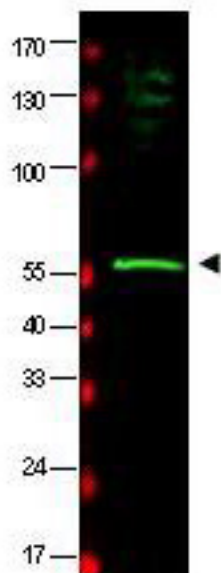
RAD23B / HR23B Goat anti-Human Polyclonal (aa163-176) Antibody - LS-B412 - LSBio	
CatalogID:	LS-B412
Validation:	This antibody replaces catalog number LS-C18916. It has been validated for use in the following assays: IHC.
Target:	RAD23 homolog B (<i>S. cerevisiae</i>) (RAD23B)
Synonyms:	RAD23B Antibody, HR23B Antibody, p58 Antibody, RAD23, yeast homolog of, B Antibody, HHR23B Antibody
Host	RAD23B antibody was produced in Goat
Clonality:	Polyclonal
Immunogen Species:	RAD23B / HR23B antibody was raised against Human
Antigen Type:	Synthetic peptide
Immunogen:	RAD23B / HR23B antibody was raised against synthetic peptide from human RAD23B.
Specificity:	aa 163-176 of human HR23B protein.
Epitope:	aa163-176
Reactivity:	Human
Purification:	Immunoaffinity purified
Presentation:	0.02 M potassium phosphate, 0.15 M sodium chloride, pH 7.2, 0.01% sodium azide.
Recommended Storage:	Long term: -20°C; Short term: +4°C. Avoid repeat freeze-thaw cycles.
Usage Summary:	Immunohistochemistry: LS-B412 was validated for use in immunohistochemistry on a panel of 21 formalin-fixed, paraffin-embedded (FFPE) human tissues after heat induced antigen retrieval in pH 6.0 citrate buffer. After incubation with the primary antibody, slides were incubated with biotinylated secondary antibody, followed by alkaline phosphatase-streptavidin and chromogen. The stained slides were evaluated by a pathologist to confirm staining specificity. The optimal working concentration for LS-B412 was determined to be 2.5 ug/ml.
Uses:	IHC - Paraffin (2.5 ug/ml), Immunofluorescence, Western blot (1:500 - 1:2000), ELISA (1:2000 - 1:10000) (Optimal dilution to be determined by the researcher)
Size:	50 ug
Concentration:	1 mg/ml

Immunohistochemistry Image:



Anti-RAD23B antibody IHC of human prostate. Immunohistochemistry of formalin-fixed, paraffin-embedded tissue after heat-induced antigen retrieval. Antibody LS-B412 concentration 5 ug/ml.

Western Blot Image:



Western blot of affinity purified anti-HR23B antibody shows detection of a band at ~58 kDa (arrowhead) corresponding to HR23B present in a HeLa whole cell lysate. Pre-incubation of antibody with immunizing peptide completely blocks reactivity (data not shown). Approximately 33 ug of lysate was separated by 4-20% Tris Glycine SDS-PAGE. After blocking the membrane was probed overnight at 4C with the primary antibody diluted to 1:500 in 5% BLOTTO in PBS. The membrane was washed and reacted with a 1:20000 dilution of IRDye800 conjugated Rb-a-Goat IgG [H&L] (605-432-013) for 45 min at room temperature (800 nm channel, green). Molecular weight estimation was made by comparison to prestained MW markers indicated at left (700 nm channel, red). IRDye800 fluorescence image was captured using the Odyssey Infrared Imaging System developed by LI-COR. IRDye is a trademark of LI-COR, Inc. Other detection systems will yield similar results.

Requested From:

Japan

Laboratory Reagent For In Vitro Research Use Only

Not for resale without prior written consent from LifeSpan BioSciences, Inc.

Created on 9/23/2014

© 2014 LifeSpan BioSciences