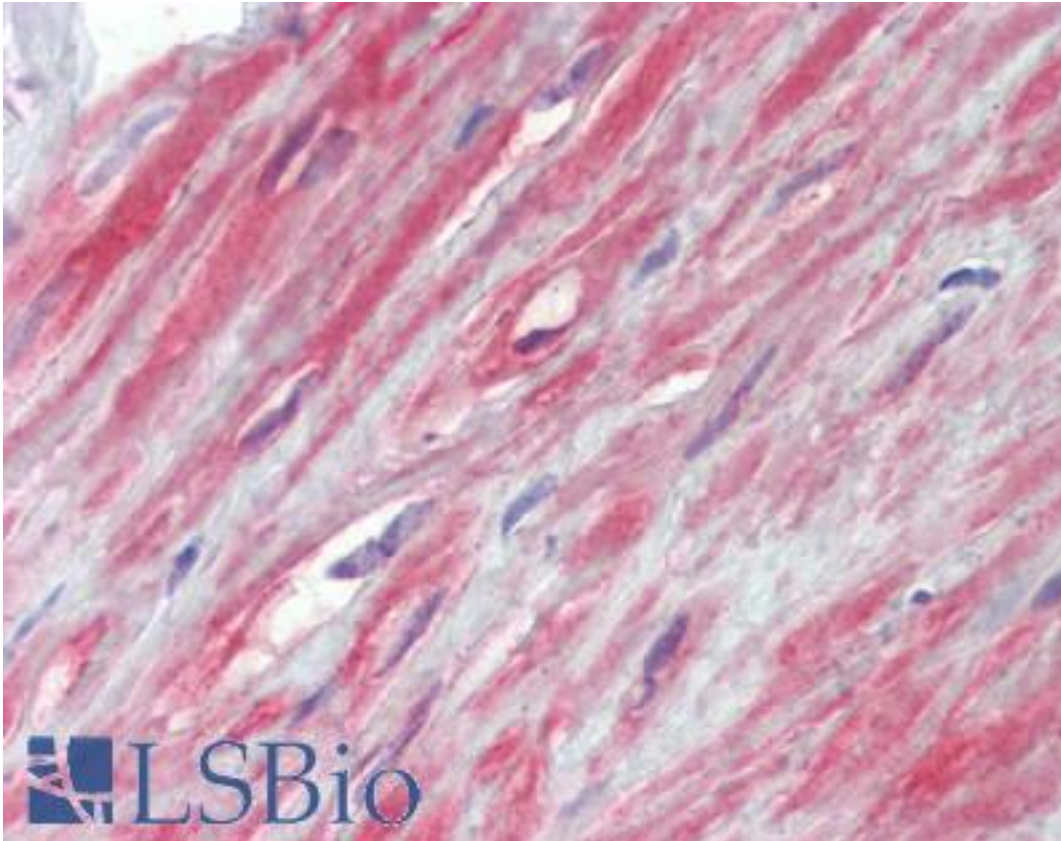


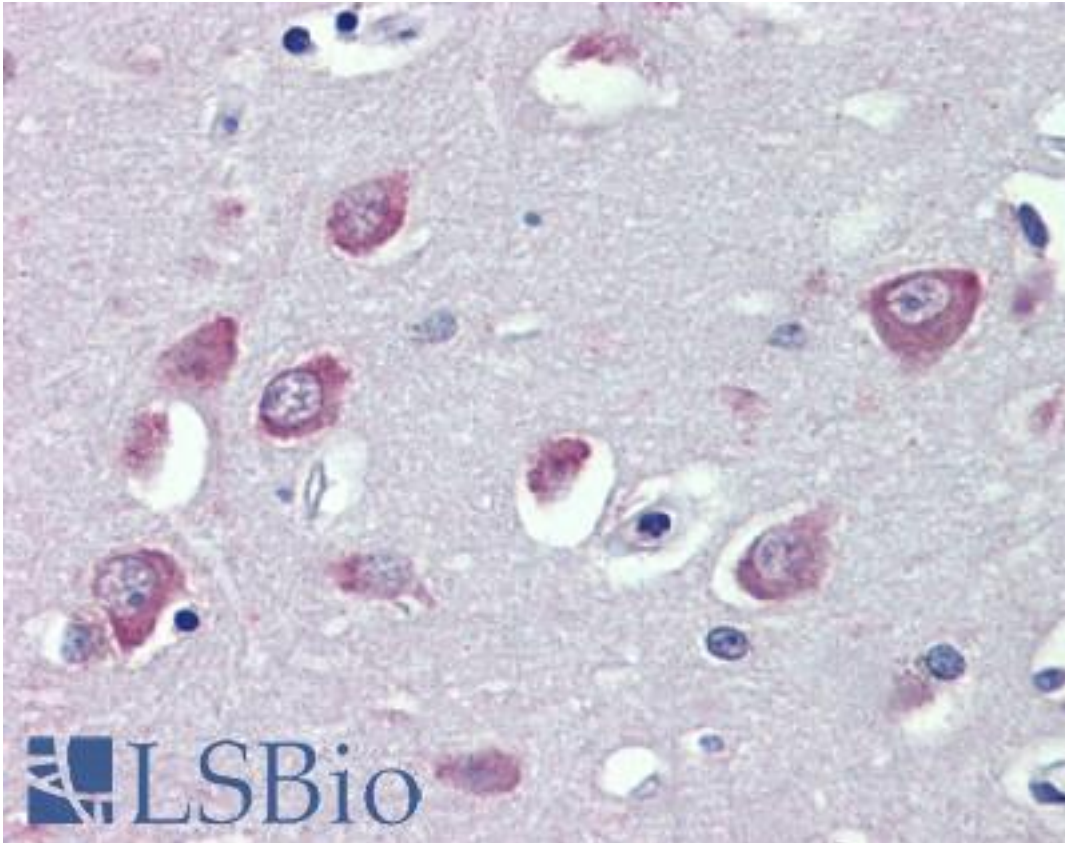
| TRPC1 Goat anti-Human Polyclonal (Internal) Antibody - LS-B4119 - LSBio | |
|---|--|
| CatalogID: | LS-B4119 |
| Validation: | This antibody replaces catalog number LS-C108297. It has been validated for use in the following assays: IHC-P. |
| Target: | transient receptor potential cation channel, subfamily C, member 1 (TRPC1) |
| Synonyms: | TRPC1 Antibody, HTRP-1 Antibody, TRP1 Antibody, TRP-1 Antibody, Trrp1 Antibody, Transient receptor protein 1 Antibody |
| Family / Subfamily: | Ion Channel / Calcium channel - TRP |
| Host | TRPC1 antibody was produced in Goat |
| Clonality: | Polyclonal |
| Immunogen Species: | TRPC1 antibody was raised against Human |
| Antigen Type: | Synthetic peptide |
| Immunogen: | TRPC1 antibody was raised against synthetic peptide NLKQKRDENYQK from internal region of human TRPC1 (NP_003295.1). Percent identity by BLAST analysis: Human, Gorilla, Gibbon, Monkey, Marmoset, Mouse, Rat, Elephant, Panda, Dog, Bovine, Horse, Rabbit, Pig, Opossum, Turkey, Chicken, Platypus, Lizard, Pufferfish (100%); Bat, Trout, Seabass, Stickleback, Zebrafish (92%); Xenopus (83%). |
| Specificity: | Human TRPC1. |
| Epitope: | Internal |
| Reactivity: | Human, Gorilla, Gibbon, Monkey, Mouse, Rat, Bovine, Dog, Horse, Pig, Rabbit, Chicken |
| Predicted Reactivity: | Bat, Zebrafish |
| Purification: | Immunoaffinity purified |
| Presentation: | Tris-buffered saline, pH 7.3, 0.5% BSA, 0.02% sodium azide |
| Recommended Storage: | Store at -20°C. Minimize freezing and thawing. |
| Usage Summary: | Immunohistochemistry: LS-B4119 was validated for use in immunohistochemistry on a panel of 21 formalin-fixed, paraffin-embedded (FFPE) human tissues after heat induced antigen retrieval in pH 6.0 citrate buffer. After incubation with the primary antibody, slides were incubated with biotinylated secondary antibody, followed by alkaline phosphatase-streptavidin and chromogen. The stained slides were evaluated by a pathologist to confirm staining specificity. The optimal working concentration for LS-B4119 was determined to be 3.75 µg/ml. |
| Uses: | IHC - Paraffin (3.75 µg/ml) (Optimal dilution to be determined by the researcher) |
| Size: | 50 µg |
| Concentration: | 0.5 mg/ml |

Immunohistochemistry Image:



Anti-TRPC1 antibody IHC of human prostate, fibromuscular stroma. Immunohistochemistry of formalin-fixed, paraffin-embedded tissue after heat-induced antigen retrieval. Antibody LS-B4119 concentration 3.75 ug/ml.

Immunohistochemistry Image:



Anti-TRPC1 antibody IHC of human brain, cortex. Immunohistochemistry of formalin-fixed, paraffin-embedded tissue after heat-induced antigen retrieval. Antibody LS-B4119 concentration 3.75 ug/ml.

Requested From:

Japan

Laboratory Reagent For In Vitro Research Use Only

Not for resale without prior written consent from LifeSpan BioSciences, Inc.

Created on 9/23/2014

© 2014 LifeSpan BioSciences