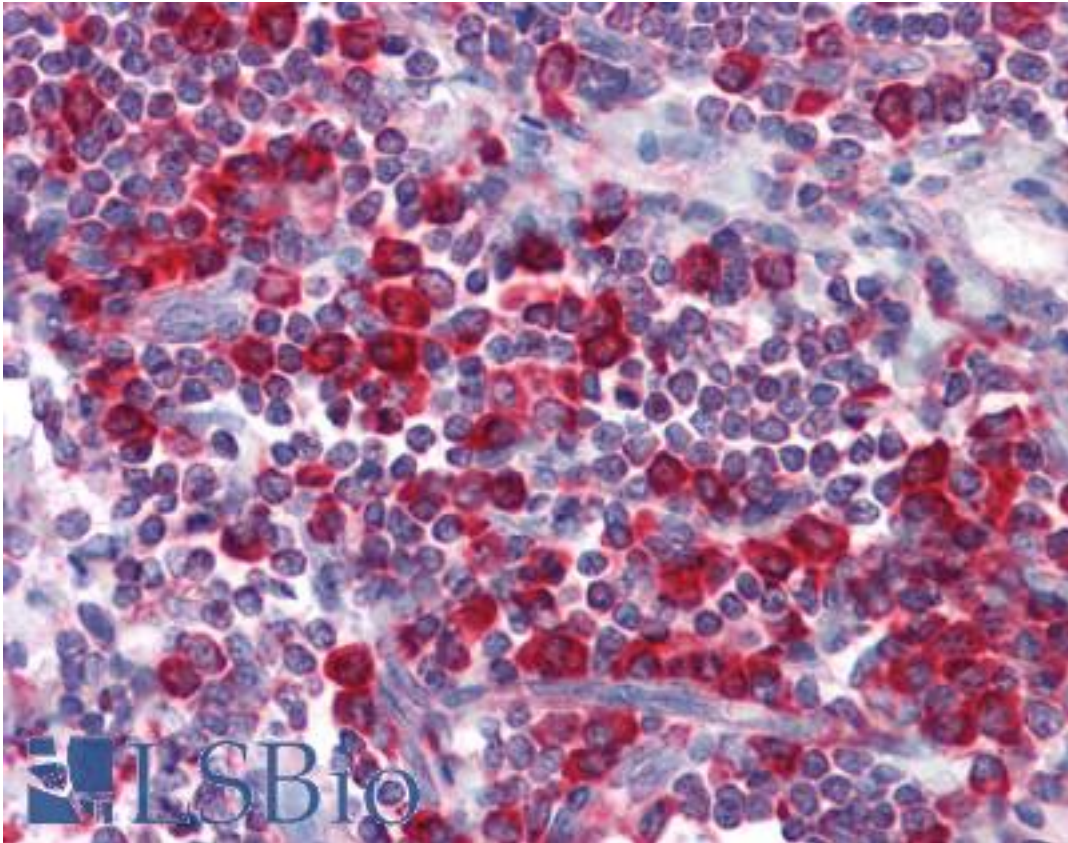


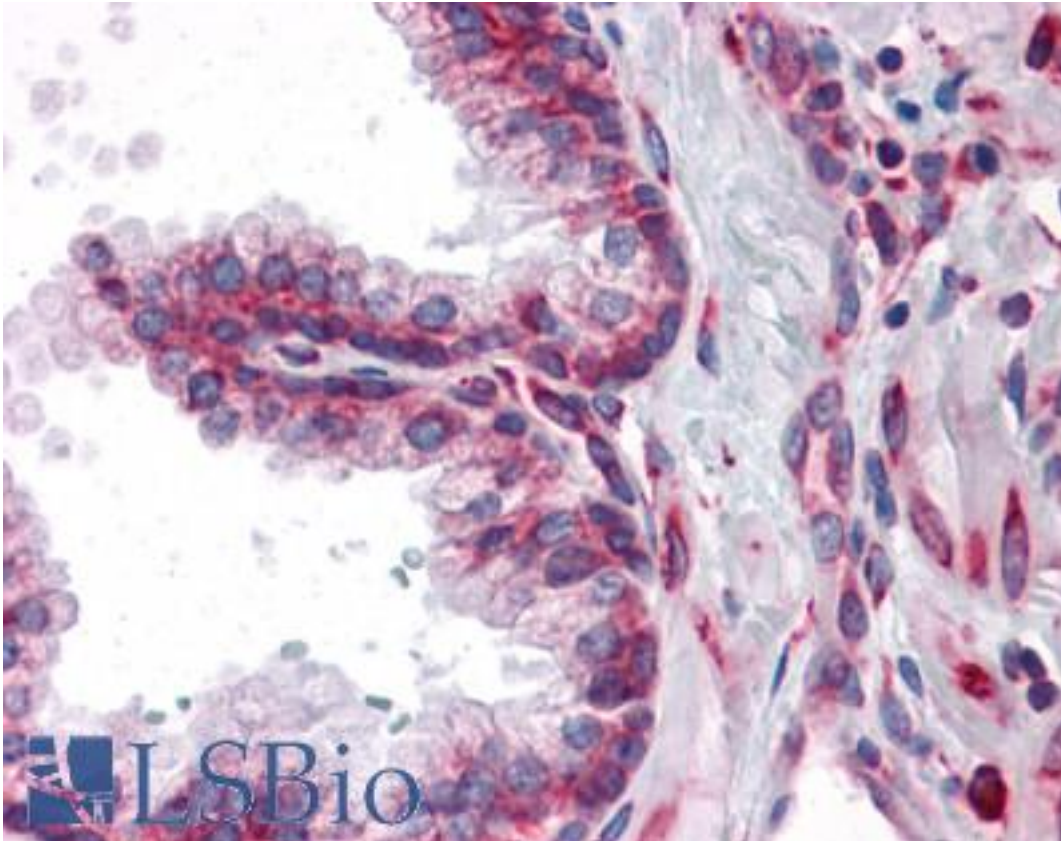
MTDH / Metadherin Mouse anti-Human Monoclonal (2F11C3) Antibody - LS-B4118 - LSBio	
CatalogID:	LS-B4118
Validation:	This antibody replaces catalog number LS-C108840. It has been validated for use in the following assays: IHC-P.
Target:	metadherin (MTDH)
Synonyms:	MTDH Antibody, 3D3 Antibody, AEG1 Antibody, AEG-1 Antibody, Metadherin Antibody, LYRIC Antibody, Metastasis adhesion protein Antibody, Protein LYRIC Antibody
Host	MTDH antibody was produced in Mouse
Clonality:	Monoclonal
Isotype:	IgG1
Clone Name:	2F11C3
Immunogen Species:	MTDH / Metadherin antibody was raised against Human
Immunogen:	MTDH / Metadherin antibody was raised against purified recombinant fragment of human MTDH expressed in E. coli.
Specificity:	Human MTDH
Reactivity:	Human
Purification:	Protein G purified
Presentation:	Liquid in PBS, 50% glycerol, 0.03% sodium azide
Recommended Storage:	Long term: -20°C; Short term: +4°C. Avoid repeat freeze-thaw cycles.
Uses:	IHC - Paraffin (1:200), Western blot (1:500 - 1:2000), Flow Cytometry (1:200 - 1:400), ELISA (1:10000) (Optimal dilution to be determined by the researcher)
Size:	50 µl

Immunohistochemistry Image:



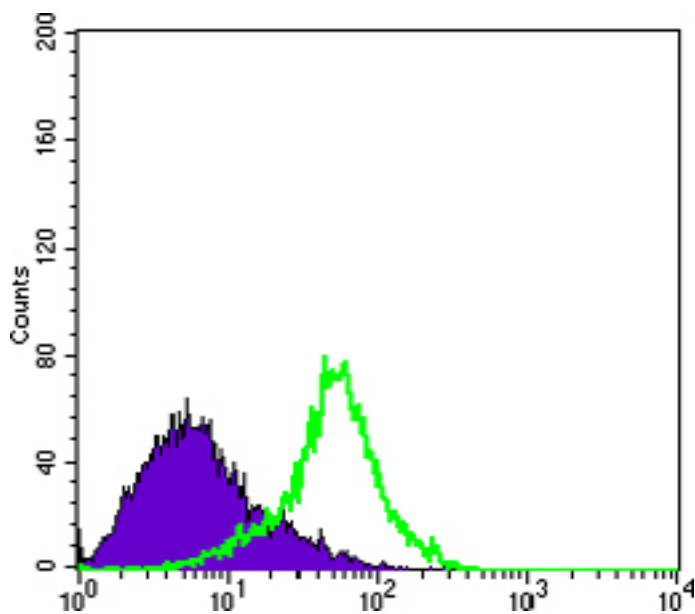
Anti-MTDH antibody IHC of human tonsil. Immunohistochemistry of formalin-fixed, paraffin-embedded tissue after heat-induced antigen retrieval. Antibody LS-B4118 dilution 1:200.

Immunohistochemistry Image:



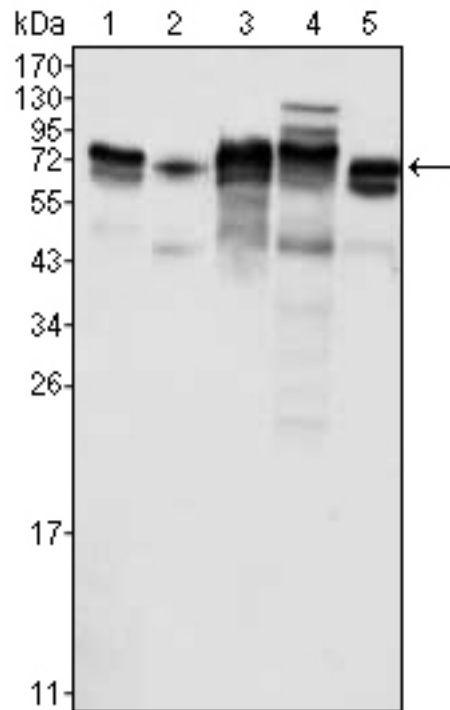
Anti-MTDH antibody IHC of human prostate. Immunohistochemistry of formalin-fixed, paraffin-embedded tissue after heat-induced antigen retrieval. Antibody LS-B4118 dilution 1:200.

Flow Cytometry Image:



Flow cytometry of HeLa cells using anti-Metadherin mAb (green) and negative control (purple).

Western Blot Image:



Western blot of anti-Metadherin mAb against K562 (1), SKBR-3 (2), T47D (3), HeLa (4) and MCF-7 (5) cell lysate.

Requested From:

Japan

Laboratory Reagent For In Vitro Research Use Only

Not for resale without prior written consent from LifeSpan BioSciences, Inc.

Created on 9/23/2014

© 2014 LifeSpan BioSciences